

DISTRICT DISASTER MANAGEMENT PLAN JHARGRAM - 2023



**Office of the District Magistrate
Jhargram**



FOREWORD

Disaster Management is a process or strategy that is implemented when any type of catastrophic event takes place. A truly comprehensive disaster management action plan will encompass a wide range of possibilities that can easily be adopted in the event of any disaster that sets off a chain reaction of other types of disasters in its wake.

Jhargram district in the past has experienced disasters like flood, drought, cyclone etc. In the year 2013 the district experienced of flood due to heavy rainfall in upper catchment areas and huge discharge from dams. We can minimize the suffering of the affected people by providing assistance to them in case of emergency. Preparation of **Disaster Management Plan-2023** is viewed as a part of preparedness with a view to take appropriate action to save human lives and properties in the face of disaster.

The **Disaster Management Action Plan-2023** is a co-ordinated effort of Disaster Management Section of Jhargram Collectorate and other line departments. These departments actively engage themselves during the period of disasters like flood, cyclone etc. The action plan and contingency plan of these departments have been incorporated in this Plan.

I hope that this plan will be immensely helpful to the Government officers of Jhargram and will be an important source of information and document in the event of disasters. This plan will also prove to be helpful in serving the purpose of saving affected people and mitigating their sufferings with the efforts and dedication of all the persons associated with Disaster Management.

I would like to my sincere thanks to all the officers and staffs of Jhargram who have worked in the background liaison among different departments arranging for meetings and also to providing statistics and information.

However, inspite of these threats and weakness the people know that they will have to face with the disaster and they have the will force and unchanging determination to combact any disaster side by side with the administration and that is our main strength.We belive that it will fulfill its objectives of acting as a ready reconer and best documents for managing disasters.

**District Magistrate
Jhargram**

CONTENTS

1. District Profile
2. Risk Assessment & Rescue Plan
 - 2.1. Flood Risk in Jhargam
 - 2.2. Earthquake Prone Zone: West Bengal
 - 2.3. Drought Risk in Jhargram
 - 2.4. Cyclone Risk in Jhargram
 - 2.5. Standard Risk Assessment of Disasters
3. Rehabilitation and Reconstruction Plan
 - 3.1. Post Disaster Reconstruction and Rehabilitation
 - 3.2. Administrative Relief
 - 3.3. Reconstruction of House Damaged / Destroyed
 - 3.4. Reconstruction of House Damaged / Destroyed
 - 3.5. Medical Care:
 - 3.6. Epidemics:
 - 3.7. Corps Disposal
 - 3.8. Salvage
 - 3.9. Managing external Assistance
 - 3.10. Special Relief
 - 3.11. Information
 - 3.12. Social Rehabilitation
4. DDMP
 - 4.1 Introduction
 - 4.2 Changing Context of Disaster Management and Enactment of DM Act in India and West Bengal
 - 4.3 Aims and Objectives of the DDMP
 - 4.4. Disaster Management: Functional Structure in the District
 - 4.5. District Disaster Management Authority
 - 4.6. The role of District Disaster Management Authority
 - 4.7. Authority for DDMP
 - 4.8 Evolution of DDMP
 - 4.9 Nodal ministries related to various categories of disasters
 - 4.10. District Crisis Management Group
5. Standard Operating Procedure for Jhargram District Administration
 - 5.1. Some valuable information and disaster specific action plan / standard operating procedure for Jhargram district administration
6. Preventive and Preparatory Measures of Irrigation & Waterways Directorate West Midnapore Division
7. Disaster Mitigation plan of Food & Supplies Department
8. Disaster Mitigation Plan of Superintendent of Police, Jhargram
9. Disaster Mitigation Plan of F.P.I & Horticulture Department
10. Disaster Mitigation Plan of Flood Management & Planning Division, (I & W Dte.)
11. Disaster Mitigation Plan of ARD Deptt. Control Room Status In Face Of Natural Calamity at Dist
12. Preventive and Preparatory Measures of Fisheries Department
13. Disaster Mitigation Plan of Agri-Mechanical Division
14. Disaster Mitigation Plan of Agri-Irrigation
15. Disaster Mitigation Plan of Fire Brigade, Jhargram
16. Disaster Mitigation Plan of Agriculture Department

17. Description of the Block in Jhargram District
 - 17.1. Jhargram Block
 - 17.2. SankrailBlock
 - 17.3. Gopiballavpur-I Block
 - 17.4. Gopiballavpur-II Block
 - 17.5. Nayagram Block
 - 17.6. Binpur-II Development Block
 - 17.7. Jamboni Block
 - 17.8. Binpur I Block
18. Block Wise Multipurpose Flood / Cyclone Shelter under Jhargram District
19. List of Places suitable for Landing of Helicopter
20. List of Places Suitable for Air Dropping of Relief Materials
21. Relief Godown under Jhargram District
22. List of Camping Sites in Jhargram District
23. Conatcts of Important Officials of Jhargram District
24. Sop for Railway Accident (Related Datas of South Eastern Railway, Jhargram)
25. Melas inthe District Where Large Crowds Gather with Date & Location
26. List of Acronyms

MAP OF JHARGRAM



1. DISTRICT PROFILE

District Name	Jhargram		Thalacemiya Determination Centre	01
Geographical Area	3037.64 Sq km		CT Scan	01
Population (Census 2011)	1137163		Dialysis Unit	01
Population Density	374/ Sq km		Fair Medicine Price Shop	01
No. Of Family	254600		Other Special Service	
Male	575085(50.57%)		N.R.C	05
Female	562078(49.43%)		S.N.C.U	08
Sex ratio	977		Blood Bank	03
SC	228873(20.13%)		I.C.T.C	01
ST	333405(29.32%)		Tele Ophthalmology Centre	08
No of Villages	2995(79)		R.K.S	09
No of Blocks	8		R.S.B.Y	09
No of Municipality	1		Ambulance	
No of Police Stations	10		Mobile Medical	08
Birth Rate	16		Education	
Death Rate	7		Govt. Aid Primary School	1246
Literacy Rate(2011)	70.92%		Upper Primary	143
Male (Literacy Rate)	80.00%		Junior High School (New Setup)	71
Female (Literacy Rate)	61.66%		Madhyamik Siskha Kendra (MSK)	64
Health & Family Welfare	No.	Bed	Sisu Siskha Kendra (SSK)	629
District Hospital	01	900	Child Development project	08
Super speciality Hospital	03	900	ICDS Centre	2418
Rural Hospital	08	370	College	10
Primary Health Centre (With Bed)	36	100	Technical Institution	08
Primary Health Centre (Without Bed)	15			
Sub- Centre	219			
CCU/ HDU		01		

2. Risk Assessment & Rescue Plan

2.1 Flood Risk in Jhargam

The list of affected blocks and municipalities is as follows:

Name of the Sub-Division	Vulnerable Blocks / Municipality	Partly affected Blocks / Municipality	Water logging Blocks / Municipality
Jhargam	1. Sankrail	1. Binpur-II	1. Jhargam Municipality
	2. Nayagram	2. Jhargam	
	3. Gopiballavpur-I	3. Jamboni	
	4. Gopiballavpur-II		
	5. Binpur-I		

2.2 Earthquake Prone Zone: West Bengal

Bureau of Indian Standards, based on the past seismic history, grouped the country into four seismic zones, viz. Zone-II, -III, -IV and -V. Of these, Zone V is the most seismically active region, while zone II is the least. The Modified Mercalli (MM) intensity, which measures the impact of the earthquakes on the surface of the earth, broadly associated with various zones, is as follows:

Seismic Zone Intensity on MM scale

II (Low intensity zone)

III (Moderate intensity zone)

IV (Severe intensity zone)

V (Very severe intensity zone)

Table 1 Earthquake Zonation of District of West Bengal

Sl. No.	District	Zone II	Zone III	Zone IV	Zone V
1	Alipurduar				
2	Jalpaiguri				
3	Darjeeling				
4	Kalimpong				
5	Coochbehar				
6	Uttar Dinajpur				
7	Dakshin Dinajpur				
8	Murshidabad				
9	Maldah				
10	Nadia				
11	Purba Burdwan				
12	Paschim Burdwan				
13	North 24 Parganas				
14	South 24 Parganas				
15	Purulia				
16	Birbhum				
17	Bankura				
18	Jhargam	Zone II			
19	Purba Medinipur				
20	Jhargam				
21	Kolkata				
22	Howrah				
23	Hoogly				

2.3 Drought Risk in Jhargram:

Drought has been described as a “creeping disaster” in the United Nations Publications. Thus emphasizing that a situation of drought develops gradually given sufficient warning of its coverage extents and intensity unlike a flood, cyclone or earthquake which offers little or no time and little opportunity for immediate planning and preparedness.

One of the essential preparatory measures is to keep a close watch on the behaviors of Monsoon and to initiate advance action to remove or minimize the unfavourable impact of weather conditions.

2.4 Cyclone Risk in Jhargram:

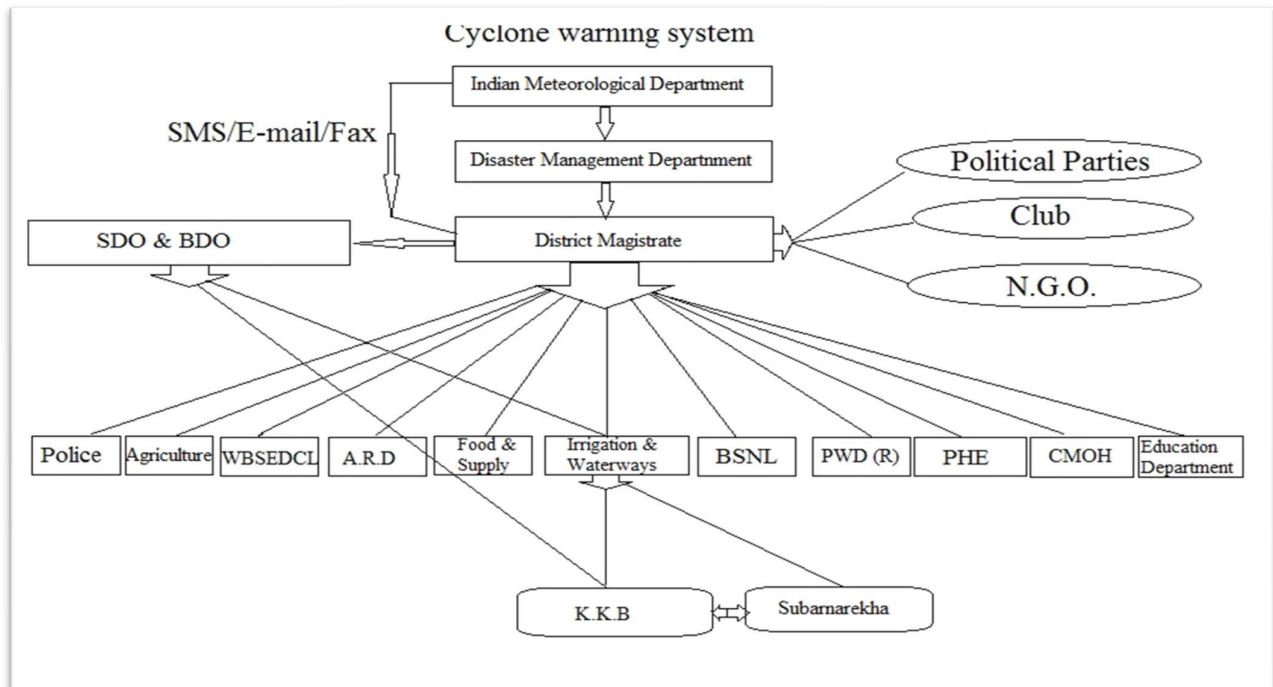
Jhargram is not a cyclone prone district. Few instances of thunderstorms along with heavy rain happens during monsoon season and upper air circulation induced rains of summer season.

2.5. Standard Risk Assessment of Disasters:

Four Stages Cyclone Warning System:

Stage I: With the formation of Depression over Bay of Bengal, the Chief Secretary, Govt. of West Bengal is informed by the Director General of Meteorology, IMD about its formation, location and potential danger.

Stage II : When the depression is likely to intensify into a cyclone storm or of higher intensity and likely to hit West Bengal coast within next 48 hours the numbered cyclone alert messages are issued at regular intervals and the message is passed to the Govt. of West Bengal over fax also to AIR/TV for repeated broadcast. All the concerned officials are advised to remain in touch with IMD for latest development. Fishermen warnings are also issued regularly.



Stage III: When the CS/SCS/VSCS/Super Cyclone is likely to hit West Bengal coast within 24 hours, numbered cyclone warning bulletins are issued six times a day to Govt. of West Bengal and also to AIR/TV for repeated broadcast. **Stage IV:** After crossing the coast a de-warning message is issued.

Risk Level	Extent of damage
Damage risk level for earthquake	
High Damage Risk (H)	Gaps in walls; parts of buildings may collapse; separate parts of the building lose their cohesion; and inner walls collapse
Moderate Damage Risk (M)	Large and deep cracks on walls fall of chimneys on roofs.
Low damage Risk (L)	Small Cracks in walls; fall of fairly large pieces of plaster, pantiles slip off; cracks in chimneys, part may fall down.
Damage Risk levels for Wind Storms	
Very High Damage Risk (VH)	Generally similar to: High Risk” but damage is expected to be more widespread as in the case of cyclonic storms.
High Damage Risk (H)	Boundary walls overturn, walls in house and industrial structures fail; roofing sheets, and tiles or whole roofs fly large scale destruction of life-line structures such as lighting and telephone poles, a few transmission line towers / communication towers may suffer damage; and non engineered / semi constructions suffer heavy damage.
Moderate Damage Risk (M)	Loose tiles of clay fly, roofs sheets fixed to battens fly; moderate damage to telephone and lighting poles; moderate damage to non-engineered/semi-engineered buildings.
Very Low damage Risk (VL)	Loose metal or fibre cement sheets fly; a few lighting and telephone poles go out of alignment; sign boards hoardings partially damaged; well detailed non-engineered/semi-engineered buildings suffer very little damage.
Damage Risk levels for Flood	
Very High Damage Risk (VH)	Total collapse of buildings; roof and some walls collapse; floating away of sheets, thatch etc; erosion of foundation; severe damage to life line structures and systems.
High Damage Risk (H)	Gaps in wall; punching of holes through wall by flowing water; parts of buildings may collapse; light roofs float away; erosion of foundation, sinking or tilting; undercutting of floors, partial roof collapse.
Moderate Damage Risk (M)	Large and deep cracks in walls; loss of belongings; damage to electric fittings.
Low damage Risk (L)	Small cracks in walls; fall of fairly large pieces of plaster
Very Low damage Risk (VL)	Fine cracks in plaster; fall of small pieces of plaster.

3. Rehabilitation and Reconstruction Plan

Rehabilitation and reconstruction comes under recovery phase immediately after relief and rescue operation of the disaster. This post disaster phase continues until the life of the affected people comes to normal. This phase mainly covers damage assessment, disposal of debris, disbursement of assistance for houses, formulation of assistance packages, monitoring and review, cases of non-starters, rejected cases, non-occupancy of houses, relocation, town planning and development plans, awareness and capacity building, housing insurance, grievance redressal and social rehabilitation etc.

3.1 Post Disaster Reconstruction and Rehabilitation

Post disaster reconstruction and rehabilitation should pay attention to the following activities for speedy recovery in disaster hit areas. The contribution of both government as well as affected people is significant to deal with all the issues properly.

Damage assessment

Disposal of debris

Disbursement of assistance for houses

Formulation of assistance packages

Monitoring and review

Cases of non-starters, rejected cases, non-occupancy of houses Relocation

Town planning and development plans

Reconstruction as Housing Replacement

Policy Awareness and capacity building

Housing insurance

Grievance redressal

3.2. Reconstruction of House Damaged / Destroyed

House should be reconstructed in the disaster hit areas according to the following instructions:

1. Owner Driven Reconstruction
2. Public Private Partnership Programmed (PPPP)
3. Under the PPPP the house are reconstructed by the NGOs for the beneficiaries to be registered in the joint names of the husband and wife.
4. All the houses should be insured.
5. Owner Driven Reconstruction.
6. Financial, technical and material assistance provided by the Government.
7. The designs for seismic reconstruction of houses provided by the Government.
8. The material assistance provided through material bank at subsidized rates.
9. Design of 20 model houses provided to public to choose from with an option to have one's own design

3.3. Help of External Agencies

If the District Administration feels that the situation is beyond its control then immediate assistance of various external agencies like SDRF, NDRF, CRPF, Military etc. can be sought for carrying out the relief operation through a set of protocol.

3.4. Medical Care

Specialized Medical Care may be required to help the affected population preventive medicine may have to be taken to prevent outbreak of diseases.

3.5. Epidemics

In the relief camps set up for the affected population, there is a likelihood of epidemics form of a number of sources. The strategy should be to subdue such sources and immunize the population against them. The public health centers, health departments can practice vaccination drives, public awareness to drink boiled water, use chlorine tablets to purify the water sources.

3.6. Corps Disposal

Disposal of dead bodies is to be carried out as a part of the operation to prevent outbreak of epidemics. Minimum official requirements should be maintained as it is a very sensitive issue. The following points may be considered by the concerned authorities at the time of corps disposal:-

1. Mass photographs of corpses,

2. Consent of the relatives or hand over them,
3. Make panchnama of concerned localities.

3.7. Salvage

A major effort is needed to salvage destroyed structure and property. Essential services like communications, roads, bridges, electricity would have to be repaired and restored for normalization of activities.

3.8. Managing external Assistance

During disaster situation, considerable relief flows in from outside, thus there is an immediate need to coordinate the relief flows so that the maximum coverage is achieved and there is no duplication of work in the same area.

3.9. Special Relief

Along with compensation packages, essential items may have to be distributed to the affected population to provide for temporary subtenance.

3.10. Information

Information flow and review is essential part of the relief exercise. Constant monitoring is required to the extent of damage, which forms the basis of further relief to the affected areas.

3.11. Social Rehabilitation

Disabled persons

1. Artificial limbs fitted to affected persons.
2. Modern wheelchairs, supportive devices provided.

Children

1. Orphaned children are fostered.
2. Day centers set up.
3. Orphanages established.
4. Child held lines established.

Paraplegics

1. Person scheme introduced for paraplegics.
2. Physiotherapy under continuous supervision of doctor.

Old Persons

1. Aged persons given pensions.
2. Old Age Homes established.

Women

1. Pension sanctioned.

4. DDMP

4.1 Introduction

The District Disaster Management Plan (DDMP) aims to make the District Disaster resilient and reduce loss of lives, infrastructure and economical assets during calamities.

The DDMP provides a framework to deal with all phases of disaster management cycle -prevention, mitigation, response and recovery—and lays down duties and also works simultaneously with various government departments at all levels such as Sub-Division, Blocks and Gram Panchayat level.

It identifies 18 broad activities to be served as a ready reckoner. These include early warning, maps, satellite inputs, information dissemination, evacuation of people, livestock's and animals, medical care, drinking water, essential supplies like food, communication, power, fuel, transportation, disposal of animal carcasses, relief employment, data collection and management.

The most important part of the plan is the horizontal and vertical matrices that we have worked out which clearly states who has to do what right from Panchayat, Block, Sub-Division or local body to district level. The DDMP also identifies short, medium and long term measures to deal with disasters to be completed within five, 10 and 15 years respectively. Besides humans it also suggests ways to protect animals. For instance, it stressed that, "agencies specializing in animal care should provide necessary advisory and support for the care and protection of animals".

In Heat wave conditions, animal and livestock owners must feed adequately with appropriate feed to avoid animal deaths. They must stock suitable feed or forage before Heat wave to feed the livestock. They must avoid exposure of animals to extreme heat. The plan also focuses on human-induced disasters.

The human-induced category includes CBRN (chemical, biological, radiological and nuclear) disasters. Besides, with the natural factors discussed earlier, various human induced activities are also responsible for accelerated impact and increase in frequency of disasters in the district. The DDMP covers disaster management cycle for all types of hazards faced in District, both natural and human-induced. Its mitigation measures and at end the Relief and rehabilitation measures.

4.2 Changing Context of Disaster Management and Enactment of DM Act in India and West Bengal

A profound change in governmental disaster management has occurred during the last decades. Gone are the days of “hunkering down” and riding out the hazard event with a command and control mentality that only focused on clean-up and the rescue of survivors. In its place is an emphasis on the reduction of loss of life and property through mitigation, preparedness, response, and recovery.

The Government of India, in recognition of the importance of Disaster Management (DM) as a national priority, on 23 December 2005 took a defining step by enacting the Disaster Management Act. This is a unique legislation which provides for requisite institutional mechanism for drawing up and monitoring the implementation of the disaster management plans, ensuring measures by various wings of the Government for prevention and mitigating effects of disaster and for undertaking a holistic, coordinate and prompt response to any disaster situation.

The state of West Bengal has already adopted National Disaster Management Act, 2005. Chapter IV of DM Act, 2005 mandates every district in the country to constitute a District Disaster Management Authorities. Article 31 of DM Act, section of the DM Act, 2005 provides that “there shall be a plan for disaster management for every district of the state. The district plan shall be prepared by the District Authority, after consultation with the local authorities, covering HRVA measures to be taken for prevention with the local authorities, covering HRVA measures to be taken for prevention and mitigation of disaster, capacity building and preparedness measures and response plan. The response plan includes allocation of responsibilities to the depth at local to district level; prompt response and relief, procurement of essential resources; establishment of communication link, and public awareness”. Subsection of Article 31 says that the district plan shall be received and update annually.

4.3 Aims and Objectives of the DDMP

Aims:

The District Disaster Management Plan (DDMP) aims at identifying the disasters and threats that are prevalent in the district, and at the same time addressing the processes that would be involved in addressing the disasters in the district. It is a consolidated guidelines and plans of the district disaster management department in collaboration with the line department in addressing disaster situations.

Meaning of Disaster Management: “Disaster Management” means a continuous and integrated process of planning, organizing, coordinating and implementing measures which are necessary or expedient for-

- Prevention of danger or threat of any disaster;
- Mitigation or reduction of risk of any disaster or its severity or consequences;
- Capacity building;
- Preparedness to deal with any disaster;
- Prompt response to any threatening disaster situation or disaster;
- Assessing the severity or magnitude of effects of any disaster;
- Evacuation, rescue and relief;
- Rehabilitation and reconstruction.

The District Disaster Management Plan (DDMP) is a consolidated format of the plans and actions of the various government departments in the district and the roles and responsibilities they would take up in the time of disaster.

Objectives:

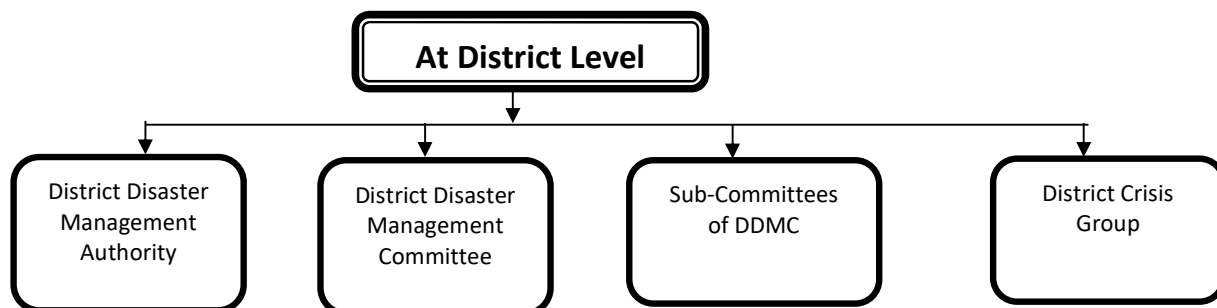
The major objective of the disaster management plan is to minimize the impact of any disaster and increase the capacity of the administration to have coordinate effort to reduce the impact of any disaster and minimize the human and capital loss.

- To find out the type of risks the district is vulnerable to.
- To measure the vulnerability of life and livelihood and infrastructures to different type of risks.
- To develop a multihazard preparedness plan for effective management of different type of disasters the district is vulnerable to.
- Institutionalization of the disaster management in district administration
- To develop strategy for mass awareness on do's and don'ts on different type of disasters.
- To find out the resources of the district.
- To create a cadre of skilled volunteers to respond to different type of disasters.
- To make interdepartmental coordination more effective at the time of emergency.
- Encouraging and empowering the local community to know the disaster management
- Regular update of the resource available in and around the district.

To strengthen the capacities and resilience of vulnerable community with special emphasis on empowerment of women and establish community level systems for pre, during and post disaster interventions through awareness generation and capacity building.

4.4. Disaster Management: Functional Structure in The District

The disaster management will be more effective and sustainable if it is institutionalized. For this purpose Government of India has already passed the Disaster Management Act, 2005 Act No.53 of 2005, on 23rd December, 2005, which has already been adopted by Government of West Bengal. The Government of West Bengal, in exercise of powers conferred by the Act, has established the West Bengal State Disaster Management Authority vide Notification No.1281-FR-1st August, 2007 and also established District Disaster Management Authority vide Notification No.1291-FR-1st August 2007. The District Magistrate is overall in charge for the entire disaster management activities in the District. As per Section 28 of the Disaster Management Act, 2005, the District Authority may constitute one or more Advisory Committee and District Disaster Management Committee for better implementation of disaster management activities in the district.



4.5. District Disaster Management Authority

As per Notification No.1291-FR-1st August, 2007 the District Disaster Management authority consisting Chairperson and six members having Head Quarter at District level has been established. It acts as the district planning; coordinating and implementing body for disaster management and takes all measures for the purpose of Disaster Management in accordance with the guidelines laid down by the National and the state Authority

District Disaster Management Authority (D.D.M.A.) (GO No.1308-FR dated 01.08.2007)

1. Collector of the District: CHAIRPERSON
2. Sabhadhipati of Zillah Parishad: CO-CHAIRPERSON
3. Addl. District Magistrate (Disaster Management) : CEO, Ex-officio Member
4. Superintendent of Police: Ex-officio Member
5. Chief Medical Officer of Health: Ex-officio Member
6. Executive Engineer, Irrigation : Ex-officio Member
7. All Sub-Divisional Officers : Ex-officio Member

At the District Level, there should be a District Disaster Management committee, at Block Level, there should be a Block Disaster Management Committee and at village level there should be village level there should be village Disaster Management Committee.

Apart from these disaster management committees, at each level there should be a disaster management plan as per vulnerability to disaster of that particular area along with the various task forces like search and rescue, first aid, early warning system, food management, shelter management, dead body disposal force etc.

Village (Gram Panchayat) Level: Panchayat are the decision making bodies of all development activities in the villages. Therefore, every Panchayat should have a Village level Disaster Management Committee (VDMC) headed by the Pradhan which is responsible for carrying out activities from Planning to Execution in Disaster Management. There should be a separate village disaster management plan for every village as per vulnerability to disaster of the particular village. The plan encompasses prevention, mitigation and preparedness measures. The VDMC chaired by Pradhan includes, ward members, gramsevak, local Government functionaries including doctors/paramedics of primary health centers located in the village, primary school teachers etc. also a search and rescue team as well as first aid team have to be set up and trained at every village. The Disaster Management Teams at the village level will consist of members of youth organizations like Nehru Yuva Kendra and other non-governmental organizations as well as able bodied volunteers from the village. The teams are to be provided basic training in evacuation, search and rescue, first aid trauma counseling etc.

Sansad Level:the village where Sansad members are members of VDMC they should get involved in taking all sort of major decisions related to Disaster Management, whether it is the Disaster Management Preparedness Plan or preparation to respond during the disaster. They are important identities in the village representing the community. The Disaster Management Committee will review the disaster management plan at least once in a year. It would also generated awareness among the people in the village about do's and do not do's for specific hazards depending on the vulnerability of the village.

Block Level: every Block in the district should have a Block Disaster Management Committee headed by Chairperson Panchayat Samiti and all line departments at block level are its members.

District Level: the District Disaster Management Authority and district disaster management committee should be constituted under the chairmanship of District Magistrate and Sabhadhipati respectively.

The District Disaster Management Authority shall act as the District Planning; coordinating and implementing body for disaster management and take all measures for the purpose of disaster management in the district in accordance with the guidelines laid down by the National Authority and the State Authority.

4.6. The role of District Disaster Management Authority

- I. Prepare a disaster management plan including district response plan for the district;
- II. Coordinate and monitor the implementation of the National Policy, West Bengal State Disaster Management Policy, national Disaster Management plan, West Bengal Disaster Management Plan and District Disaster Management Plan;
- III. Ensure that the areas in the district vulnerable to disasters are identified and measures for the prevention of disasters and the mitigation of its effects are undertaken by the departments of the Government at the district level as well as by the local authorities.
- IV. Ensure that the guidelines for prevention of disasters, mitigation of its effects, preparedness and response measures as laid down by the National Authority and the West Bengal State Authority are followed by all departments of the Government at the district level and the local authorities in the district;
- V. Give directions to different authorities at the district level and local authorities to take such other measures for the prevention or mitigation of disasters as may be necessary.
- VI. Lay down guidelines for prevention of disaster management plans by the departments of the Government at the districts level and local authorities in the district;
- VII. Monitor the implementation of disaster management plans prepared by the departments of the Government at the district level.
- VIII. Lay down guidelines to be followed by the Departments of the West Bengal Government at the district level for purpose of integration of measures for prevention of disasters and mitigation in their developmental plans and projects and provide necessary technical assistance therefore;
- IX. Monitor the implementation of measures referred to in Item N.
- X. Review the state capabilities for responding to any disaster or threatening disaster situation in the district and give directions to the relevant departments or authorities at the district level for their up-gradation as may be necessary.
- XI. Review the preparation measures and give directions to the concerned departments at the district level or other concerned authorities where necessary for bringing the preparedness measures to the levels required for responding effectively to any disaster or threatening disaster situation;

- XII. Organize and coordinate specialized training programmes for different levels of officers, employees and voluntary rescue workers in the district;
- XIII. Facilitate community training and awareness programmes for prevention of disaster or mitigation with the support local authorities, government and non-governmental organisations;
- XIV. Set up, maintain, review and upgrade the mechanism for early warnings and dissemination of proper information to public;
- XV. Prepare, review and update district level response plan and guidelines;
- XVI. Coordinate response to any threatening disaster situation or disaster;
- XVII. Ensure that the departments of the Government at the district level and the local authorities prepare their response plans in accordance with the district response plan;
- XVIII. Lay down guidelines for, or give direction to, the concerned department of the Government at the district level or any other authorities within the local limits of the district to take measures to respond effectively to any threatening disaster situation or disaster;
- XIX. Advise, assist and coordinate the activities of the Departments of the Government at the district level, statutory bodies and other governmental and nongovernmental organisations in the district engaged in the disaster management;
- XX. Coordinate with, and give guidelines to, local authorities in the district to ensure that measures for the prevention or mitigation of threatening disaster situation or disaster in the district are carried out promptly and effectively;
- XXI. Provide necessary technical assistance or give advice to the local authorities in the district for carrying out their functions;
- XXII. Review development plans prepared by the Departments of the Government at the district level, statutory authorities or local authorities with a view to make necessary provisions therein for prevention of disaster or mitigation.
- XXIII. Examine the construction in any area in the district and, if it is of the opinion that the standards for the prevention of disaster or mitigation laid down for such construction is not being or has not been followed, may direct the concerned authority to take such action as may be necessary to secure compliance of such standards;
- XXIV. Identity buildings and places which could, in the event of any threatening disaster situation or disaster, be used as relief centres or camps and make arrangements for water supply and sanitation in such buildings or places;
- XXV. Establish stockpiles of relief and rescue materials or ensure preparedness to make such materials available at a short notice;
- XXVI. Provide information to the State Authority relative to different aspects of disaster management;
- XXVII. Encourage the involvement of non-governmental organisations and voluntary social-welfare institutions working at the grassroots level in the district for disaster management;
- XXVIII. Ensure communication systems are in order, and disaster management drills are carried out periodically; Perform such other functions as the West Bengal Government or the West Bengal Disaster Management authority may assign to it or it deems necessary for disaster management in the district.

4.7. Authority for DDMP

DISTRICT DISASTER MANAGEMENT COMMITTEE, JHARGRAM

- | | |
|--|-----------------|
| 1. The Sabhadhipati, Zilla Parishad, Jhargram | Chairman |
| 2. The District Magistrate, Jhargram | Vice-chairman |
| 3. The Additional District Magistrate (Gen), Jhargram | MemberSecretary |
| 4. The Superintendent of Police, Jhargram | Member |
| 5. The Karmadhakshya, Tran Sthayee Samity, Zilla Parishad, Jhargram. | Member |
| 6. The Chief Medical Officer of Health., Jhargram | Member |
| 7. The Executive Engineer, P.W.D., Jhargram | Member |
| 8. The Executive Engineer, P.H.E., Jhargram | Member |
| 9. The Executive Engineer, I.&W.Deptt., Jhargram | Member |
| 10. The Principal Agriculture Officer, Jhargram | Member |
| 11. The District Animal Resources Dev. Officer, Jhargram | Member |
| 12. The District Disaster Management Officer, Jhargram | Member |
| 13. The District Inspector of Schools (Primary), Jhargram | Member |
| 14. The District Inspector of Schools (Secondary), Jhargram | Member |
| 15. Hon'ble Members of Legislative Assembly
(All MLAs of Jhargram District) | Member |

4.8 Evolution of DDMP

Disaster Management Act, 2005, (23 December 2005) No. 53 of 2005, was passed by the Rajya Sabha, the upper house of the Parliament of India on 28 November, and by the Lok Sabha, the lower house of the Parliament, on 12 December 2005. It received the assent of The President of India on 9 January 2006. The Disaster Management Act, 2005 has 11 chapters and 79 sections. It clearly indicates all states and all District of India has to create a Disaster Management Plan.

4.9 Nodal ministries related to various categories of disasters

- Earthquakes and Tsunami- MHA/Ministry of Earth Sciences/IMD
- Floods- MHA/Ministry of Water Resources/CWC
- Cyclones- MHA/Ministry of Earth Sciences/IMD
- Drought- Ministry of Agriculture
- Biological Disasters- Ministry of Health and Family Welfare
- Chemical Disasters- Ministry of Environment & Forests
- Nuclear Disasters- Department of Atomic Energy
- Air Accidents- Ministry of Civil Aviation
- Railway Accidents- Ministry of Railways
- Terrorism, bombblast, Riots- Ministry of Home Affairs

4.10. District Crisis Management Group (GO No.401 (35)-RL/O//7M-37/08 dated 03.03.2016)

- 1) The District Magistrate will head the District Crisis Management Group. It will have the following members:
 - a) Commissioner of Police / Superintendent of Police
 - b) A representative of IB
 - c) Dy. Development Commissioner / Additional District Magistrate

Any other district officer, as appropriate may be co-opted as a member, Senior most officer of the Armed Forces and CAPFs posted in the district be also included in the Group. Where the NSG have been requisitioned for assistance, the NSG Task Force Commander may be co-opted as a member. Where NDRF is deployed or stationed, their representative may be co-opted as a member.

- 2) This Group will be responsible for on-scene management of the incident / emergency in the district level. All agencies will provide resources to this Group as required. Where a specialist Response team is deputed by the State / Central Group, this Group will normally abide by the advice of the said specialist Response team; but the ultimate decision will be that of the District / State Crisis Management Group.
- 3) There will be Control Room at the State level and at the district levels. The Control Room will be linked to the Control of the Ministry of Home Affairs by telephones, fax, internet and satellite phones.
- 4) Regular communication exercise shall be conducted with all stakeholders.
- 5) District Crisis Management Group will also meet periodically at least once in three months and as and when a crisis is at hand.

The District Magistrate will brief the media suitably from time to time regarding the progress in handling the contingency / emergency.

5. Standard Operating Procedure for Jhargram District Administration

District level Disaster management Group may be formed comprising:

1. Addl. District Magistrate(G) , Jhargram as Nodal Officer
 2. Sub Divisional Officer, Jhargram Sadar
 3. Officer In-charge, DMD, Jhargram
 4. DDMO, Jhargram.
 5. All BDOs of Jhargram
 6. RTO, Jhargram
 7. NDC, Jhargram
 8. Officer in charge, Food , Jhargram
- a) BDO in co-ordination with ICs and OCs will collect prior intelligence on probable disaster and cater the same to all zonal superiors and district control room.
 - b) After commission of disaster, BDOs team will take part in rescue operation in consultation with respective OCs with available force and officers.

- c) BDOs after consulting with GP level officials and examining the gravity of disaster shall open a 24 hrs. control room in the disaster affected places
- d) Such control room shall have all facilities as per standard rule
- e) Control room Shall have a register for recording grivence and loss of property of disaster affected people
- f) Security to relief camp shall be provided by ICs/OCs whenever sought for.
- g) RTO, Jhargram shall provide vehicle for movement of force and officer and of vehicle carrying relief materials.
- h) QRTs to be in action for combating against disaster.

Reserve Stock of Relief Materials

The present stock position of Relief Material and foodgrains at the District Hqrs. is as follows:

Items	Available	Further Requirement
Polysheet	4379 Pcs.	6500 Pcs.
Saree	595 Pcs.	4000 Pcs.
Dhuti	75 Pcs.	4000 Pcs.
Lungi	45 Pcs.	4000 Pcs.
Children Garments	250 Pcs.	6,000 Pcs.
Blankets	230 Pcs.	5000 Pcs.
Bed sheet	250 Pcs.	4000 Pcs.
Salwar Kamij	-	4000 Sets.
Punjabi & Pajjama	10 Sets	4000 Pcs.
Spl. GR (Rice)	564 M.T.	200 M.T.

Portable Inflatable Speed Boat

District Headquarter	1
Sankrail	1 (Speed Boat)
Gopiballavpur II	1(Speed Boat)

6. Disaster Mitigation Plan of Irrigation & Waterways Directorate West Midnapore Division

A) The following River Gauge & Rain Gauge Station has been maintained by this Division

Sl. No.	Stations	River	P.D.L.(M) M.G.T.S.	D.L.(M) M.G.T.S.	E.D.L.(M) M.G.T.S.	Remarks
1	Saldahari	Old Cossye	15.39	16	16.61	Do
2	Gopiballavpur, Asui, Dharampur	Subarnarekha	45.00	45.50	46.50	Rain Gauge & River Gauge

B) Reporting of River Gauges & Rain Gauges at different Authorities.

Rain gauge stations are maintaining under this Division at i)Midnapore. (ii) Gopiballavpur, (iii) Gadhat. Daily river gauge reports are to be collected from C.W.C. in connection with Kangsaboti Project. River & Rain gauge data will be prepared as per approved format and weekly format as per G.F.C.C. Proforma and sent to the following authorities :-

- i) District Magistrate, Jhargram.
- ii) Chief Engineer's flood cell

C) Weekly flood inspection report:

Weekly flood report is to be submitted by the concerned Sub-Divisional Officer as usual following last year's procedure.

D) Flood fighting works

Flood fighting works will be undertaken as and when necessary under prior intimation to The District Magistrate and obtaining permission from higher official of I&W Dte.

In the event of any breach, report will be at once transmitted to Sabhadhipati & Karmadakshya, Jhargram Zilla Parishad, Block Development Officer of concerned Block & Sub Divisional Officer of concerned Sub Division

& Higher officer of I&W Dte. Repair of breach can only be taken with prior permission of Government with written requisition from The District Magistrate and Sabhadhipati to take up such work.

E) Hiring Of Boats & Operating Regulator Gates And Fall Boards:-

Decision for Hiring of boat will be taken as and when situation demands. Generally sluice gates are operated by the local farmers / Panchayet functionaries as per their requirement throughout the year. So, decision for engagement for operating regulator gates and guarding & operation of Fall Boards will be taken as and when situation arises.

7. Disaster Mitigation plan of Food & Supplies Department

Rolling reserve the stock of Rice will be build up at the Godowns of MR Distributors in the flood prone areas of the District.

Rolling reserve a stock of Rice:-

To build up rolling reserved stock of Rice (Procured Rice-Common boiled) at the Godowns of M.R. Distributors in the flood prone areas of the District. The said Rice will be handed over to the S.D.O.s / B.D.O.s as and when necessary subject to its replenishment forthwith by special G.R. Rice of the same variety.

1. Each MR Distributor will preserve 10 MT of rice as rolling reserve stock in his godown ;
2. All SK Oil Agent will preserve 05 K.L. of Kerosene Oil as rolling reserve stock in his godown;
3. The SCF&S, Jhargram will arrange for keeping sufficient rolling stock of Rice, Sugar, iodized salt, edible Oil etc. at each FPS godown during the pre- monsoon cyclone time and flood in the running year.

8. Disaster Mitigation Plan of Superintendent of Police, Jhargram

A) A District Police Disaster Management Group may be formed comprising :

- i) Addl. Supdt. of Police (HQ), Jhargram as Nodal Officer
 - ii) All Zonal Dy.SP, Jhargram
 - iii) All CIs of Jhargram
 - iv) All ICs/OCs of Jhargram
 - v) OC Control Room, Jhargram
 - vi) RI, Jhargram
 - vii) MTO, Jhargram
- B) ICs and OCs in co-ordination with BDMO, BDO will collect prior intelligence on probable disaster and cater the same to all Zonal Superiors and OC Control Room.
- C) After commission of disaster ICs/OCs of PSs shall take part in rescue operation in consultation with respective BDOs with available force and officers.
- D) ICs/OCs after consulting with Zonal Superiors and examining the gravity of disaster shall open a Control Room in the disaster affected places.
- E) Such Control Room shall have all facilities as per standard rule.
- F) Control Room shall have a GD Book for recording grievance and assess of loss of property of disaster affected people.
- G) Escort for food and other relief materials shall be provided by the respective ICs/OCs whenever sought for.
- H) Security to relief camp shall be provided by ICs/OCs whenever sought for.
- I) RI/API Jhargram shall provide additional force and officer.
- J) MTO, Jhargram shall provide vehicle for movement of force and officer and escort of vehicle carrying relief materials.
- K) OC Control Room shall cater all information to all concerned.
- L) CIs shall personally supervise all activities of PSs regarding rescue operation, ensure that no untoward incident takes place at the time of distributing relief materials and ensure security of relief camp.
- M) Six (06) Teams to be formed for implementation of the Disaster Management Plan of Police in combating against Flood / Cyclone :

Team One

To be placed at the PO for conducting of tasks relating to rescuing, shifting of injured persons to the hospitals and safe places.

Team Two

Will be placed at the place of shelter for the affected people and will be entrusted with the duty of looking after the servicing of food, drinking water and medicines to the rescued persons.

Team Three

To be placed at hospitals/health units etc. where injured to be shifted and ensure proper medical treatment of the injured persons.

Team Four

Will be engaged in sharing information through constant communication with the public from Special Control Room and venue.

Team Five

Will assist Team One and will ensure smooth and safe evacuation of the trapped flood/ cyclone affected people of the venue of the mass gathering.

Team Six

To be placed on District Headquarter to maintain liaison with various agencies. It will also keep liaison with the NGOs willing to provide voluntary service in such emergency situation and issue direction to them to act according to the plan and policy of the District Disaster Management Team of Police.

B) S.O.P on Drowning of Vehicle

1. OC of respective police jurisdiction shall inform District Disaster Management Officer (to send diver), District Control Room and Nodal Officer of the District (Addl. SP (HQ) and rush to the PO instantly.
2. OC Control Room shall inform all adjoining PSs to remain alert.
3. OC of respective police unit will cordon the place of occurrence and prevent onlookers, relatives of injured persons, media personnel from entering into place of occurrence and causing hindrance to rescue operation.
4. OC shall conduct operation in search of injured persons and dead bodies.
5. OC Control Room shall alert all nearest hospitals including Midnapore Medical College & Hospital to remain ready with life saving equipments.
6. Crane, Gas Cutter and other equipments to lift the drowning vehicle to be called.
7. Four teams to be formed for
 - a) Team – 1 to be placed at the PO for conducting all tasks relating to rescuing, shifting of injured persons to the hospital, searching etc.
 - b) Team – 2 to be placed at the hospital (where injured were shifted) to look after the injured persons
 - c) Team – 3 to be placed at District Control Room to cater various information
 - d) Team – 4 to be placed at District Headquarters to maintain liaison with various agencies.
8. Injured persons to be shifted to nearest hospital with facilities of caring drowning injuries quickly.
9. Nodal Officer of the district (Addl. SP (HQ), Jhargram shall inform to Disaster Management Group, 13th Bn. Barjora, Bankura for necessary action.
10. OC of respective Police Station shall canvass with the assistance of Public Address System to prevent spreading rumour.
11. Forensic Team to be called to collect evidence from the place of occurrence.
12. On reaching of Disaster Management Group entire operation shall have to be handed over to them and necessary assistance, support to be provided whenever asked for.

C) S.O.P on Fire Fighting

1. OC of respective police jurisdiction shall inform Fire Fighting Agency, District Control Room and Nodal Officer of the District (Addl. SP (HQ) and rush to the PO instantly. He will alert all other members of the Disaster Management Team and will supervise the rescue operation. He will be responsible in sending an expert rescue team along with fire brigade to the place of occurrence and at the same time will activate all the units in sub-divisional and PS level District Management Team.
2. OC Control Room shall inform all adjoining PSs to remain alert.
3. OC of respective police unit will cordon the place of occurrence and prevent onlookers, relatives of injured persons, media personnel from entering into place of occurrence and causing hindrance to rescue operation.
4. OC shall conduct searchoperation of injured persons and dead bodies.
5. OC Control Room shall alert all nearest hospitals including Midnapore Medical College & Hospital to remain ready with life saving equipments.
6. Four teams to be formed for
 - i) Team – 1 to be placed at the PO for conducting all tasks relating to rescuing, shifting of injured persons to the hospital, searching etc.
 - ii) Team – 2 to be placed at the hospital (where injured were shifted) to look after the injured persons.
 - iii) Team – 3 to be placed at District Control Room to cater various informations.

- iv) Team – 4 to be placed at District Headquarters to maintain liaison with various agencies.
- 7. Injured persons to be shifted to nearest hospital with facilities of caring burnt injuries quickly.
- 8. Nodal Officer of the district (Addl. SP (HQ), Jhargram shall inform to Disaster Management Group, 13th Bn. Barjora, Bankura for necessary action.
- 9. OC of respective Police Station shall canvass with the assistance of Public Address System to prevent spreading rumour.
- 10. Dog Squad to be called for rescue of injured persons and dead bodies.
- 11. Forensic Team to be called to collect evidence from the place of occurrence.
- 12. On reaching of Disaster Management Group entire operation shall have to be handed over to them and necessary assistance, support to be provided whenever asked for.

D) S.O.P on Combating Disaster in the Venue of Mass Gathering

- 1. OC/IC of respective PS under which jurisdiction the disaster took place shall immediately inform the Disaster Management Officer of Police as well as alert District Control Room and Nodal Officer of the district and seek for necessary reinforcement.
- 2. The Chief Supervisory Officer, who is In-Charge of the venue will at once sensitize all the other subordinate officers in all ranks under him to pass on the necessary information to the ground level officers so that communication should reach to the top of the District Police Administration and at the same time all the field level officers and police personnel deployed in the venue. All of them should be well aware of the disaster and take necessary action according to the 'Master Plan' which will be evolved by the District Disaster Management Team of Police considering the emergency of the situation. The officers and police personnel in the venue of disaster should implement the 'Action Plan' so far as the work of the crowd choked up in a place of mass gathering is concerned.
- 3. The trespassed crowd should be channelized through ongoing ways only and at the same time emergency 'Entry & Exit' points should be made open for easy dispersion of crowd.
- 4. District Disaster Management Team of Police should communicate Health Department, Fire Department and other emergency services for their additional reinforcement in the disaster affected venue as early as possible.
- 5. The District Disaster Management Team of Police should contact with the Civil Defence Team and ask them to rush to the spot on emergency basis.
- 6. The Nodal Officer of Traffic, i.e. Dy. Supdt. of Police (Traffic), Jhargram will take initiative in making adequate traffic management in an around the vicinity of the disaster affected venue for smooth and early evacuation of the dispersed crowd from venue to safe place.
- 7. Dy. Supdt. of Police (Traffic), Jhargram in consultation with concerned RTA will also arrange for additional public conveyance adjacent to the venue.
- 8. District Disaster Management Team of Police will immediately contact with the top level District Civil Administration and ensure the safe shelter of the dispersed crowd in the place of evacuation which should be kept ready with food, drinking water and medical facilities.
- 9. Nodal Officer of the district i.e. Addl. Supdt. of Police (HQ), Jhargram will direct all the senior supervisory officers in the rank of Dy. Supdts. of Police and Inspectors to move to the place along with adequate officers and force under their administrative jurisdiction.
- 10. A Sub-Control Room should be opened on 24 hours basis with the facilities of public address system for making constant communication with the panicked members of the crowd in the venue. This group will also ascertain so that unnecessarily no rumour can be spread to arouse panic among the masses.
- 11. OC/IC of the concerned PS will take the responsibility to display the Bus/Train Time Table at important locations of the town/city nearby the venue.
- 12. Up-to-date train running, specially the trains running late, can be displayed at appropriate locations to avoid crowd of the railway stations.
- 13. Senior officers deployed in the venue should ensure that 'Entry & Exit' points should not be blocked in any way as sometimes information seekers often use to assemble the 'Entry/Exit' points and eventually block the movement of the other visitors.
- 14. RI, Jhargram will mobilize adequate officers and force to the affected place from District Police Lines as well as from other units of the district.
- 15. MTO, Jhargram will provide adequate number of vehicles required for mobilization of the officers and force.
- 16. Forensic Team to be called to collect evidence from the place of occurrence.

17. Nodal Officer of the district, i.e. Addl. Supdt. of Police (HQ), Jhargram shall inform to Disaster Management Group, 13th Bn. Barjora, and Bankura for necessary action.
18. Four teams to be formed for
 - e) Team – 1 to be placed at the PO for conducting all tasks relating to rescuing, shifting of injured persons to the hospital, searching etc.
 - f) Team – 2 to be placed at the hospital (where injured were shifted) to look after the injured persons.
 - g) Team – 3 to be placed at District Control Room to cater various information
 - h) Team – 4 to be placed at District Headquarters to maintain liaison with various agencies.

9. Disaster Mitigation Plan of F.P.I & Horticulture Department

Jhargram District is rich in Horticultural crops. All types of Horticultural crops are grown in this district. Product of Horticulture is prime source of our food chain and this district produces most of the crops like- Vegetables mainly grown in Gopiballavpur-I, Gopiballavpur-II, Jhargram, Sankrail, Jamboni, and Binpur-I Blocks. Fruits mainly grown in Gopiballavpur-I, Noyagram, Jamboni etc. Cashewnut grown in all blocks of Jhargram districts.

Vegetables and Fruit and Cashewnut are remunerative crop and cultivation of these crops helps upliftment of economic status in a short period. So, Horticultural planning is made in such a way by which the adversed situation affected by flood and drought can be combated.

To overcome the adverse effect of Flood:

1. Seed showing of leafy vegetable for immediate harvesting like- Amaranthus, Palak, Radish, coriander, Methi etc.
2. Other short duration direct showing crops like Cowpea, Ridge Gourd, Pumpkin, Cucumber, Bottle Gourd etc. are suitable after flood.
3. After flood clay deposited soil are suitable for vegetable cultivation and deposited sand will be removed by means of manually or mechanically.

To overcome the adverse effect of Drought:

1. Digging of water Harvesting Structure like Ponds, Tube well and other irrigation sources.
2. Inspiring for installation of drip irrigation for all horticultural crops.
3. Plantation of Dry land Horticultural Crop like-Cashew, Ber etc.
4. Providing mulching to the base of the crop by means of organic or inorganic.

Action to be taken by the farmers in Flood:

1. Crops are grown in furrow and ridge bed method.
2. Well drainage system throughout the plot.
3. Seedling production in raise bed protected by polythene for rain water.
4. After flood immediate application of fungicide to the crop.
5. Seeds are sowing in line in nursery and maintain proper spacing to avoid rotting of the crop.

Action to be taken by the farmers in Drought:

1. Planning for less water requirement crop.
2. Planting of crop with enough organic matter with poly mulching.
3. Sprinkler or Drip irrigation method is most suitable for drought prone area.
4. In drought prone area shade nets are beneficial for vegetable and flower production.

Measure to be taken by F.P.I. & Horticulture Department in Flood:

1. Distribution of Vegetable Seed Kit:

KIT-I:

SL No.	Name of the Vegetable Seeds	Quantity
1	Amaranthus	100g
2	Cowpea	100 g
3	Pumpkin	10 g
4	Okra	50g
5	Fungicide	100 g
6	Insecticide	100 ml

KIT-II:

SL No.	Name of the Vegetable Seeds	Quantity
1	Coriander	100g
2	Bottle Gourd	10 g
3	Palak	100 g
4	Radish	50g
5	Fungicide	100 g
6	Insecticide	100 ml

Total nos. kit:

SL No.	Name of crop	Quantity
1	Vegetable	50,000 nos. kit

10. Disaster Mitigation Plan of Flood Management & Planning Division, (I & W Dte.)

The following River Gauge and Rain Gauge Station has been maintain by the Executive Engineer, Jhargram flood Management and Planning division (I & W Dte.), Jhargram .

A) River Gauge And Rain Gauge Station

Sl. No	Station	River	P.D.L(M) M.G.T.S.	D.L(M) M.G.T.S.	E.D.L(M) M.G.T.S.	HFL(M)
1	Gopiballavpur, Asui Dharampur	Subarnarakha	45.00	45.50	46.50	47.20m(on 03.09.78 at 6.00 am)

B) Report of river Gauges & Rain Gauges at different Authorities.

Rain gauge station are maintaining under this division at Gopiballavpur. Daily river gauge reports are collected from Gopiballavpur Section. river & Rain gauge data is being prepared as per approved format format and weekly report as per GFCC proforma and is being sent to following autghorities:-

- I) DM, Jhargram
- II) Chief Engineer, South West

C) Weekly Flood Inspection Report:-

Weekly flood report is to be submitted by the concerned Assistant Engineer as usual following last year's procedure.

D) As reported by the Assistant Engineer & junior Engineers (Regarding stocks):-

1) The stock position of empty cepty cement poly bags at different station are as follows:-

Name of Division	Location	No of empty poly bag	No of
Jhargram Flood management & Planning Division	Jhargram	3500 nos.	Nil
	Gopiballavpur	4500 nos.	Nil
	Total	8000 nos.	Nil

E) Flood Fighting Works:-

Flood fighting works will be undertaken as and when necessary under prior intimation to the District Magistrate and obtaining pemission from higher officer of I& W Dte. In the event of any breach, report will be at once transmitted to Sabhadipati 7 Karmadakshya, Jhargram Zilla parishad, Block development officer of concerned Block & Sub Divisional Officer of concerned Sud Division & Higher officer of I&W Dte. Repairing of river embankment can only be taken with prior permission of Govt, written requisition from the District Magistrate and Sabhadipati to take up such work. Utilization certificate in connection with issued polybags to G.P's is required from concerned BDO's

F) Flood Embankments:-

Under Jhargram Flood Management & Planning Division:-

- A) Asui- Dharampur(R/B of River Subaranakha) – 2.70km.
- B) Sijua, Gopiballavpur – 2.70 km.
- C) Kapasia-Mohanala – 0.90 km.

11. Disaster Mitigation Plan Of ARD Deptt.

Control Room Status in face of Natural Calamity at Dist

Place: State animal Health Center, Bachhurdoba, Jhargram

Like previous year, disaster control room will be set up in different levels, the District Head Quarter, Sector and Block Head Quarters. The control room will be opened when required/as per instruction of district authority. The following officers will remain In-Charge of the control room at different levels. The District level control team will keep an adequate stock of vaccines and medicines and effect supply of those materials to the flood/draught prone Block immediately after declaration. Advance vaccination will be done in the endemic zone only of flood prone area. The team will arrange for quick diagnosis and effecting control measures against epidemic in affected areas. The team will be responsible for collection compilation and submission of daily/weekly report of the flood affected area to the District Head Qtrs. The officer-in-Charge of respective sector will supervise the Vety. Relief work and maintain liaison with the sub-Divisional Officer and District Control Room. The Block Control Team under the supervision of BLDO will render Vety. Aid and Relief measures to the affected areas with the consultation with the Panchayet Authorities and submit daily/weekly report to the sector-in-Charge for onwards transmission to the District Control room through the sector-in-charge. They will assess the actual loss of Livestock and requirement of Feed and fodder, medicines and vaccines and personnel if required and incorporate the sum the daily/weekly report for arranging supply from District Head Quarters.

Above mentioned Officers and staff attached to the Units directly, related to the Vet. Reliefs like SAHC/CMS/Laboratory are requested not to leave their Head quarters without prior permission of the undersigned at the onset of any natural calamities.

12. Preventive and Preparatory Measures of Fisheries Department

Jhargram District is rich in natural water resources which could be further sustainably utilize to develop socio economic condition of the farmers. Fishes are the most remunerative crop and cultivation of the same aggravates up liftment of economic status in a short period. So, fisheries planning is made in such a way by which the adversed situation affected by flood and drought can be combated.

To overcome the adverse effect of Flood:

- (i) Distribution of fishery inputs like net, hundi and wooden boat among the affected farmers.
- (ii) Fish seed distribution among the affected Fish farms, hatchery owners if any.
- (iii) Assistance towards procurement of brood fish for the hatchery owners in order maintain the smooth fish seed production.
- (iv) Distribution of lime to the affected areas.
- (v) Provision of one time subsidy to the affected progressive fish farmers.

To overcome the adverse effect of Drought:

- (i) Construction of concrete reservoir in the each drought prone Gram Panchayat for sustainable utilization for agricultural crops as well as fisheries crops.
- (ii) As fish is the cheap source of protein, vitamin and minerals, it could be taken for maintain healthy life on daily basis.
- (iii) Construction of cold storage can minimize the supply deficiencies of fish during the crisis situation.

Action to be taken by the farmers in Flood:

- (i) Start cultivating air breathing fish culture like, desi Magur, Singhi which requires short culture duration.
- (ii) Dyke of the ponds/ water body should be prepared in a high positions.
- (iii) Use small sized nylon nets for fencing the pond area in order to prevent fish migration during flood.
- (iv) Increase the no. of ponds in different places, so that, crop can be transferred in emergency situation.

Action to be taken by the farmers in Drought:

- (i) Farmers should start the fish culture in small concrete tanks in a short duration.
- (ii) Start their daily intake of fish from the storage fish which have been stored earlier in the cold storage.

Damaged caused by the heavy rainfall in the Jhargram district:

Loss in Fisheries Sector in Jhargram due to heavy Rain fall during the year 2017-18			
Sl. No.	Name of the Block	Water area affected (Ha.)	No. of Fish Farmers
1	Jhargram	35	175
2	Gopiballavpur-I	50	250
3	Gopiballavpur-II	30	150
4	Binpur-I	18	108
5	Binpur-II	15	92
6	Sankrail	38	205
7	Nayagram	12	120
8	Jamboni	20	150
Total-		218	1250

Assistance provided for the flood during the year 2017-18:

Sl.	Category of Loss	Financial Assistance (Rs.)
1	Input subsidy for Fish Farm/Fish Seed Farm	8,200/- / Ha.
2	Replacement of fully damaged boat	9,600/- per boat
3	Partly damaged boat	4,100/- per boat
4	Partly damaged Net	2,100/- / no.

13. Disaster Mitigation Plan of Agri-Mechanical Division:

Jhargram (Agri- Mech) division is looking after the running and maintenance of 160 nos. Govt. owned and operated River Lift Irrigation Schemes.

As the discharge capacity of the diesel pump sets is reduced from the rated capacity due to their (20-25 years) ages resulting in less coverage of irrigation by the old and inefficient diesel pumping sets, the WRID Department started to convert all the diesel operated RLI Schemes to the electrically operated one. The proposed conversion/renovation of 1 no such diesel operated R.L.I Schemes will create an opportunity to bring back nearly 100-120% of the cultivable command area under assured irrigation. The conversion will facilitate easier operation and maintenance of the pumping sets, and will have beneficial effect on the environment besides avoidance of the hazards involved in the carriage & storage of highly inflammable H.S.D and lube oil required for the operation of diesel engine pumping sets.

Existing Structures: -RLI Structures (Govt Owned) are as follows:-

Sl. No.	Type of structure	Nos.	Name of Block	CCA in Ha	Remarks
1	Major RLI	24	Jhargram	1440	
2	Major RLI	26	Jamboni	1560	
3	Major RLI	13	Binpur-I	780	
4	Major RLI	13	Binpur-II	780	
5	Major RLI	16	Gopiballavpur-I	960	
6	Major RLI	32	Gopiballavpur-II	1920	
7	Major RLI	20	Sankrail	1200	
8	Major RLI	16	Nayagram	960	

RLI Structures (Handed over) are as follows:-

Sl.No.	Type of structure	Nos.			Name of Block	CCA in Ha	Remarks
		Major	Midi	Mini			
1	RLI	4	3	0	Jhargram	360	
2	RLI	2	5	3	Jamboni	380	
3	RLI	2	2	0	Binpur-I	200	
4	RLI	1	6	2	Binpur-II	340	
5	RLI	6	4	4	Nayagram	600	
6	RLI	4	0	0	Sankrail	240	
7	RLI	1	4	3	Gopiballavpur-I	280	
8	RLI	7	3	0	Gopiballavpur-II	540	

Plan for Management:-

- As all the RLI Schemes (Govt. Owned) are operated by the Operator cum Mechanic (OCM)/Assistant Operator (A.O.) who are posted in the above noted blocks under the BDOs of the District can be utilized for any disaster like situation.
- The 4 nos. Assistant Engineer (AM) / (AE) of 4 nos. Sub Division and the Executive Engineer (AM) Midnapore (AM) Division can be contacted for the disaster management. Their Phone Nos. are as follows:-

Designation	Phone nos.
Assistant Engineer(AM) Jhargram-I(AM) Sub Division	03221 255163
Assistant Engineer(AM) Jhargram-II(AM) Sub Division	03221 255163

14. Disaster Mitigation Plan of Agri-Irrigation

Minor Irrigation plays a vital role in the agricultural development of the state. Both surfaces as well as ground water are being harnessed for implementation of M.I.Schemes in various parts of state. However, surface water is more significant in those parts where ground water availability is less favourable.

Designation	Contact details
Excutive Engineer, Agri-Irrigation, Jhargram	03222-275465

Ground water schemes of this department are relevant for post flood restoration work during 'Rabi season' in the event of flood.

15. Disaster Mitigation Plan of Fire Brigade, Jhargram.

The Jhargram Fire Station of West Bengal Fire and Emergency Services under Jhargram district had been inaugurated on 17 January 2001. It consists of single and two storied building with the provision garage of two fire pump station. Coverings area approx 50 katha with different types of tree surrounding it. Two number of sub-mersable pumps are provided to fill the fire vehicle tanks.

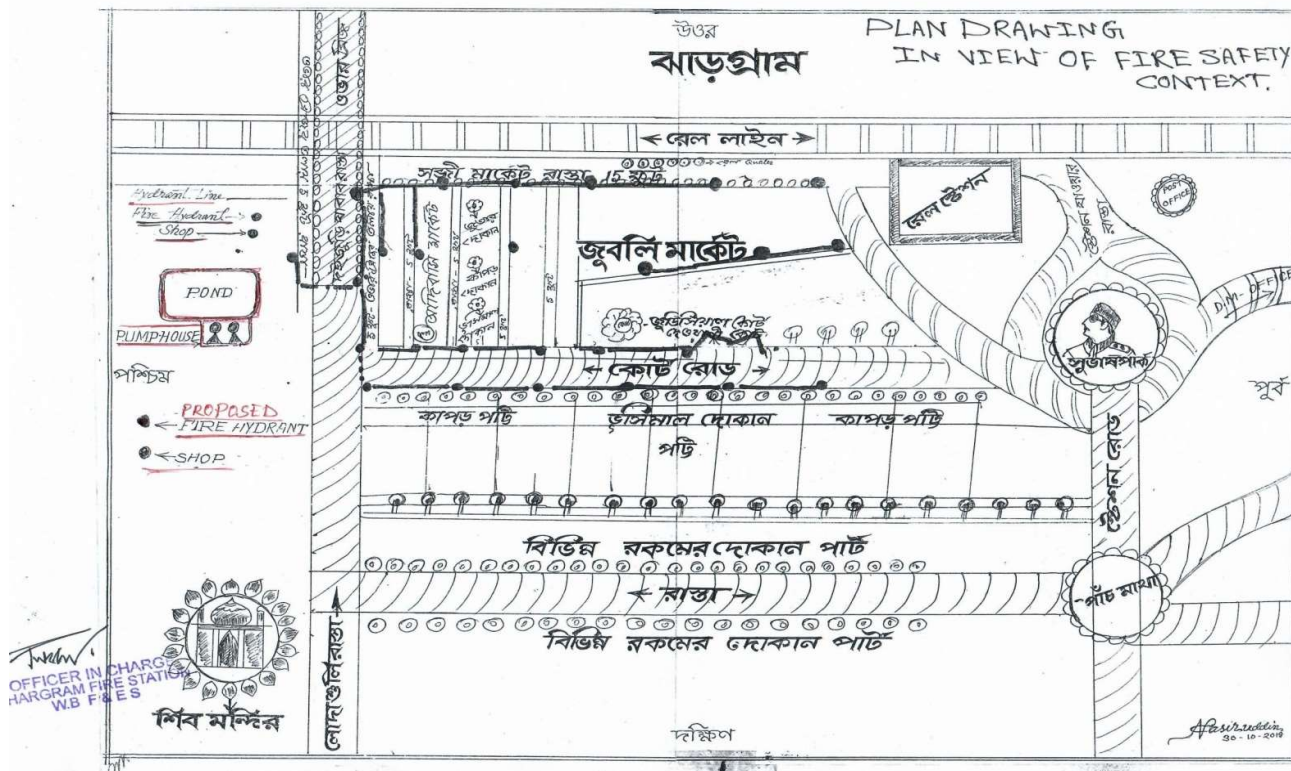
According to principle of work it has many type of movement which can be mentioned as:-

- Fire and rescue call attending and receiving the call over telephone, running caller, police and political representative.
- The stand by performance such as Helipad duty, Puja, Cultural programme, Political and administrative meetings of VVIP's.
- Attending fire training and safety programme on School, Collage, Industries and Hospital
- Inspection of high rise building and factory industries Hazard oriented
- To assist the police service for water browsing and application of water pressure Jet.
- The increasing of industries, Organisation, and educational system the requirement of fire turn out are increasing the acute shortage of man power specially the officers and F.E.O.D (Fire Engine Operator cum Driver) who drive the fire turn out at the fire ground. One of the major issue regarding the rescue of domestic animal and sometimes along with the owner who fail the within of misshap trapped due to misshap of falling into the open well/ uncovered reserver and even septic tank.

Evacuation Plan of Jublee Market under Jhargram Municipality drawn by the Fire Brigade, Jhargram:-

The Jublee market, one of the most important market of Jhargram of which east side is station road, five points crossing, western side is Lord Shiba Temple and road to go Dahijuri, North side is Jhargram Court and a road to go lodhasuli. It is the only market where a lot people bring vegetables fish and other essential commodities and as the railway connectivity is available, the importance of this market is increasing day by day.

Presently, this is no arrangement for fire extinguisher in the market but if there is any accidental fire, Motor Pump Vehicle (Fire water tender) may easily enter into the market through the road nearby Jhargram railway Station.



16. Disaster Mitigation Plan of Agriculture Department

Jhargram District is located in the south- western part of West Bengal between 21°52' and 22°48' North latitude and between 86°34' and 87°20' East longitude. The geographical area of the District is 302439 ha. It is bounded by Bankura & Purulia Districts in Northern side; Mayurbhanj District of Orissa in the Southern side & Singhbhum District of Jharkhand in the Western side.

The weather is extremely humid & tropical. Temperature can reach as high as 46°C in the hot & dry months of May & June but can plummet to 4°C in the chilly nights of December & January.

The District comprises of one sub-Division, Jhargram consisting of 8 Blocks.

More than 80% of the total population lives in rural areas of the District & Economy depends on Integrated Agriculture & small scale industries.

The District possesses diversified ecosystem having different vegetation, soil types, climatology & geomorphology.

The important rivers like the Kangsabati, the Subarnarekha, the Dulang, & their tributaries flow through the District & enrich the cropping system by depositing fertile loam or sandy loam soil during rainy season.

The major crops grown in the District are Aus, Aman & Boro paddy, Wheat, Potato, Mustard, Til, Groundnut, Vegetables, Pulses, Watermelon, Maize, and Sugarcane etc.

Net cropped area of the District is about 168448 ha. Gross cropped area 227921 ha having 135% cropping intensity. The District faces both flood & Drought & sometimes one is followed by another in a same year. Sankrail, Gopi-I, Gopi-II & Binpur –I have flood prone areas of about 2120 ha. As well as most of Blocks have Drought prone area of about 114099 ha. The average rainfall of the District for last 10 years is 1609.46 mm. but it is the experience of the people that the District faces scattered & uneven distribution of rainfall almost in every year & the monsoon showers come always in late.

The Disaster Management plans in Agricultural sector means the contingent crop planning in Kharif crops during Kharif season to meet the unforeseen contingencies like flood, drought etc. during the growing season of crops.

Agriculture largely depends on nature & contingent crop planning is an integral part of agricultural production planning. The objective of the contingency crop planning is to provide ways & means to tackle the situation due to flood or drought or any other natural calamity.

To combat the situation whatever it may arise due to flood or drought the following action plan is to be adopted:

To overcome the adverse effect of Flood

Actions to be taken by farmers.

A. Early / Mid season Flood:-

1. Staggered sowing of paddy seed in seed bed at 10 days interval for at least 500 ha.
2. A place of higher elevation to be chosen for raised seed bed.
3. Cultivation of flood tolerant Swaran Sub-I Variety to be followed
4. To reduce the detrimental effect of sand deposition in cultivated land, sufficient organic matter is to be applied.
5. If sand deposition is high, it is to be removed manually or mechanically.
6. Use of drum seeder in case of late sowing.
7. Double transplanting of Paddy will be very much helpful specially after receding flood water during early and mid season flood.
8. In case of late transplanting five to six numbers of seedling per hill to be transplanted and basal dose of Nitrogen to be increased.
9. Gap filling with available nursery or by splitting the tiller from the surviving hills.

B. Late Flood

1. Where there is no time for rice cultivation-
2. Kalai (Variety-Sarada, Goutam, Sulata etc.) may be grown in the post-Kharif season.
3. Toria, yellow sarson, lentil, gram, etc. may be grown early in the Rabi season.

Measure to be taken by the Agriculture Department.

a) Requirement of seed and fertilizer kit to meet up the contingent need during Kharif 2021-22

Sl. No.	Seed / Input	No. of Kits	Quantity (M.T)	Money value(Rs. In lakh)	Area to be covered (ha)
1	Paddy (Swarna Sub-I) @ 10 kg	20000	200	96.00	4000
2	Fertilizer (N.P.K) @ 10 kg	20000	200	50.00	4000
3	Kalai @4 kg	2250	9.0	11.01	300
Total				160.01	8300 ha

b) Staggered Seed Bed at Govt. Farm - 8 ha

c) Storing of straw at Govt. Farm for feeding the cattles- 5 M.T

To overcome the adverse effect of Drought

A. Actions to be taken by the Agriculture Department -

- a) Joint monitoring by District level officers of the Department of Agriculture, Irrigation & Waterways and WRI&D to be done to look into the real situation and to find out the ways for supplying Irrigation water from all Irrigation sources and ensuring it at grass root level in the blocks.
- b) Water harvesting structures like pond, dug well etc. to be excavated for storing rain water by the departments.
- c) Providing pump set to the farmers from ongoing Departmental Scheme.
- d) Requirement of Seed and Fertilizer Kit to meet up the Contingent need for Rabi / Boro during 2022-2023**

Sl. No.	Seed / Input	No. of Kits	Quantity(M.T)	MoneyValue (Rs. in lakh)	Area to be covered (ha)
1	Paddy (Sahabhagi Dhan)	10000 @ 10 kg each	100	48.00	2000
2	Fertilizer (N.P.K)	10000 @ 10 kg each	100	30.00	2000
3	Mustard	3200 @ 1kg each	3.2	3.4	426
4	Lentil	10000 @ 4 kg each	4.0	6.28	135
5	Sunflower	1000@ 1kg each	1.0	1.0	145
6	Khesari	1000@ 4kg each	4.0	4.0	135
7	Ground Nut	3200@ 15kg each	48.0	58.16	400
8	Moong	3200@ 4kg each	12.8	20.0	534
Total-			273	170.84	5775

B. Actions to be taken by the farmers:

- a) For harvesting rain or runoff water, earthen bunds are to be constructed around the individual plot.
- b) Application of organic manure to increase the water holding capacity of the soil.
- c) Staggered sowing of rice seed in seed bed at 10 days interval.
- d) Cultivation of Sahabhagi Dhan to be followed.
- e) Closer spacing with higher number of seedlings per hill is to be practiced.
- f) Direct seeding of rice through zero/minimal tillage machine.
- g) Cultivation of Arhar, blackgram, groundnut & maize or mixed cropping of maize & arahar in high lands.
- h) Mechanical weeding in rice field & use the uprooted biomass of weeds as soil mulch or use other mulching materials like straw in rice field.
- i) Not to apply Nitrogenous fertilizer in the soil to restrict weed growth. Foliar spray of Urea or DAP @ 1-2% may be applied at critical growth stages of the crop.

Action to be taken to combat Natural calamity for compensation of crop damage:-

1. **SDRF** - Distribution of cheques for compensation of crop damage (above 33%) to affected Farmers are be conducted by Deptment.

2. Bangla Fasal Bima Yojana –

(a). Arrangements are being made to bring most of non loanee farmers under BFBY like previous year by campaigning

(b).Awarenes campaigning for issuing new KCC & reviving the dormant KCC of the farmer so that most of the loanee farmers of KCC holder come under BFBY automatically.

3.Krishak Bandhu (AI)- Awareness Programme for registration of the farmers in Krishak Bandhu (Assured Income) Scheme in going on.

Contacts Nos. & email ID of officials:

1. D.D.A (Admn) , Jhargram.- ddaadmnhargram@gmail.com, 9474507117
2. Kalyan Ch. Besra, ADA(Admn),Jhargram-adajhargram@rediffmail.com , 9734825414, 03221-255150
3. Subodh Ch. Mandi, ADA (PP), Jhargram 9734627672
4. Sujit Manna. ADA(SM), Jhargram-- 9434366704,
5. Ashis Mahapatra, ADA(SM), Jhargram, 9434667977
6. Sukumar Kisku, ADA (Information), Jhargram, 8436842202
7. Nayagram- Baligeria, adanayagram@gmail.com8759807887
8. Sankrail- Rohini,adasankrohini@gmail.com, 9932972677
9. Jamboni- Gidhni,adajamboni@gmail.com, 8617568944
10. Binpur-I, Lalgargh, adolalgarh@gmail.com, 7679822082
11. Binpur-II, Belpahari,adabinpur2@gmail.com, 9735295266
12. Gopi-I, Chhatinasole,adagopi1@gmail.com, 7044272277
13. Gopi-II, Tapsia,adagopi2@gmail.com, 9775621905

17. DESCRIPTION OF THE BLOCK IN JHARGRAM DISTRICT

17.1 JHARGRAM BLOCK

GENERAL INFORMATION

Block head Quarter	Jhargram
Distance From District Quarter	02 km
Geographical Area	789.50 Sqkm
Gram Panchayat	13
Mouza	604
Inhabited Mouza	492
Gram Sansad	129
No. of House hold	39322
Population (2011 census) :-	
Total population	172361
Male	87455
Female	84906
S.C. Population	20698
S.T. population	35542
No. ITDP mouza	173
Literacy Rate	65.36 %
No. of Post Offices	16
No of Bank Branches	14
No. of Co-operative Society	92

AGRICULTURE

Total Rural Families	36876
BPL Families (2002)	13380(44.00%)
Small Farmer	6670
Marginal Farmer	12875
Land Use (in Hect) :-	
Net area under cultivation	26424
Area under pasture, orchard etc.	1760
Cultivation Waste land	460
Forest land	15400
Residual land	300
Land reforms (area in Hect) :-	
Total land vested	10945 Hect.
Vested land distributed	6347 Hect
No. of vested land beneficiary	9941 Nos.
Patta Holder	9941 Nos.
Bargadar	102 Nos.
Kisan Credit Card	2238 Nos.
Old age pension	854 (@ Rs. 750.00 per head)

HEALTH FACILITIES

No. of B.P.H.C	1 (8 beds)
No. of P.H.C	5
No. of sub-center	32

INDUSTRY

No. of SSI units Registered	315
No. of person engaged	2225
P.M.R.Y. 2005 – 06	40
Major Handicrafts	344
No. of Petrol Pump	05

DRINKING WATER SUPPLY

Spot sources	900 (T.well) + 2202 (well)
No. of mouza covered	485 (exclude.Muni-25)

IRRIGATION

Total irrigated Area	16,790
Irrigation facilities (in hec)	
Canal (Kangsabati Branch)	5,500 (Kharif)
Tank	92 (1900 Ha.)
RLI	24 (305 Ha.)
DTW	7 + 9 (M) – (200Ha)
STW	810 (4000 Ha.)
Other (Bandh, Well etc.)	4885 Ha.

EDUCATION

Educational Institutions :-	
Primary school	199
Teacher	524
Students	19201
No. of SSK	113
Anganwadi center	196
Secondary :-	
Junior High school	21
High	21
Higher secondary	18 nos. H.S. out of 21 nos.
Uper Primary	
No of M.S.K.	9
College	2 + 2 = 4 Nos.

POWER

No. Of Mouza electrified	461
No. Of pump energized	
Total road length (in Km)	364.40

ROAD

B. T.	105 K.M. + 30 KM NH-6
GR/ M	280 KM
Earthen	74 KM

1. No. of Lodha family	1988
2. Total Lodha Population	7276 Male – 3748 Female – 3528
3. Dwelling House	341
Land purchase for Lodha family	111 F, Area- 39.12

FOREST

Area covered by social forestry	
Forest land	8150 hector
Patta distributed	219 nos. beneficiaries 62.6865 acre of land

SGSY

No. of SHG formed	1820
No. of SHG opened bank account	1820
No. of members / family involved	18200
No. of Group passed grade –I	1390
No. of Group passed grade –II	530
No. of group credit linked	170

LIST OF FLOOD PRONE MOUZA

Name of the Block: - Jhargram

Name of the mouza with JL No that are severely flood prone	Name of the mouza with JL No those are less severely flood prone
Baida (490) , Metal(495) , Dumuria(496) , Gourgram (447) , Katasole (448) , Dahipal(494) , Kendboni(499) , Brahamttar(492) , Amjhuku(488) , Bandhgora(452) , Shyamsundarpur(439). , Jamuria , Dharampur(735) , (Khas Jangal) ,Malikhal(514) , Bamunibandh(512) , Barakuria , Dhengaum(534) , Joypur(533) , Bedhakala(517) , Durgapur(519) , Indradanga (518) , Lalbag(525) , Amratara(524) , Garmohan(526) , Amdoi(608) , Rangrakola(609) , Pakuriapal(607) , Sukjora (605) , Bara Sukjora(603) , Muraboni (872) , Baita gobindapur(891) , Taldangra(790) , Asti (798) , Madhabpur(802) , Basketia (804) , Barkala(806) , Feko (805) , Salgur(854) , Kannadoba(853) , Akshrasole (510) , Dahijuri (861) , Gokulpur(862) , Shyamsundarpur(439) , Joypur(487)	Panchakhali (387) , Murgidihi(373) , Bindukata(374) , Talmetal(375) , Dakhinsole(425) .Joynagar(377)., Khalsuli(616) , Naharia (944) , Golbundhi (693) , Chottogohira(945) , Keshabhola (509) , (Katchara Damodarpur(505) , Chhanapara (531) , Bhetli (532) , Srikrishnapur (516) , Sikharbhangha (523) , Asanbone (491) , Benadi (602) , Bhiringpur (610)

GP Wise Flood Shelters :-

SI	Name of the	Name of the Flood Shelter	Condition of the Shelter	
1	Radhanagar	Sevayatan High School	7001831840	Good
		Sevayatan Girls School	8900696018	Good
		Dakshinsole Pry. School	9733676498	Good
		Jorakhali Pry. School	9732797502	Good
2	Bandhgora	Bandhgora Anchal Vidyalay	8918367695	
		Baida Pry. School	9734687632	
		Narayanpur MSK	8972859089	
		Bandhgora GP Office	9932765941	
3	Sapdhara	Dholkat Pukuria Pranabananda Vidyamandir	9647284832	Very good with all
		Dhobadhobin Jr. High School	9800922439	Very good with all
		Sapdhara MSK	8670442093	Very good with all
4	Nedabahara .	Nedabahara GP Office	9932415174	Very good with all
		Nedabahara Pry. School	9002277294	Very good with all
		Nedabahara Community Hall at Ghatiduba	9635249933	Good
5	Salboni	Salboni G.P. Office	8016257726	
		Bikash Bharati High School (HS)	8250797203	
		Garrow Pry. School	9932310657	Good
6	Manikpara	Joypur Pry. School	8145986735	
		Muraboni MSK	9474616956	
		Manikpara High School (HS)	8972331199	
		Manikpara GP Office	8116144211	
7	Sardiha	Indradanga Junior High School, GP Office	9051400514	Good
		Garmohan Pry. School	9800385855	
		Kismat Balijuri Pry. School	9734528208	
		Iswar Chandra MSK (Julirbandh)	6295287491	
8	Chubka	Khalseuli High School	9474714360	
		Chitalboni Flood Shelter		
9	Dudhkundi	Chowkichati Pry. School	9775523737	
		Bardanga Jr. High School	8617884543	
		Sagarbhanga Pry. School	9775090724	
		Dudhkundi Gram Panchayat Office	7478350582	Development
10	Lodhasuli	Naharia SSK	9564135224	Good
		Golbandi Pry. School	9635478749	
		Chhotogohira Pry. School	9933941610	
		Aguibani High School/Ektal D.M High	9933563559	
12	Patasimul	Baitagobindapur Pry. School	9647497894	
		Patasimul SC High School	9733511309	Good
13	Chandri	Asti Pry. School	9734300837	Good
		Salgura Pry. School	8067307006	Good
		Aushpal Pry. School	9932786541	Good
		Chandri CS High School	9433361435	Good
		Petbindhi JK High School	9932782188	Good

17.2 Sankrail Block:

BLOCK PROFILE

Block HO	
Distance from Dist. HQ (K.M.)	45 K.M.
Geographical Area (in Sq. K.M.)	275.60 K.M.
No. of Gram Panchayats	10
No. of Gram Sansad	87
No. of Villages	287
No. of depopulated villages	39
POPULATION (2011 census)	115502
Male	58543
Female	56959
Total SC	20914
Total ST	29938
Total Gram Sansad	87
Total Household	25744
No. of BPL families	12542
No. of Lodha Household	238
No. of Lodha Population	948
Rainfall (In Millimeter)	1600MM
Depth of Water Table	13.5Mtr.
Depletion of Water Rate	50 cm/month
LAND USE	
Net area under cultivation	21180 Hec.
Area under forest	1620 Hec.
Area under orchard	170.40 Hec.
Area under waste land	420 Hec.
No. of villages Hats	21
No of Bank branches	10
No. of Cattle	56389
No. of crossbred cattle	14446
Area under Pisculture	252.304Hec.
Persons engaged in Fishery	12338
Spot sources for drinking water	2081
Villages covered under pipe water supply	5
Education	
No of Schools	282
No. of College	1
Mouza Electrified (in nos)	280Nos.
Length of roads	547 K.M.
Morrum	266 K.M.
Black top	201 K.M.
Concrete Road	80 K.m
Self Help Groups	1012
1(one) No. of Relief Godown	Block Head Quarter

Emergency contact number

List of Country Boat owners				
SI No	Name	Address	size of boat	Contact no.
1	Alok Bhuniya	Naihat	Small	9679758267
2	Srikanta Dolai	Dherachara	Small	7407789868//8001276101
3	Tapeswar Dolai	Dherachara	Small	7477429110
4	Sisir Dolai	Dherachara	Small	8597102729
5	Khagen Dolai	Dherachara	Small	9635510165
6	Haradhan Dhauria	Dherachara	Small	9800291985
7	Guin Das	Kalrui	Small	7718449264
8	Anada Dalai	Kalrui	Small	8159867451
9	Paltu Dhauria	Kalrui	Small	7364920935
10	Shaktipada Badhuk	Rohini	Small	9932024977
11	Srimanta Badhuk	Rohini	Small	8670645721
12	satyaban badhuk	Rohini	Small	9732464304
13	kamalesh Bishui	Rohini	Small	8670200955
14	Sunil Badhuk	Rohini	Small	8670303702
15	SK Chanu	Hanumanta Neguria	Small	9564324492 / 7935604719
16	Ranjit Manna	Ragra	Small	9002703940
17	Ashok Manna	Ragra	Small	8670771631
18	Bhagyadhar Manna	Ragra	Small	7585912885
19	Sadananda Bishui	Ragra	Small	8145540288
20	Jagatballav Bishui	Gordhara	Small	7319470914
21	Sudhanshu Bishui	Gordhara	Small	9800560037
22	Satyajit Bishram	Gordhara	Small	9932745692
23	Bankesh Bishram	Gordhara	Small	8972162477
24	Bablu Manna	Gordhara	Small	8972486570

List of Vehicles/Tractors/Trucks Owners

SI No	Name	Contact No
1	Bilas Jana	9932540970
2	Avijit Dey	9932784522
3	Sanjit Kar	9732965795
4	Kousik Patra	9933455302
5	Samaresh Patra	9932881653
6	Soumen Maity	9153090233

List of Saw Mill owners

SI No	Name	Place	Contact No
1	Aswini Datta	Ranjitpur	9932960578
2	Samir Kumar Mahapatra	Rohini	9733736632
3	Dulal Chandra Ghosh	Andhari	9734802253

List of Veterinary Hospitals & Doctors

Sl.No.	Name of the Veterinary Hospitals	Name of the Personnel	Contact No.
1	Block Animal Health Centre, Rohini	1) Dilip Chakraborty, BLDO	9475233768
		2) Dr. Mihir Ranjan Dalapati, V.O, BAHC	9732859861
		3) Sri Gobinda Sarkar, V.F.S	9609409568
2	Addl. Block Animal Health Centre, Kultikri	1) Dr. Barun Biswas, V.O, A.B.A.H.C	9932923464
		2) Sri Arpan Das, LDA	9002192744

TELEPHONIC COMMUNICATION NUMBERS OF DIFFERENT OFFICES

Sl.	Name of Office	STD	Numbers	FAX No.
OFFICES				
1.	B.D.O., Sankrail	03223	268248	7719364427
2.	Sabhapati, Sankrail	03223	268267	8116198734
3.	Pradhan, Ragra		9876543210	
4.	Pradhan, Andhari		8967250673	
5.	Pradhan, Rohini		8972513929	
6.	Pradhan, Sankrail		9932795477	
7.	Pradhan, Kultikri		9547318085	
8.	Pradhan, Laudaha		8001960656	
10	Pradhan, Chhatri		7029388349	
11	Pradhan, Khudmorai		9775247343	
12	Pradhan, Pathra		7076627500	
13	Pradhan, Dhanghori		8348809722	
14	BL & LRO, Sankrail	03223	265204	
15	C.D.P.O. Sankrail	03223	265568	
16	BMOH, Sankrail	03223	265234	
17	ADO, Sankrail			9932972677
18	O.C. Sankrail Police Station	03223	265237	9083269617
19	S.I. of Schools Rohini / Sankrail	03223	268264	9681106332/8972708359
HIGH / HIGHER SECONDARY SCHOOL				
1.	Rohini C.R. D High School		9474625044	
2.	Ragra R.N. M Academy	03223	205173	
3.	Kultikri S.C. High School		9732527193	
4.	Laudaha Vivekananda High School		9432553981	
5.	Andhari MBS High School		9775194325	
6.	Rohini Girls High School		9732541458	
7.	Kultikri Girls High School		9775514135	
8.	Keshiapata G.M. High School		9434416278	
9.	Chhorda High School		9932825722	
10.	Dhagari High School		9732755208	
11.	Kuldiha Saradamayee S.C High School		9647073864	
12.	Dudhkhundi S.c High School		9153087732	
13	Pathra Joy Chandi High School		8768532360	
14	Banpura Taraknath High School		9732940776	
BANKS				
1.	S.B.I. Rohini Branch.	03223	268250	
2.	S.B.I. Chunpara Branch.	03222	270435	
3.	S.B.I. Keshiapata Branch.	03223	265233	
4.	P.N.B. Ragra Branch.	03222	270467	
5.	P.N.B. Kukrakhupi Branch.	03222	270515	
6.	P.N.B. Kultikri Branch.	03223	265429	
7.	M.G.B. Kultikri Branch.	03223	265015	
8.	B.O.I Bakra Branch.	03222	203417	
9.	V.C.C Bank Ltd, Rohini Branch.	03223	268312	
10.	Jhargram Co-op Agril. Rural Dev. Bank	03223	268503	
POST OFFICES				
1.	Rohini, Sub Post Office	03223	268230	
2.	Kultikri Sub-Post Office	03223	265220	

Contact Numbers of Different Offices Under Sankrail Dev. Block.

<i>Sl. No.</i>	<i>Name of Offices</i>	<i>Contact No.</i>	<i>Fax</i>	<i>Remarks</i>
1	Dhanghori GP	Pradhan No. –8348809722 Upa-Pradhan-8967796285 E.A. – 9732617009		
2	Ragra GP	Office – 03222-205121 Pradhan – E.A. - 9775147975		
3	Andhari GP	Office - 03223- 268299 Pradhan – 8967250673 Upa-Pradhan-7718436346 E.A.- 7872222475		
4	Rohini GP	Office - 03223-268328 Pradhan –8972513929 Upa-Pradhan-9775168955 E.A. - 9932073204		
5	Chhatri GP	Pradhan-9775385848 Upa-Pradhan-7319324815 E.A- 9153254589		
6	Pathra GP	Pradhan –7076627500 Upa-Pradhan-9800341765 E.A. - 9800646220		
7	Khudmorai GP	Pradhan –9775247343 Upa-Pradhan-9800341765 EA. - 7872559288		
8	Sankrail GP	Office – 03223-265108 Pradhan – 9083990931 Upa-Pradhan-9932225792 J.A. - 9647235487		
9	Kultikri GP	Office – 03223-265231 Pradhan – 9547318085 Upa-Pradhan-9932181019 E.A. - 9932886982		
10	Laudaha GP	Office – 03223-265048 Pradhan – 8001960656 Upa-Pradhan-8116420722 E.A. - 9933031391		

Names of Rivers and Khals under this Block:-

1. Subarnarekha (G.P.No. 2, 3,4,10.)
2. Dulung (G.P.No. 2, 3,4.)
3. Keleghai (G.P.No. 6,7.)
4. Bansi Khal (G.P.No. 2, 3.)
5. Kusmi Khal (G.P.No. 9.)
6. Ghunia Khal (G.P.No.1,4,5.)

Identification of flood prone villages and rescue shelters.

Name of G.P. with Phone No.	Name of flood prone villages	Rescue Shelters with Ph. No.
G.P. No.1 Dhanghori Ph. No.	Kubda, Dahipal, Khamarmahuli, Anandapur, Sirsi, Pachakhali, Krishnapur.	Khamarmahuli Pry. School. Kubda Pry. School. Anandapur Pry. School.
G.P. No.2 Ragra Ph. No.03223-205121	Telkand, Kutchladari, Amladari, Nepura, Simulia, Haripal, Nekrasole, Itamaro, Bagansai, Kathuapal.	Nepura Flood Shelter Ragra High School Ph.No. 03222-205173 Telkand Pry School.
G.P. No.3 Andhari Ph. No.03223-268299	Asti, Baincha, Salturia, Garhdhara, Baharadari, Upar Kathmundi, Sapua- Sarulia-Nikasi, Tentulia, Dhanghori, Birdahi.	Dakshindaria Flood Shelter, Baincha Flood Shelter Andhari High School Ph.No. 9932277472 Andhari Pry. School Baincha Pry.School.
G.P. No.4 Rohini Ph. No.03223-268328	Hanumanta Neguria, Harekrishnapur, Sripur, Salboni, Dhitpur, Andhari, Bahadurpur, Kusturia.	Rohini Flood Shelter, HanumantaNeguria, Rescue Centre, Chheliasingha Rescue Centre Rohini High School Ph.No. 03223-268238 Sankrail Block Dev. Office at Rohini.
G.P. No.5 Chhatri Ph. No.	Chhatri, Murakati, Chunpara, Murunia.	Chhatri Pry. School
G.P. No.6 Pathra Ph. No.	Rajgram	Patharkati Pry. School
G.P. No.7 Khudmarai Ph. No.	Gosthakali, Sirisboni.	Chhorda High School Ph.No. 9932825722 Dumuria Sirishboni Pry. School.
G.P. No.8 Sankrail Ph. No.03223-265108	Gobindapur, Rajbandh.	Gobindapur Pry. School Ph. No. 9733653717 Chirakuti Pry. School.
G.P. No.9 Kultikri Ph. No.03223-265231	Charar, Olda, Amjhatia.	Kultikri High School.
G.P. No.10 Laudaha Ph. No.03223-265048	Rampura, Dahabarh, Dherachhara, Naihat, Dehaganj, Kalrui.	Laudaha Rescue shelter Rampura Pry. School Laudaha High School Kalrui Pry. School

Suitable places for landing of Helicopters:-

1. Rohini High School Ground, J.L. No. 252
2. Keshiapata Ground, J.L. No. 196
3. Chheliasingha Ground (Near Rohini Bus Stand)

Name of M.R. Distributor / Authorised GR Dealer :-

1. Sri Ashis kumar Khatua (M.R. Distributor) At & P.O.- Kultikri, Contact No. – 9933588013
2. Sri Byomkesh Sahoo (Authorised G.R. Dealer), At& P.O.- Rohini, Contact No. – 993292150

Major disaster occurred in last year 2020-A severe cyclonic storm “AMPHAN” occurred at our Block and as a result 03 nos. houses fully damaged, 10 nos. houses severely damaged and 220 nos. houses partly damaged. Total Rs.13,60,000 /- has been paid to the beneficiaries as H.B Grant @ Rs.5000/- for partly damaged houses and Rs.20000/- for fully and severely damaged houses

Plan for Mock drill and training- a mock drill on rescue operation will be conducted by civil defence volunteers and a training program will be conducted on “Disaster Risk Reduction” with Gp staff, Local NGOs and all line dept. by this financial year if the covid situation be normal. The details of financial estimation will be submitted before the program and will be organized with the guidance and approval of District Disaster Management dept,

Plan for procurement of machinery/instruments for the next year

1. Hand mike -01 set
2. Electrical Chain Saw-01 pcs

Name of the PRI members with contact no.

Sl No.	Name	Designation	Contact No
1	Bhupen Kalandi	Savapati	8116198734
2	Darbariya Kisku	Saha Savapati	9800550097
3	Rekha Mahata	P.S Member	8436308688
4	Saheb Manna	P.S Member	8017269903
5	Mamata Kamila	P.S Member	9733656092
6	Anjali Dalai	P.S Member	9547563831
7	Srinath Hembram	P.S Member	9064543034
8	Kabita Mahata	P.S Member	
9	Mamata Nayek	P.S Member	7047533945
10	Nimai Nayek	P.S Member	8167804907
11	Pratima Das	P.S Member	9002842693
12	Madan Das	P.S Member	8145522341
13	Minati Mahata	P.S Member	9002198889
14	Kamal Kanta Routh	P.S Member	9609068437
15	Rukmini Mahata	P.S Member	8768832884
16	Sasanka Hatui	P.S Member	8373871909
17	Bipendra Nath sing	P.S Member	7029230484
18	Putra Sing Murmu	P.S Member	6295711095
19	Simon Tudu	P.S Member	9800478131
20	Debasish Ghosh	P.S Member	9064743041
21	Bina Singh	P.S Member	9800196155

List of Vehicles/Tractors/Trucks /JCB Owners

Sl No	Name	Contact No
1	Bilas Jana	9932540970
2	Avijit Dey	9932784522
3	Sanjit Kar	9732965795
4	Kousik Patra	9933455302
5	Samaresh Patra	9932881653
6	Soumen Maity	9153090233

List of saw mill (Tree Cutter/Axe/Chain Saw) owners

Sl No	Name	Place	Contact No
1	Aswini Datta	Ranjitpur	9932960578
2	Samir Kumar Mahapatra	Rohini	9733736632
3	Dulal Chandra Ghosh	Andhari	9734802253

Sl No	Name of the Flood Prone Village	Rescue Centre or Flood Shelter or School Building with Contact No.of key holder
1	THENGAMARA	9679910443
2	MUKUNDAPUR	9547318085
3	TARADIHA	8001747501
4	CHARAR	7679596332

1. List of office Staff in Control Room and Volunteers of Flood Prone Area.

Sl. No.	Name of the Staff	Contact No.
1	PRADIP DEY (E.A)	9932886982
2	SATYABRATA GIRI (Secretary in charge)	9733982380
3	SASANKA SEKHAR PATRA (Sahayak)	9735509969
4	MANIK GHORA (G.R.S)	9564479365
5	ATASHI DUTTA (VLE)	9083969257
6	KAMALESH MAHATA (STP)	9732914436
7	SUJATA RANA (JeebikaSevak)	89725655712
8	AMIT MANNA (Tax collector)	9679171107
9	Dr. SUBHOBRATA PALOI (HMO)	8116850466
10	ASHOK SAHOO (Casual Staff)	7865048563
11	MRINMOY KUILA (NS)	

Sl. No.	Name of the Flood Prone Area	Name of the Volunteers(10-15 nos)	Contact No.	Name of the Group Leader with Contact No.
1	Mukundapur	Nityanandaghosh	8944867349	
2	Baligeriya Est	Romen dash	9933825453	
3	kultikti	Kushikhatui	7602094737	
4	Kultikri	Amiya mahapatra	9474348095	
5	Thegamara	Tamal Pahari	9679910443	
6	Gourbera	Santanukumar das	6296792619	
7	Aushabandi	Banshimandal	7029083799	
8	Mandar	Samiranpradhan	6295405526	
9	Olda	Sonadtudu	9635310190	
10	Nayagan	Rabi soren	8509327808	
11	Charar	Laxman Shit	9679339512	
12	Jangalkurchi	Sirajali	9609204084	
13	Lata	Dabashishpatar	9547895418	
14	Fulboni	Chanduramsoren	7029058271	
15	Ahira	Prasenjit sing	8670537355	

2. Resource analysis 01

i	Storage facility with capacity	NO
ii	No of cyclone/Flood Centre/Community Center	NO
iii	Earth moving and road cleaning equipments	NO
iv	List of NGOs & Volunteers or Skilled Retired Personnel with contact no.	NO
v	List of Trained Volunteers in rescue/first aid	
vi	Power supply availability in cyclone or Flood Centre or Community Center	NO
vii	List of owners mentioning address and contact no. of boat/vehicle/tractor/truck/jcb etc.	NO

3. Resource analysis 02

i	List of medical centers and medical personnel with contact no.	Up-Sasthakendra at kultikri,lata
ii	List of veterinary hospitals & personnel with contact no.	
iii	List of PRI members with contact no.	
1	SUSAMA KISKU PATAR	9547318085
2	ASISH DASH	9932181019
3	MITHUN NAYEK	8967987994
4	SURENDRATUDU	8001747501
5	GITA SHIT	7679596332
6	ARATI MANDI	7679574967
7	USHA SING	8348833580
8	RABIBARI SOREN	7679571750
9	SIMAN TUDU	9800478131
10	PUTU SING	6295711095
v	Construction agency/ supplier of housing materials	
vi	List of owners of grocery shop with contact no.	
1	Ranjitkundu	8972565700
2	AsimDey	7866002382
3	Paresh senapati	7551029168

4. Preparedness measures

i	Hazard & sector specific preparedness	N/A
ii	Awareness activities	N/A
iii	Preparedness activities of line department	N/A
iv	Capacity building plan and activities	N/A

17.3 Gopiballavpur-I Block

Block Profile

i)	Total geographical area of the block is about 275.8 Sq.Km.		
ii)	Distance from District Head quarter 45 km (Jhargram)		
iii)	Distance from nearest Railway Station 45 km (Jhargram).		
iv)	Police Station Gopiballavpur.		
v)	Total population (as per 2011 census) - 108256		
vi)	Male population- 55700.		
vii)	Female population - 52552		
viii)	Other population - 04		
ix)	SC population,	MALE	: 10706
		FEMALE	: 10217
		TOTAL	: 20923 (21%)
x)	ST population,	MALE	: 16740
		FEMALE	: 16137
		TOTAL	: 32877 (35%)
xi)	No. of House Hold	: 16870 nos	
xii)	BPL families (Survey 2002)	: 1338 nos	

Health

Block Primary Health Centre at Gopiballavpur	:	1 (One)
No. of Primary Health Centre	:	3 (Three)
No. of Sub-Centres	:	18(Eighteen)
Block animal Health Centre	:	1(One)
Addl. Animal Health Centre	:	1(One)
Animal Development Aid Centre	:	04 (Four)

Average rainfall in the year and month wise average rainfall

Year	Avg. rainfall (mm)	Average rainfall in month (mm)				
		June	July	August	September	October
2018	1508	148.4	356.4	234.6	189.8	35.8

Flood Prone Zone

Name of GP	Flood prone zone
Satma	: Satma, Jalbenti, Banshidharpur, Dahamunda, Ghargaria etc.
Amarda	: Bhatandia, Chamapaswar, Janaghati, Narasingpur, Kanchanpur, Tal Amarda etc.
Sashra	: Korbonia, Asanboni, Morko etc.
Saria	: Bhulanpur, Dholbhanga, Maradahini, Shyamsundarpur, ramkrishnapur etc.
Gopiballavpur	: Parasia, Kapasia, Gopinathpur, Tikayetpur etc.
Alampur	: Gopalpur, Topgeria, Bhattagopalpur, Jagannathpur, Kurichamath, Tentulia, Kadamkhandi, Bakra, Nimdiha, Dumro etc.

Gram Panchayat wise Disaster Management Officials

Name of GP	Designation	Name	Contact No.
Satma	Pradhan	Mihir Nayek	9679383036
	Upa-Pradhan	Anju Sing	9932073057
	E.A.	Sukumar Mahato	7797252717
	N.S.	Sujoy Dandapat	9434610484
	Sahayak	Shbhasish Shit	9635631504
Amarda	Pradhan	Suru Bali Hansda	8967974909
	Upa-Pradhan	Judhistir Dolai	6201811574
	E.A.	Sanjay Bid	9733980984
	N.S.	Shamik Ghosh	9933750744
	Addl Sahayak	Dulal Ch. Routh	9932541033
Sashra	Pradhan	Chhabi Rani Jana	9932043899
	Upa-Pradhan	Bharat Mandal	8016243612
	E.A.	Samay Murmu	9547979358
	N.S.	Anima Sing	7602012689
	Secretary	Samarjit Jana	9932786659
Saria	Pradhan	Suchitra Nayek(Sardar)	8967740148
	Upa-Pradhan	Bhudhu Sing	8967245665
	E.A.	Sougata Bhunia	9800809234
	N.S.	Byomkes Mahata	9474821412
	Secretary	Bidyut Kr. Khamri	9932046628
Gopiballavpur	Pradhan	Ambika Bera	9933921218
	Upa-Pradhan	Salma Saren	6296162296
	E.A.	Balaram Nandi	9735055963
	N.S. in charge	Akhil Ch. Mahato	9933747667
	Sahayak	Ramjiban Rana	8670545731
Alampur	Pradhan	Laxmi Mandi	9695065736
	Upa-Pradhan	Bhudeb Patra	9002685992
	E.A.	Pradip Kr. Pradhan	8159982423
	N.S.	Akhil Ch. Mahato	9933747667
Kendugari	Pradhan	Madhab Hansda	9547360456
	Upa-Pradhan	Minati Hansda	
	Member	Nagen Sing	8348337055
	E.A.	Rabi Hembram	9933859972
	N.S.	Answar Ali	7602190118
	Secretary in-charge	Pabitra Mandal	9932934821

17.4 Gopiballavpur-II Block

INDEX

1. Administrative Map:
2. BLOCK PROFILE:
3. Evacuation plan in connection with natural calamity like flood/cyclone etc:
4. Gram Panchayat wise Relief materials distribution counter in concerned Gram Panchayat :
5. Formation of four men committee for monitoring enquiries & distribution of relief materials at the time of flood and cyclone:
6. Gram Panchayat wise control room :
7. Block Medical Department Status:
8. Block livestock Department Status:
9. Block Storing Agent/Dealer:
10. Gram Panchayat wise MR Dealer :
11. HELICOPTER LANDING :
12. Status of Boat:
13. STOCK POSITION
14. Rivers
15. IMPORTANT CONTACT NUMBER :

BLOCK PROFILE

Block	:	GOPIBALLAVPUR – II DEVELOPMENT BLOCK								
Sub-Division	:	JHARGRAM SADAR.								
District	:	JHARGRAM								
1. Block Head Quarter	:	Beliaberah								
2. Distance from District Head Quarter	:	38 K.M.								
3. Distance from Sub-Divisional Head Quarter	:	38 K.M.								
4. Distance from Police Station	:	0.5 K.M.								
5. Geographical Area	:	201.77 Sq. K.M.								
6. Block Boundary	:	E –Sankrail Block, W- Jharkhand State N-Jhargram Block, S-Gopiballavpur-I Block								
7. Population (As per 2011 census)	:	<table><thead><tr><th>Total</th><th>Male</th><th>Female</th><th>oth.</th></tr></thead><tbody><tr><td>104639</td><td>53652</td><td>50985</td><td>2</td></tr></tbody></table>	Total	Male	Female	oth.	104639	53652	50985	2
Total	Male	Female	oth.							
104639	53652	50985	2							
GP wisePopulation (As per 2011 census)	:	Total								
a. Chorchita GP	:	9900								
b. Nota GP	:	12357								
c. Tapsia GP	:	15807								
d. Kuliana GP	:	14647								
e. Beliaberah GP	:	17596								

f. Kharbandhi GP

: 11991

g. Petbindhi GP

: 22341

9. GP Wise Administrative setup

: Samity-17 Nos,
Gram Sansad-78 Nos.
Mouza-192 Nos,
Uninhabited village (Mouza)-17 Nos.
Inhabited village (Mouza)-175 Nos.,
Total household-23226 Nos.

Evacuation Plan in connection with natural calamity like flood/earth quake/cyclone etc.

Sl. No.	Name of the rescue shelter	Co-ordinates (Lat/Long)	Nature of the shelter	Accommodation capacity (approx.)	Name of GP	Name of village(s) from where people will come to reach the shelter	Approx. distance from rescue shelter to farthest corner of village	Availability of separate toilet for male/female	Availability of safe drinking water	Availability of electricity
1.	Chorchita High School	Lat-22.212070 Long-86.852840	Educational institution	800	GP-Chorchita	Chorchita Kritanasole	1.5 km.– moorum/pitch	Yes	Yes	Yes
2.	Bansjora Primary School	Lat-22.212169 Long-86.852835	Educational institution	60	GP-Chorchita	Dompara	0.8 km. moorum road	Yes	Yes	Yes
3.	Boldi high School	Lat-22.234917 Long-86.859667	Educational institution	400	GP-Nota	Ashkola Bhatpara	0.5 km. moorum road	Yes	Yes	Yes
4.	Gohalura upper primary school	Lat-22.305556 Long-86.910556	Educational institution	200	GP-Tapsia	Gohalura Jugdha	2.50 km. moorum road	Yes	Yes	Yes
5.	Malincha High School	lat-22.224530 Long-86.943630	Educational institution	500	GP-Kuliana	Malincha Agarboni Pithapura	1.5 km. moorum road	Yes	Yes	Yes
6.	Kuliana Junior High School	lat-22.221111 Long-86.920833	Educational institution	300	GP-Kuliana	Hatipata Kuliana	0.5 km. moorum road	Yes	Yes	Yes
7.	Kushmar High High	lat-22.251833 Long-86.970472	Educational institution	400	GP-Beliaberah	Dainmari Jahanpur	2.5 km. moorum road	Yes	Yes	Yes
8.	Bondahi Jr. High school	lat-22.251315 Long-86.970201	Educational institution	200	GP-Beliaberah	Bhanderdiha Rampura Parsana	1.0 km. moorum road	Yes	Yes	Yes
9.	Mahuli MSK	lat-22.281278 Long-86.949861	Educational institution	75	GP-Beliaberah	Koima Mohuli	1.5 km. moorum road	Yes	Yes	Yes
10.	Mahapal High School	lat-22.221722 Long-86.982694	Educational institution	200	GP-Beliaberah	Jahanpur	1.0 km. moorum road	Yes	Yes	Yes
11.	Kolaboni Primary School	lat-22.295790 Long-87.003980	Educational institution	75	GP-Kharbandhi	Kolaboni	0.5 km moorum road	Yes	Yes	Yes
12.	Chinisol Primary School	lat-22.255889 Long-87.009917	Educational institution	75	GP-Kharbandhi	Asanboni	1.5 km moorum road	Yes	Yes	Yes
13.	Baghuasole High School	lat-22.241278 Long-87.027000	Educational institution	700	GP-Petbindhi	Baghuasole Bansiaberah Junsola Raipal Suriyam	2 km moorum road	Yes	Yes	Yes
14.	Petbindhi DKM High School	lat-22.201194 Long-86.999278	Educational institution	700	GP-Petbindhi	Bhaktapat Molai Daria Sonakonia	2 km moorum road	Yes	Yes	Yes

6. Gram Panchayat wise Relief materials distribution counter in concerned Gram Panchayat :

1. Chorchita Gram Panchayat Office
2. Nota Gram Panchayat Office
3. Tapsia Gram Panchayat Office
4. Kuliana Gram Panchayat Office
5. Beliaberah Gram Panchayat Office
6. Kharbandhi Gram Panchayat Office
7. Petbindhi Gram Panchayat Office

7. Formation of four men committee for monitoring enquiries & distribution of relief materials at the time of flood and cyclone.

Sl. No.	Name of Gram Panchayat	Name of Resource person concerned Pradhan with contact no.	Name of the representative of opposite party with contact no.	Sabhapati's Representative (PS member)	B.D.O's Representative
1	Chorchita	Champabati Mahali (8967311949) (7047215873)	Biplab Mandal	Kishori Mohan Bera (9932109320) (8101855207)	Nazibulla Laskar, JE(RWP) (9681980019)
2	Nota	Chakradhar Dandapat (6294883421)	Amal Kumar Gorai (9647469596)	Goutam Sing (8967928865)	Karuna Sindhu Manna, I-BCWTD (9635646271)
3	Tapsia	Susama Sing (9932926585)	Nirmal Kahmri	Bhimchandra karan (9932331293)	Bappa Mandal, JE (8918630334)
4	Kuliana	Arati Sing (8250103068)	Mahadeb Dandapat (8942967613)	Sanjit Murmu (6296472046)	Indrajit Dev, BWO (7586973480)
5	Beliaberah	Tapan Shit (9679299503)		Saktipada Barik (8167000542)	Subrata Mandal,SEO (9932705933)
6	Kharbandhi	Salge Mandi (8116832907)	Sourav Patra	Bulti Nayek (9641882745)	Tushar kanti Bhunia,JE (RWS) (8768929354)
7	Petbindhi	Jayanti Shit (7908632265) (6295297668)		Parthana Bijli (9800742737) (9800658474)	Dipak Senapati, FEO (9775671880)

8. Gram Panchayat wise control room:

Sl. No.	Name of Gram Panchayat	Executive Assistant	Contact No.
1	Chorchita	Swarup Giri, EA	7488708572/9732668092
2	Nota	Debdutta barik, Addl. Sahayak	9002329954
3	Tapsia	Biswajit Ghosh, Secretary	9932883753
4	Kuliana	Binay Rathi, EA	7001580069/9932399903
5	Beliaberah	Samir Das, Sahayak	9933890213
6	Kharbandhi	Ambika Mahata, EA	6296920839
7	Petbindhi	Soumitra Sarkar, EA	9732451646

9. Block Medical Department Status:

Sl. No.	Designation	Name	Contact No.
1.	BMOH(Head of the office)	Dr.Kinshuk Roy	8001940402
2.	MO(Chorchita GP)	Dr.Susobhan Das	8967593241
3.	MO(Kuliana GP)	Dr.Sanjib Kuila	9775621678
4.	MO(Kharbandhi GP)	Dr.Monima Sing	9679021856
5.	MO(Petbindhi GP)	Dr.Monima Sing	9679021856

10. Block livestock Department Status:

Sl. No.	Designation	Name	Contact No.
1.	BLDO	DR. Tuhin Kumar Adak	9635038392 /9434365983
2.	BAHC	Dr.Santu Mandal	6289428740
3.	Pranibandhu(Chorchita GP)	Chandan Dey	9733540891
4.	Pranibandhu(Nota GP)	Amarjit Sing	8972643305
5.	Pranibandhu(Tapsia GP)	Uttam Kumar Das	9933845971
6.	Pranibandhu(Kuliana GP)	Asish Sekhar	9932648343
7.	Pranibandhu(Beliaberah GP)	Kishori Mohan Hansda	9800286197
8.	Pranibandhu(Kharbandhi GP)	Ashim Santra	8967547969
9.	Pranibandhu(Petbindhi GP)	Debarata Pal	9933592815

11. Block level Storing Agent/ GR Dealers:

Name of the Block	Name of the Storing Agent/ Authorized NGO/GR Dealers	Mobile no.
Gopiballavpur-II Dev. Block	Kamalendu Paira	9064547659

12. Gram Panchayat wise MR Dealer:

Sl. No.	Name of Gram Panchayat	Name of MR/GR Dealer	Contact No.
1	Chorchita	Ananda Ghosh, Gobindapur Hiramba Ghorai, Chorchita	8967312319 9932331950
2	Nota	Purna Ghosh, Akna	9635677567
3	Tapsia	Mrinmoy Mohanta, Kenduana	9932867662
4	Kuliana	Sasadhar Santra, Jharia Chittaranjan Ghorai, Kuliana	9932506850 9932676017
5	Beliaberah	Kamalendu Paira, Beliaberah	9064547659
6	Kharbandhi	Madhabi Mahata, Bansda Kaushik Maity, Kharbandhi	8670994419 9002186344
7	Petbindhi	Anupam Pal, Mahapal Goutam Roy, Padima	8116638375 9002234172

13. HELICOPTER LANDING:

- 1) Chainisol
- 2) Beliaberah play ground.
- 3) Baharuna
- 4) Petbindhi Play graound

14. STOCK POSITION AS ON 26.05.2023.

1. Tarpulin	:	1025 Nos.
2. Dhuti	:	217 Nos.
3. Saree	:	66 Nos.
4. Children garments	:	48 Nos.
5. Lungi	:	233 Nos.
6. Blankets	:	00 Nos.
7. Salwar Kamij	:	130 Nos.
8. Male wrapper	:	143 Nos.
9. Pajama & Panjabi	:	289 Nos.
10. Kurti Laggings	:	101 Nos
11. Spl.GR Rice	:	379.50 Qtls.
12. Spl Cash GR	:	Rs.13520/-

15. Rivers :

- A. Subarnarekha** - Flows in Chorchita, Kuliana, Beliaberah, Petbindhi Gram Panchayat
B. Dulung - Flows in Tapsia, Beliaberah, Kharbandhi, Petbindhi Gram Panchayat

16. IMPORTANT CONTACT NUMBER:

Designation	Name	Contact No.
Block Development Officer	Arghya Ghosh	8348691754
Joint Block Development Officer	Biplab Kumar Pal	8617214795
BDMO-in-Charge	Pradip Mahapatra	7001126056

17.5 NAYAGRAM BLOCK

General Information

Name of the Block	Nayagram
Block Head Quarter location	Baligeria
Distance from District Head Quarter	69 KM
Geographical Area	503.15 sqr km.
Gram Panchayat	12
Mouza	336
No.of House Hold	32225
Total Population	142243

Animal Husbandry& Fishery

Cattle	88585
Buffalos	54205
Goat	63680
Sheep	12603
Pig	9352
Net water area pisciculture	223.06
Veterinary Hospital	4

Health Facilities

No. of B.P.H.C.	1(30 beds)
No. of P.H.C	3(1/6 beds)
No.of Sub-Centre	28
Nearest Sub-Divisional Hospital	Nayagram Block Health Centre
Super Specialty Hospital	300 beds

Drinking Water Supply

Spot Sources	1 No.
No. of Mouza Covered	

Irrigation

Total irrigated area	6325
Irrigation facilities(in hec)	
Canal(Subarnarekha Branch)	Nil
Tank	260(290hec)
RLI	12(2100 hec)
DTW	11 (220 hec)
STW	225 (800 hec)
Other(Bandh, Well,etc)	260(1015 hec)

Forest

Area covered by social forestry	
Forest land	15400

Power

No. of mouza electrified	290
No. of pump energized	1
Total road length(in km)	80

Road

B.T.	
GR/M	150 km
Earthen	250 km

Lodha Family

No.of Lodha Family	1080
Total Lodha Population	5208
Dwelling House	23
Land purchase for Lodha family	120 patta

River & Cannal

Name of River & Cannel flooded during heavy rainfall	Subarnarekha river & Rajbundh

Air dropping area in flood emergency	Unchu Patina & Nichu Patina	Patina Gram Panchayat
	Khandarpara, Purba Dewlbar, Thuria, Biriberia, Bachhurkhood, Baisbetia	GP No-3
	Jadavpur, Sukdevpur, Aushapal, Malam, Narasinghapur, Ichhapura, Tungadhua, Chhotojharia, Kukrakhupi	GP No-4
Air dropping area in flood emergency	Nichukamalapur, Sitalpura, Dahi, Gokulnagar, Bauria, Nimainagar, Kurchibani, Nayagram	GP No-7
	Jamirapal, khudmari, Bhutaisai, Atmajharia, Fuldaha, Tikrapara	GP No-8
	Jharaboni,	GP No-9

Action plan for facing flood / cyclone situation for 2023

- 1) Control Room will be opened at the office of the Block Development Officer, Nayagram for any kind of natural disaster. Control Room will work for 24 hours in every day at the time of emergency.

a) Phone No. of the Control Room :

Sl No.	Name of the Officers	Designation	Contact No.
1	Rituparna Chatterjee	BDO,NGM	8348691752
2	Sri Rudrendu Nandy	Jt.BDO	8768313200
3	Sri Dhruvajyoti Roy	Jt. BDO	9874070068
4	Sri Soumyakanti	PA&AO	9932621651
5	Sri Tamal kanti Pradhan	BIO	9002967795
	Sri Saptorshi Guria	Inspector, BCW	7407330414
8	Sri Tapan Kr. Khanra	SAE(BP)	9002088079
9	Sri Sajal Nandy	JE (WRDD)	7001497988
10	Sri Malay Shankar	TC(BP)	9732695717
11	Sri Anjan Chatterjee	APO	9732582388
12	Sri Biswajit Golder	BWO	9051059313
13	Sri Manas Ranjan Maity	Acct.cum H.C	9933421436
14	Sri Chiranjib Das	SEO	8768750636
15	Sri Malay Patra	FFA	9732982211
16	Sri Ashis Kr. Bhuinya	IDO	9434934102
17	Y. Tarakeswar Rao	LDA,Relief	8972906760
18	Sri Dipak Kr.Das	Acct.Clerk(PS)	9735471441
19	Sri Abhishek Das	DEO(PS)	9547890676
20	Sri Arindam Tarai	Dy. Secy	7602995161
21	Sri Tuhin Barua	E.C	9434368104
22	Sri Kangali Shee	OCM	9732903442
23	Sri Prabir Pariari	AO	7872018084
24	Sri Ashim Shyamal	OCM	9932298533
25	Sri Jiban Rana	AO	9733755581
26	Sri Sumit Patra	AO	9732597406
27	Sri Kartik Palmal	AO	9735893925
28	Sri Dilip Mahapatra	AO	9609054985
29	Sri Anup Halder	OCM	9831187052
30	Sri Mrinal Kanti Mahata	AO	9932510670
31	Sri Subhadip Mukherjee	TA(MGNREGA)	9474666100
32	Sri Sandip Khanra	TA(MGNREGA)	7872304275
33	Sri Preetam Das	JPO,(MGNREGA)	8972349595
34	Sri Anil Das	Orderly Peon	9735662933
35	Sri Saptarishi Das	P.Asst.(MGNREGA)	7908391017
36	Sri Kaushik Dutta	C.A.(MGNREGA)	7047032295
37	Sri Makar Tudu	ERP (SHG)	7407396568

G.P. wise Contact Details during Disaster like situation

❖ **1 No. Patina GP:**

Affected Areas	Rajpahari, Fulboni, Taldangra, Upar patina, Nichu patina.
Flood Shelter	Ugalsanda pry. School, Fulboni pry., UparPatina pry., Nichu Patina pry., Patina S.C.High School, Rangamatia pry.
Ration Dealers details	Dipankar Jana – 9932541309 Pravangshu Shekar Dey – 9933455165
Resource Person Details	Kartik Malai – 9732880629 Debashis Dash – 9734148908 Mukul Jana – 9933877362
Transport Person Details	Anup Jana-Rajpahari-Tractor owner – 9932102773 Manas Dutta-Patina-Pick up owner – 9564016844 Swapan Chudhury-Paina-Tractor owner – 7679334331 Dilip Dey-Patina-Pick up owner - 8798072941
Health Centre Details	Upar Patina(Rangamatia)sub- centre : Gita jana(Dutta) - 7076378976 Bandana Sur – 7076623516 Chamarbandh Sub-Centre : Shyamali Jana – 9748597312 Runu Shee - 9635856780
Civic Volunteer Details	Anupam Dash-Patina – 8436626764 Malan Choudhury-Patina – 9932377977 Debashis Khiladi- Fulboni – 9564091381 Amit GiriChamarbandh – 9635379759

❖ **2 No. Malam GP:**

Affected Areas	Aushapal,Narasingapur,Jadavpur,Malam, Ichhapur Nimainagar, Chhotojharia, Kukrakhupi.
Flood Shelter	kalmapukuria B.S.C. High School,Nimainagar MSK.
Ration Dealers details	Binatabala Sahoo – 9734476081 Putulrani Sahoo - 9732721823
Resource Person Details	Anadi Ghosh- 8670757853 Chandan Ghosh – 9002275489 Deboprada ghosh – 9732582773 Tapan Senapati – 7797481331 Parbati Murmu - 9836320812
Transport Person Details	PalitPabon Kuila – 9732670054 China Khatua - 9800174674
Health Centre Details	-
Civic Volunteer Details	Gauranga ghosh – 9800988191 RahulKaran – 9564007181 Sanjay Senapati – 9733795542

❖ 3 No. Baranegui GP:

Affected Areas	Tentulia,Morchi.
Flood Shelter	Morchi Golapnath SC Jr. High School.
Ration Dealers details	Suresh Ch. Barrick - 9002554261
Resource Person Details	Padma Lochan Mahata – 8016920107 Soumitra Raj – 9547693897 Ashim Mahapatra – 7063193230 Manohar Raj - 8942023776
Transport Person Details	Rabindra giri – 9609125215 Swapn Kr. Mahata –9732996176 Kamalesh Mahata – 9664888560 Askar Ali - 9732490819
Health Centre Details	Gharkhelad Sub Centre: Jhahanara Bibi – 8972030166 Lakhsi Mahata - 9733736813 Swapna Mahata - 8373862609
Civic Volunteer Details	Samiran Shit – 8972364899 Ram Mohan Hansda– 8972458811 Chandan Tudu– 9547924815 Labachand Murmu - 7384644335

❖ 4 No. Kharikamathani GP:

Affected Areas	Kukrasole,Dhansola,Khanamuri,Jharia,Kadakothe.
Flood Shelter	Khorika BMSC H.S. School,Nayagram Thana Balika Bidhyalaya
Ration Dealers details	Debasish Barrick- 9932510581 Tagar Mahata – 7872459918 Abharani Mahata - 9933028179
Resource Person Details	Sujay Kr. Patra-Ghugrisole – 9932569837 Bisweswar Pahari-Dokra – 9733951931 Swapn Kr. Mahata-Khanamuri – 9932647404 Bibhuti Bhusan Mahata-Jharia – 9933525799 Tapan Mahata-Baradhansola - 9733705295
Transport Person Details	Mangal baskey-panchkania – 8670872356 Sankar Hembram-Kuji –8972155325 Utpal Singha-Gohaldiaha – 9932507504 Subrata Routh-Karikhamathani- 9932283038 Haripada Patra-Kharikhamathani - 7602999414
Health Centre Details	Kharikamathani Sub- Centre: Anjana Dash – 9679171659 Sonali Mahata - 9933313057 Marapada Sub-Centre : Malati Koyal(shit) – 9933565701 Ghorathoria : Supriti Dey - 9734528245
Civic Volunteer Details	Akasdeep Singha-Gohaldiha– 8001476007 Amal Das- Bhatbhanga– 8016310334 Amit Mahata-Kurmipatra– 8967296222 Anam Mahata-Siala – 9564890878 Rajib Mahata-Kurmipatra - 7872651658

❖ 5 No. Nayagram GP:

Affected Areas	Dahi, Pungri, Unchu Kamalapur, Nichu Kamalapur, Sitalpura, Jarka.
Flood Shelter	Nayagram Bani Vidhyapith(HS), Tuphuria Pry. School.
Ration Dealers details	Nantu Adhikary-Nayagram - 9733951869 Phanibhusn Ghosh-Kurchiboni -9734561089
Resource Person Details	Nantu Adhikary-Boat - 9733951869 Gauranga Dolai-Boat- 9679497243 Samit Paria-Tree Cutter- Kamalapur - 8972187350
Transport Person Details	Debopra Maity-JCB - 8670980542 Utpal Senapati-JCB -9733753372 Nabakumar Mahapatra-Tractor, Tractor - 9635821741 Brajendra nath Senapati-Truck - 9639385811
Health Centre Details	Garka Sub-Health Centre: Anita Senapati-ANM - 9733500278 Dsubrata Karan-HMO - 9609168729
Civic Volunteer Details	Sanjay Ghosh-Unchu kamalapur - 7585918880 Tanmoy Jana-Unchu Kamalapur- 9564496048

❖ 6 No. Jamirapal GP:

Affected Areas	Fuldiha, Tikrapara, Purba Kusumkuria, Jamirapal, Khudmorai, Atmajhia, Bhanspat, Bhuasai.
Flood Shelter	Khudmorai Gajendra SC High School, Kumarpur Pry. School.
Ration Dealers details	Adhir Patra-Atmajhia - 9732981714 Jayanta Mahata-Banspat -9932569846
Resource Person Details	Harekrishna Patra-Fuldiha - 8001275916 Sukdev sau-Tikrapara- 9932496733 Dipak Pattanayak-Jamirapal - 9593340802 Adhir Ch. Ghosh-Khudmorai - 8436721048
Transport Person Details	Tapas Patra-Pick up - 9932679116 Susanta Patra-Tractor -9679199510 Sukdev Sau-Pick up - 9932496733
Health Centre Details	Jamirapal health Sub Centre: Banspat Health Sub-Centre:
Civic Volunteer Details	-

❖ 7 No. Berajal GP:

Affected Areas	Jharaboni, Kenduboni, Satathia, Gobindapur.
Flood Shelter	Govindapur Pry. School
Ration Dealers details	Indubhushal Shyamal-Jugisole - 9933444536 Prabakar Sau-Jharaboni -9932510578 Manmatha Bera-dolgram - 7602041564 Nityananda Bera- Nekrasole - 9732612293
Resource Person Details	Harendra Nath Mahata- Harimaity- 8001275132 Umesh mahata-Nekrasole- 8018284178
Transport Person Details	Santosh paira-Pick up, Bolero - 8116959950 Uttam Sau-pick up and bolero -9732575913 Tusar Kanti Mahata - 9932236193
Health Centre Details	Asurhata Sub- Centre: Usha Mahata - 9800576588 Jugisole Sub- Centre : Madhusudhan Giri - 8145946079
Civic Volunteer Details	Tapan Mahata- Kenduboni- 9933131918 Manisankar Pusti-Berajal- 8670307081

❖ 8 No. Baligeria GP:

Affected Areas	Banskuti,Srirampur,Tikrapara,Balimundi mouza.
Flood Shelter	Banskuthi Jr. High School, Baligeria SC High School.
Ration Dealers details	Tapas Mahata-Belajhore – 9933020800 Jatindra Mahata-Patharbandh –9932825982 Bidyut Bera- Amladangri – 9932510779 Jatindranath Dhal-Dhobagobindapur - 9932259065
Resource Person Details	CSP Gita Mahata – 7550886238 CSP Sila Singha – 7602472348
Transport Person Details	Sudhansu Maity-Pick up – 8016099568 Chandranan Mahata- Bolero –9593436468 Swapam Bera-Van – 9635480840
Health Centre Details	Andharisole Health Sub- Centre: Subhasini Mandal– 8768827197 Neguria Health Sub- Centre: Riya Mondol– 8436554622 Baligeria health sub- Centre: Sritikanta Mahata - 9732696915
Civic Volunteer Details	Nabendubikas Mahata– 9932496922 Tamal Mahat – 7797314326 Nirupam Mahata - 9932053310

❖ 9 No. Arrah GP:

Affected Areas	Baksa,Dudhiasole,Mohanpur.
Flood Shelter	Nagripada SC Jr. High School
Ration Dealers details	Sanjib Kr. Mahata-Kuldiha – 9932569720 Dhiman Mahata-Kuldiha –9932234826 Balaram Sahoo-Ramkrishnapur – 9734024681 Ratikanta Jana-Paika - 9647477811
Resource Person Details	Sudhir Kr. Singh-Nagripada – 9647457389 Tapan Mahata-Dhumsai – 9564580124 Amitava mahat-Kuldiha - 9564400958
Transport Person Details	Gaotam mahata-Nagripada – 8145283266 Padmalochan Mahata-Dhumsai –7872845136 Anshuman Das-Dumuria – 9775648024
Health Centre Details	Arrah Healthsub- centre: Ambika Mahata– 9734803172 Nagripada health sub-Centre: Gita Patra– 8116514269 Dhiral Baligeria Health Sub-Centre: Susmita saha- 8016751385
Civic Volunteer Details	Manaranjan Mahata – 9593427899 Basanta Mahata – 7797014177 Rahul das – 9735716415 Naren Murmu - 9647005375

❖ **10 No. Chandrarekha GP:**

Affected Areas	Satpoutia, Amdiha
Flood Shelter	Satpoutia ICDS.
Ration Dealers details	Banshidhar Patra-Satpoutia – 9732865744 Keshab Mahata-Chilkipada –9593867492 Tusharkanti Jana-bamanda- 9932259310
Resource Person Details	Ranjan Bera-biswanathpur – 8001015866 Dipak Bhunia-Naradi – 9647497009
Transport Person Details	Nibaran Jana-Bamanda – 9733521131 Sankar Patra-Satpoutia –9647008872 Bimal Rout-Amdiha – 7797163798 Bimal Murmu-Naradi - 9647867043
Health Centre Details	Kesharekha sub- Health Centre: Hirabati Mandi – 9609205156 Tulsiboni Health Sub- Centre: Indira Hembram – 8001766977
Civic Volunteer Details	-





17.6 Binpur-II Development Block

Block at a glance

 **Location :-**

Binpur-II Dev. Block is situated at the North-Western side of the District Jhargram.

 **Boundaries:-**

-  North:- Bankura District ;
-  South:- Jharkhand State & Jamboni Development Block ;
-  East:- Binpur-I Development Block ;
-  West:- Bankura & Purulia District ;

 **Latitude and Longitude of Belpahari:-**






Latitude:- 22° 58'N

Longitude: - 87° E






 **Average annual Rainfall:-**1400 mm

 **Type of soil:-** Alluvium&Laterite

Type of Land:-

-  Cultivated Land- 23870Hec.
-  Orchard Land - 537Hec.
-  Cultivable waste Land- 937Hec.
-  Forest land-21720Hec.
-  Home stead Land - 9365 Hec.

Block Administration:-

 Total area in a Sq. Km.	-	576 Sq.Km.;
 Distance from District Head Quarter	-	40 KM;
 No. of total G.P.s	-	10
 No. of Sansad	-	128
 Total Mouza	-	470

Schools :-

• No. of Primary Schools	: 204
• No. of Jr. High Schools (New Setup)	: 41
• No. of Higher Secondary Schools	: 21+1
• No. of College	: 01
• No. of S.S.K.	: 110
• No. of M.S.K.	: 09
• No. of A.W.C.	: 399
• No. of I.C.J.C.K.	: 131
• No. of N.C.L.P. Pry. School	: 01
• No. of N.G.O. Pry. School	: 01



Health

Gramin Hospital	: 01
P.H.C.	: 03
Sub-Centre	: 36



Drinking Water Supply :

Spot Source tube-well:	2376
Village Covered	: 404

Socio Economic features

A. Population Data	2011
Total Population	164227
Male	82964
Female	81263
Sex Ratio	997.47
Total number of households	38878
Total number of SC Population	22581
% of SC Population	13.75%
Total number of ST Population	71767
% of ST Population	43.70%
Total number of Minority Population	860
% of Minority Population	0.523%

Climate and Rainfall

- Average annual Rainfall:- 1400 mm
- Month wise Temperature and rainfall chart of Block-Nil

River System and Dams

River passing through the villages

a. Tarafeni River

- i. **Villages** - Dholbhanga, Murgi, Kakatpal, Bhadrupal, Chhuchada, Karatsole, Dangarpara, Bindadhara.(Harda GP)

Gram Sansad Disaster Management Committee

As Enclosed of Sida GP, Kanko GP, Simulpal GP, Sandapara GP, Harda GP, Ergoda GP, Banshpahari GP, Belpahari GP, Bhelaidiha GP, Bhulaveda GP.

Dholbhanga Sansad

Sanjay Aguyan-7602192543, Tarun Karmakar-8670738604, Rabilal Saren-8158877161

Kakatpal Sansad

Kallol Bag-9609893142

NGO-Amit Chakraborty-9679339125, Ajit Dandapath-9434453843

Resource Analysis-1

I Storage facility with capacity

II Cyclone shelter

Harda GP Cyclone Shelter

Dimension : Length-23.5 metre, Breadth-8.8 metre

Capacity : 1200

Binpur-II Dev. Block Cyclone Shelter

Dimension : Length-23.5 metre, Breadth-8.8 metre

Capacity: 1200

III. Earth moving and road cleaning equipments

JCB Machine, Dipak Kr. Sahoo-9732144789

IV. Govt. Officers available for deployment

1. B.D.O. Binpur-II – 8348691758
2. Jt. B.D.O., Binpur-II – 9748126844
3. Harda G.P. Office – 9732876912
4. Pradhan, Harda G.P. – 6296591805
5. R. Mandi, B.W.O. – 9679643653
6. Sougata Kar, UDC (Relief) - 7872972307

V.NGOs and volunteers/skilled retired personnel

Sudepta Kr. Dey- 7003747466, Basudev Pal-7679801350, Sonu Mukhi-8348188152, Nayan Sing-8016309820, Pradip Kr. Mahata-8116897624

VI Trained volunteer in rescue/first Aid

Sudepta Kr. Dey- 7003747466, Basudev Pal-7679801350, Sonu Mukhi-8348188152, Nayan Sing-8016309820, Pradip Kr. Mahata-8116897624

VII Power/Supply available

Electric Supply Office, Belpahari-03221-205980

VIII List of Vehicles

Bijoy Kr. Mahata – 9732585588
Vehicle No-WB-33-B-4921 (Pick Up Van)
Vehicle No-JH-05-AA-9613 (Pick Up Van)

17.7 Jamboni Block

Block at a glance

- **Location** :-Jamboni Dev. Block is situated in the Western side of the District Jhargram.
- **Boundaries**:-
North:- Binpur - II Block ;
North East: Binpur - I Block
South:- Gopiballavpur -II Block & N.H - 6
West:- Jharkhand State(Purba Singbhum District);
- **Latitude and Longitude of Jamboni**:-
📍 **Latitude**:- 22° 48" 41.20
📍 **Longitude**:- 86° 85" 19.48
- **Average annual Rainfall**:-1400 mm
- **Type of soil**:- Alluvium & Laterite

🌍 **Type of Land**:-

- 🌍 Agricultural Land- 28604 Hec.
- 🌍 Orchard Land - 120 Hec.
- 🌍 Cultivable waste Land- 970 Hec.
- 🌍 Forest land-4880 Hec.
- 🌍 Home stead Land -4000 Hec.
- 🌍 Fallow Land -450 Hec.
- 🌍 Up Land - 8948.2 Hec.
- 🌍 Medium Land - 11450.9 Hec.
- 🌍 Low Land - 4421.3 Hec.
- 🌍 Very Up Land - 1340 Hec.

🏠 **Block Administration**:-

- 🏠 Total area in a Sq. Km. - 318.13 Sq.Km.;
- 🏠 Distance from District Head Quarter - 20 KM;
- 🏠 No. of the Block - Jamboni
- 🏠 Name of Block Head Qut - Gidhni
- 🏠 No. of total G.P.s - 10
- 🏠 No. of Sansad - 85
- 🏠 Total Mouza - 338
- 🏠 Inhabitant Mouzas - 233
- 🏠 Depopulated Mouzas - 105
- 🏠 No. of ITDP Mouzas - 155
- 🏠 No. of Backward Villages - 20
- 🏠 No. of Masjid - 07
- 🏠 No. of Police Station - 01(Jamboni)

- 🏠 No. of Main River - 01(Dulang)
- 🏠 No. of RLI Scheme - 26
- 🏠 No. of DTW - 03

- **Education :-**

- No. of Schools :197
- No. of College : 01
- No. of A.W.C.(ICDS) : 234
- No. of I.C.J.C.K. : 79
- No. of Madrasa School : 01
- No. of Integrated(BRGF) School : 01
- No. of jr. High School Under Cons. : 04

- **Health**

- B.P.H.C : 01(Chilkigarh)
- P.H.C. : 03
- Sub-Centre : 24

- **Drinking Water Supply :**

- Total No. of Mouzas having Drinking water facilities : 275
- Pipe line water supply :03
 - i) Gidhni under PHE
 - ii) Dumuria under SRPP
 - iii) Lalbandh under PHE
- No. of Main River : 02 (Dulang&Deb)
- No. Of Railway Station - 01 (Gidhni)

- **Demography (as per 2011 Census)**

Sl No.	Gram Panchayat	Population	Male	Female	Others	Family/H.H
01	Dharsa	10711	5439	5272	00	2557
02	Parihati	12408	6370	6038	00	2775
03	Kapgari	13155	6738	6417	00	2833
04	Gidhni	13804	7036	6768	00	3197
05	Lalbandh	9596	4867	4728	01	2240
06	Chilkigarh	8875	4512	4363	00	2020
07	Dubra	9657	4915	4742	00	2223
08	Jamboni	10332	5202	5130	00	2376
09	Kenddangri	10961	5620	5341	00	2603
10	Chichra	13704	7070	6634	00	3001
Total		113201	57767	55433	01	25775

- **Socio Economic features**

Population Data	2001	2011
Total Population	-	113201
Male		57767
Female		55433
Total number of households		25775
Total number of SC Population		21781
% of SC Population		19.24%
Total number of ST Population		36023
% of ST Population		31.82%
Total number of Minority Population		6422
% of Minority Population		5.67%
Total No. of Women SHGs		1881

Livelihoods Profile	
Total cultivable land	28604 Hec.
Total irrigated land (In Hec.)	8405
% of fallow land	450 Hec.
Cropping Intensity	137%
Major crops & vegetables	Paddy, Wheat, Mustard, Summer, Maize, G. Nut, Til etc
Major Livelihoods practices (other than agriculture)	1500 Hec.
Major non-farm livelihoods	8525

- **Climate and Rainfall**

Average annual Rainfall:- 1400 mm

Month wise Temperature and rainfall chart of Block-Nil

- **River System and Dams.**

River passing through the villages

b. Dulung River

c. **Villages** - Bamdiha, Mamurda, Kasidanga, Dhunamari, Nagdi, valiatikri, Dhadika, Satpati, Tunkasole, Beldangri, Ketkanda, Phoolpahari, Jorsha, Bandia, Dhadika, Sonahara, Chilkigarh, Amlatora & Panpara.

d. **Gram Panchayat:** Dharsha, Parihati, Gidhni, Kenddangri & Chichra.

- **Resource Analysis:**

I Storage facility with capacity

II Cyclone shelter

Gidhni Community Hall

Dimension: Length-41 metre, Breadth-20 metre

Capacity: 2000

Chichra High School

Dimension: Length-250 metre, Breadth-55 metre

Capacity: 3500

Parsuli High School: - Dimension: Length - 90 Metre, Breadth- 10 Metre, Capacity: 1000

III. Earth Cutting and road cleaning equipments

JCB Machine, Balaji Panda, Gidhni -9732684742

IV. Govt. Officers available for deployment

Saikat Dey, B.D.O Jamboni - 8348691755

Hemanta Paramanik, Jt. BDO-9800726722
Benimadhab Dandapat, A.A.E.O(N) -9474900246
Sawon Maji, CI-8972611594
Bidhan Chandra Hembram, BDMO-7384423139
A.D.A Jamboni- 9434667977
Dr. Sudip Nath, B.L.D.O - 9474303325

V: Trained volunteer in rescue/first Aid

Dipankar Das -7407124114, Mrinmay Das-9932720159, Dipak Das-9679870310 & Sumanta Mahata - 9564819203.

VI: Power/Supply available

Electric Supply Office, Jamboni -03221-205980

VII: List of Vehicles

Pranab Mahata -9933610545
Vehicle No-WB-33-B-4897 (Pick Up Van)
Kanai Karan - 9932764732
Vehicle No-WB-33-A-6983 (Pick Up Van)

- **List of Air Dropping Points:**

Place of landing of Aircraft/Helicopter (Name of the place)	Co-ordinates of the Place	
	Latitude	Longitude
Jamboni Play Ground of CRPF Camp	N-22° 48' 41.20"	E-86° 85' 19.38"
Chilkigarh Play Ground, Chilkigarh	N-22° 48' 42.21"	E-86° 85' 20.39"
Gidhni Railways Boys Ground	N-22° 48' 42.22"	E-86° 85' 21.37"
Ghutia Pry.School Football Ground	N-22° 48' 42.23"	E-86° 85' 21.42"
Chutia Football Ground, Near Balidiha	N-22° 48' 42.24"	E-86° 85' 20.41"

17.8 Binpur I Block:

AT A GLANCE

Name of the Block	:	Binpur-I Development Block
Block Head Quarters at	:	Lalgarh
Police Station	:	Lalgarh & Binpur
Sub-Division	:	Jhargram
District	:	Jhargram
Distance from Dist. H.Q. (km)	:	24 Kms.
Geographical Area	:	35968.83 hec.
Bounded By in the North	:	Raipur-II Block (Bankura District)
in the South	:	Jhargram Block
in the East	:	Midnapore Sadar & Salboni Block
in the West	:	Binpur-II Block
No. of Gram Panchayat	:	10 (Ten)
No. of Mouza	:	553
No. of Populated Mouza	:	413
No. of De-populated Mouza	:	140
No. of Gram Sansads	:	115
Population (as per 2011 census)	:	Total – 155526 Male – 78947 Female – 76579
S.T. Population (as per 2011 census)	:	45610 (29.32%)
S.C. Population (as per 2011 census)	:	39234 (25.23 %)
Literacy Rate (as per 2011 census)	:	Total : 98286 (63.19 %) Male : 60002 (61.04 %) Female : 38284 (38.95%)
Total No. of House Holds	:	39855
No. of AAY Family (as per RHS)	:	} 7646 (SC:-6066, ST:-5523, 11269 Other:7326)
No. of BPL Family (as per RHS)	:	
No. of APL Family (as per RHS)	:	
Total No. of Banks	:	11
Total No. of Post Office	:	23
No. of Ration Dealer	:	52
No. of Polling Station	:	132
No. of Secondary & Higher Secondary School:	:	15
No. of Junior High School	:	24
No. of Primary School	:	139
No. of SSK	:	63
No. of MSK	:	7
No. of ICDS Project	:	1
No. of AW Centre	:	425
No. of Library	:	6
Binpur Rural Hospital	:	1
Health Sub- Centre	:	33
Primary Health Centre (PHC)	:	5

BLOCK LEVEL DISASTER MANAGEMENT COMMITTEE (BDMC)

Sl. No.	Name	Designation	Contact No.
1.	Paritosh Mandal	Savapati, Binpur-I P.S.	6297380027
2.	Priyanka Mahato	O/C Relief Officer, Binpur-I Dev. Block	7872345358
3.	Dr. Maheshwar Mandi	BMOH, Binpur-I Dev. Block	9933610593
4.	Dr. Saravanan E.	V.O., BAHC, Binpur-I Block	9051501615
5.	Sanjay Ghosh	Elected Representative of Binpur-I P.S.	9932948255
6.	Baidyanath Saren	Elected Representative of Binpur-I P.S.	8670941433
7.	Putul Bagrai	Karmadhakshya Khadya-O-Sarbaraha, Binpur-I P.S.	8967330237
8.	Sakra Baske	Karmadhakshya Sisu Nari Jana Kalyan-O-Tran, Binpur-I P.S.	9635902699
9.	Brajen Mandi	Karmadhakshya Purta Karja-O-Paribhan, Binpur-I P.S.	9800639139
10.	Bibirani Mumru	Karmadhakshya Krishi Sech-O-Samabay, Binpur-I P.S.	8597840504
11.	Anup Biswas	Karmadhakshya Ban-O-Bhumi, Binpur-I P.S.	9547155100
12.	Mrinal Kanti Mahata	Karmadhakshya Kutir Silpa Bidyut-O-Achiracharita Sakti, Binpur-I P.S.	7602381631
13.	Pratap Kumar Roy	Karmadhakshya Matshya-O-Prani Sampad, Binpur-I P.S.	8537986629
14.	Kalandi Hembram	Karmadhakshya Sasthya-O-Paribesh, Binpur-I P.S.	-
15.	Chanchal Mahata	Karmadhakshya Siksha-O-Krira, Binpur-I P.S.	9903440491
16.	Suwendu Maji	Chief Inspector (F&S), Jhargram	9734494853
17.	Sadhana Baske	CDPO, Binpur-I Dev. Block	9476290487
18.	Arindam Bhattacharya	I.C., Lalgargh Police Station	9083269523
19.	S. Mallick	I.C., Binpur Police Station	7797175175
20.	Sri Jagabandhu Mahanta	Forest Ranger, Lalgargh	7472905766

GRAM PANCHAYAT WISE

GP No.	Name of G.P	Sl. No.	Name	Designation	Ph. No
1	BINPUR	1	Makar Chandra Soren	Sec.	9932099035
		2	Supriya Soren	NS.	9434990162
		3	Arabinda Pandey	Addl. Sahayak	9735264426
		4	Debasish Mahata	GPK	9932033488
		5	SK. Tarzan	GRS	9732601802
		6	Koushik Karan	GRS	8509603073
		7	Bivas Mahata	Jeebika Sebak	9647002502
2	BELATIKRI	8	Ashim Ghosh	E.A.	9932879531
		9	SK. Abdul Gofur	GRS	9733540420
		10	Nabakumar Nayek	Addl. Sahayak	9002675495
3	ANDHARIA	11	Palash Bhuiin	E.A.	9547212188
		12	Asish Nad	Sec.	9732585240
		13	Anil Kr. Kar	NS.	9933588040
		14	Sajal Kr. Sahoo	Addl. Sahayak	9474011289
		15	Raju Rath	G.R.S	9932235374
		16	Gora Chand Dey	Jeebika Sebak	9933954168
		G.P Phone No.			
4	DAHIJURI	17		EA	9547381224
		18	Sanjib Roy	NS.	9800228362

		19	Sandip Sankar Debey	Addl. Sahayak	9933712893
		20	Manab Pal	GRS	9932883406
		21	Prasanta Shit	GRS	9933145435
5	BOITA	22	Ujjwal Mukherjee	E.A.	9564579064
		23	Bibhuti Chalak	Sec.	8016153139
		24	Nityananda Bej	NS.	9932465181
		25	Anima Singha	GRS	9932408765
		26	Dayal Giri	GRS	7602011558
		27	Shyamal Chalak	Jeebika Sebak	9932238848
6	DHARAMPUR	28	Ganesh Ch. Mahata	Sec.	9732736879
		29	Smt. Asima Patra	NS.	9735217949
		30	Biswajit Bhattacharya	Sahayak	9932716698
		31	Sandip Das	GRS	9733652089
		32	Hironmay Mahata	G.R.S	9735446171
7	LALGARH	33	Pradip Mandal	NS.	9775013348
		34	Biswanath Mandal	Addl. Sahayak	9609083277
		35	Abhijit Bhuiyan	GRS	9733661979
		36	Mrinmoyee Mahata	GRS	9547729728
		37	Haripada Rana	Sahayak	9800010261
		38	Biswajit Sing	Jeebika Sebak	9732090516
8	SIJUA	39	Gourhari Maity	E.A.	9800509343
		40	Goutam Laha	GRS	9932908399
		41	Ganesh Mandal	GRS	7797048947
		42	Sibaji Mahata	Secretary	8001356322
		43	Bimal Kr. Dey	NS.	9933945785
		44	Subrata Murmu	Sahayak	9932110738
		45	Debu Saha	Addl. Sahayak	9800545694
		46	Bidhubhusan Das	Job. Asst.	9732753309
9	RAMGARH	47	Pranab Roy	GRS	9635169113
		48	SK. Tapu	GRS	7585970888
		49	Asis Kr. Dan	Sec.	9932833113
		50	Jishnu Manna	NS.	9932985180
		51	Debasish Pal	Addl. Sahayak	9433779882
		52	Naran Nandi	Jeebika Sebak	9547289815
		G.P. Phone No.			
10	NEPURA	53	Bapan Ojha	E.A.	9732490464
		54	Prasanta Nandi	Sec.	9732753803
		55	Chhatrapati Mandal	NS.	8145113978
		56	Prasad Rakshit	GRS	8116472245
		57	Krishna Biswas	GRS	9800813248
		58	Koushik Satpati	Addl. Sahayak	9732695432
		59	Boren Bej	Jeebika Sebak	9932785732

Gram Panchayat Wise List of M R Dealer				
Sl.	Name of G.P.	Name of MR Dealer	Centre & Shop No.	Mob. No.
1	Binpur	Jalaluddin Ahmed	Binpur-88	7407724805
2	Belatikri	Gouranga Pratihar	Belatikri-02	8972123175
3	Andharia	Ranjit Kumar Nayek	Andharia-05	8145318980
4	Dahijuri	Smt Manjusree Kundu	Dahijuri-07	9641503809

5	Baita	Gopal Chandra Mallick	Bhulka-46	9932825921
6	Dharampur	Sandip Kumar Samanta	Jirapara-38	9434960198
7	Lalgarh	Tuhin Subhra Tewari	Lalgarh-128	9002756431
8	Sijua	Dasudev Kundu	Baragada-51	9933887415
9	Ramgarh	Susanta Kumar Giri	Aulia-190	9800205398
10	Nepura	Sibaji Kundu	Nischintapur-131	7479157770

Statistical Description.

Name of Block/P.S.	Sansad No	Total Population	Population		Status			
			Oldage	Children less than 5	SC	ST	OBC	General
Binpur-I	115	155526	118116	21032	39234	45610	40464	30218

Description of Family

Name of Block/P.S.	Sansad No	No. of APL Family				No. of BPL Family			
		SC	ST	OBC	General	ST	SC	OBC	General
Binpur-I	115	6066	5523	-	7326	4981	5401	-	29473

Geographical Area

Name of Block/PS	Sansad No.	Agricultural Land(in Hac.)		Charan bhumi(in Hac.)	Bana bhumi (in Hac.)	Others (in Hac.)	Total (in Hac.)
		High	Medium				
Binpur-I	115	5937	11187	564	7742		25430

Land Holding Patter (Family No.)

Name of Block/PS	Sansad No.	Large Farmer	Marginal Farmer	Small Farmer	Agricultural Labour	Landless	Total
Binpur-I	115	-	19810	9652	15874	19212	64548

Agrilculture Type

Name of Block/PS	Sansad No.	Type of crops	Cultivation area (in Hac.)	Insurance of
Binpur-I	115	Peddy, wheat & various type of crops	32112	

Source of drinking water

Name of Block/PS	Tube well		Well	PHD Sloid
	Working	Damage		
Binpur-I	645	45	527	

Communication System

Sansad No.	Name of Block/PS	Telephone Communication	No. of Boat	No. of Bus	No. of Trecker	No. of Traller	No. of Zeep	No. of Motor Cycle
115	Binpur-I		10	30	10	Nil		3386

Preparation of list of Country Boats with Name , Address and contact No. of the Boat Owners

Sl.	Name Ghats	Name of boat owners	Address	contact No.
1	Sijua Ghat	Laxmikanta	Sijua	
2	Nachipur	Bhuter Patar	Nachipur	
3	Mirjapur	Bhakti Senapati	Mirjapur	
4	Nachipur Laghata	Gandhi Bag	Nachipur	
5	Netai	Kalipada Das	Sutpipul	
6	Boita	Rabi Bisui, Ajit Bisui	Boita	
7	Bandarboni	Gunadhar Mahata	Barkala	
8	Sijua to Majura	Alak Patra	Sijua	
9	Basantapur	Fatik Sit, Rabindranath Bera Iovdeh Parali	Basantapur	
10	Kurchiboni	Bikas Bera	Amkala	

Location of air dropping of Relief materials name of Mouza with J.L. No. and the Location

Location of Air dropping of relief materials.	Name of Mouza	J.L. No.	Location
Forest Beat House ground at Lalgarh	Lalgarh	790	Near Binpur Block Office at Lalgarh
Ranarani High School football ground	Ranarani	735	On Dahijuri Basantapur Road
Belatikri Football Ground	Belatikri	762	Belatikri G.P. Office
Lachipur Football ground	Lachipur	571	Near Nepura G.P. Office at lachipur
Dharampur Football ground	Dharampur	869	Near Dharampur G.P. Office
Kantapahari Football ground	Baragada	591	Near Sijua G.P. Office at Kantapahari
Binpur Hospital ground	Binpur	426	Near Binpur G.P. Office
Andharia R. B. High School	Harda	945	On jhargram to Binpur road at Andharia

Location of Camping Sites or Rescue Centre Name of Mouza with J. L. No. and Location

Sl.No	Name of the camping sites rescue centres	Name of Mouza & GP Name	JL No.	Location	School Contact No.
1	Boita Sri Gopal High School	Joshpur, Baita GP	902	On jhargram to boita Rd. via sewayatan near boita G.P. Office	9732786023
2	Barkala Jr. High School.Barkala	Barkala, Baita GP	817	On lalgarh to Palasi Rd.(Morrur Road) via bamal , Jirakuli, Gohami	9474374767
3	Gohomidanga High School, Dharampur	Dharampur, Dharampur GP	869	On lalgarh to Gohami Road via Bamal, Near Dharampur G.P. Office	9932386906
4	Bamalsini Pry. School, Bamal	Bamal, Dharampur GP	808	On Lalgarh to Bamal Road	9002475103
5	Chamitara Pry. School, Chamitara	Chamitara, Dharampur GP	803	On Lalgarh to Bamal Road	8370810275
6	Lalgarh R.K. Vidyalaya, Lalgarh	Lalgarh, Lalgarh GP	790	Proper Lalgarh	9800887715
7	Lalgarh Saradmoni Balika Vidyalaya, Lalgarh	Lalgarh, Lalgarh GP	790	Proper Lalgarh	8967459977
8	Kantapahari V. Vidyapith	Baragada, Sijua GP	591	On Lalgarh to Ramgarh Pucca Road, Near Sijua G.P. Office	9564113723
9	Sijua Pry. School , Sijua	Sijua, Sijua GP	572	Kantapahari to Sijua Road (Moorum)	9647464504
10	Lachipur High School, Lachipur	Lachipur, Nepura GP	571	Near Nepura GP Office at Lachipur	9832283004
11	Balarampur Pry. School, Balarampur	Balarampur, Nepura GP	468	With in 3 K.M. from Nepura G.P. office at Lachipur.	9635128470
12	Guri Pry. School	Guri, Nepura GP	558	On Chowrangi to Laghata Road(Moorum)	9733889027
13	Ranarani High School, Ranarani	Ranarani, Andharia GP	735	On Dahijuri to Basantapur Road.	9800222320
14	Belatikri Pry. School, Belatikri	Belatikri, Belatikri GP	762	On Binpur to belatikri Pucca Road.	9002631251

List of G.P. wise flood prone Mouzas with J. L. No.

Name of G.P.	Sl. No.	Name of Mouzas	J.L. No.
Belatikri	1	Belatkir	762
	2	Dhamro	765
	3	Kanaipal	766
	4	Amkala	767
	5	Silapara	764
	6	Chandrapur	747
	7	Chitranga	753
	8	Jhaparda	754
	9	Dhanghori	748
	10	Madanmohanpur	749
	11	Kurchibonipal(D)	705
	12	Bhagabatichak(D)	708
Nepura	1	Dhapahari	475
	2	Nepura	470
	3	Mirzapur	469
	4	Chikurdanga	472
	5	Lachipur	571
	6	Papatpur	478
	7	Shyamsundarpur	568
	8	Laghata	567
	9	Tentulara	563
	10	Barakala	560
	11	Uparbila	559
	12	Khosa	707
	13	Netarpal(D)	561
	14	Gursai(D)	562
	15	Berapal(D)	487
	16	Katuarpal(D)	488
	17	Sujuadhanpota(D)	565
	18	Saidhanpota(D)	564
	19	Daridanpota(D)	566
	20	Gursai(D)	562
		Page-14	
Dharampur	1	Chantiara	803
	2	Dainmari	805
	3	Lakshmanpur	804
	4	Kadamkhandi	816
	5	Pindraboni	810
	6	Narendrapur	812
	7	Dingla	813
Lalgarh	1	Baghakuli	799
	2	Payrabilla	768
	3	Netai	770
	4	Balidhuma(D)	704
	5	Loatikri	769
	6	Daintikir	702
	7	Sayersai	703
	8	Bundgora	798
Boita	1	Barapalasi	903
	2	Chotopalasi	888

	3	Bararathidanga(D)	904
	4	Choto Rathidanga	905
	5	Barakala	817
	6	Boulabandi	886
	7	Goaldanga	
	8	Bara Ichhapara	898
	9	Rashmondal	1020
	10	Balisira	1009
	11	Boita	901
	12	Lalitapal	872
	13	Kismat Barkala	884
	14	Choto Ichapara	888
Andharia	1	Basantapur	744
	2	Mahalaguri	739
	3	Kansina	737
Dahijuri	1	Dahapal	741
	2	Bandarboni	906
	3	Cheraboni	989
	4	Bhanganadi(D)	740

I. Resource Analysis

1. List of Technical Persons Available(Person with Special Skill)

Sl. No	Name	Address	Contact No.
1	Biswarup Roy	Vill+ P.O+ P.S-Lalgarh	9800046806
2	Sujit Giri	Vill+ P.O+ P.S-Lalgarh	-
3	Sujan Pramanik	Vill- Arakushum, P.O- Binpur, P.S- Lalgarh	9832842603

A. List of Police Stations and Outposts

- 1.Lalgarh PS
2. Binpur PS
3. Ramgarh (Phari) Police Outpost

B. Hazard and Sector Specific Preparedness of Block: Ramrishna Vidyalaya, Lalgarh

18. BLOCK WISE MULTIPURPOSE FLOOD / CYCLONE SHELTER UNDER JHARGRAM DISTRICT.

Sl. No.	Name of Block	Land schedule	Latitude & Longitude	Year of commencement	Year of completed
1	Sankrail	Mouza – Nepura , J.L. No. – 64, Plot No. – 12	22°09' 48.3" (N) 89°5' 20.58" (E)	2013-14	2014-15
2		Mouza – Dakshindari, J.L. No. – 74, Plot No. - 384	22°10' 5.82" (N) 87°3' 43.2" (E)	2013-14	2014-15
3		Mouza – Rohini, J.L. No. – 252, Plot No. -328 & 329	22°09' 46.7" (N) 87°05' 12.8" (E)	2014-15	2015-16
4	Binpur-II	Mouza – Muransole, J.L. No. – 190, Plot No.–74 &108	22°38' 07.67" (N) 86°45' 37.83" (E)	2013-14	2014-15
5		Mouza – Harda, J.L. No. – 448, Plot No. - 467	22°36' 36.98" (N) 86°56' 27.50" (E)	2014-15	2015-16
6	Jhargram	Mouza – Chitalboni, J.L. No. – 594, Plot No. - 246	22°20' 74.90" (N) 87°10' 63.80" (E)	2013-14	2014-15
7		Mouza – Krishnanagar, J.L. No. – 404, Plot No. - 34	22°26' 55.71" (N) 87°00' 08.92" (E)	2014-15	2015-16
8	Gopiballavpur-I	Mouza –Janaghati, J.L. No. – 36, Plot No. - 699	22°12' 31.9" (N) 86°48' 21.5" (E)	2013-14	2014-15
9		Mouza – Sasra, , J.L. No. – 52, Plot No. - 1369	22°11' 15.4" (N) 86°47' 54.6" (E)	2014-15	2015-16
10		Mouza – Gopiballavpur, J.L. No. – 208, Plot No. – 1044	22°12' 31.8" (N) 86°48' 20.4" (E)	2014-15	2015-16
11		Mouza – Chhatinasole, J.L. No. – 257, Plot No. - 424	22°12' 6.7" (N) 86°53' 55.2" (E)	2015-16	2015-16

Flood Shelter / Cyclone Shelter of Jhargram District

Flood Shelter/ Cyclone Shelter	Year of Construction	How many persons can be accommodated	Number & Name of villages tagged with this shelter	Total tagged population	Difference between tagged population & capacity of shelter, if any	Remarks.
Sankrail Block	2014-2015 2015-2016	2,100	17- Telkand, Kuchladari, Amladari, Nepura, Itamandua, Bagansai, Rohini, Harekrishnapur, Sripur, Dhithpur, Salboni, Gardhora, Dhanghori, Tentulia, Birdihari, Andhari, Dhakhin daria,	8500	6400	
Binpur-II Block	2014-2015 2015-2016	1,450	15- Dhulvanga, Murgi, Kakopal, Bhadrpole, Chuchada, Koratsole, Dangarpara, Binadhara, Belpahari, Gandapal, Baishnabpur, Sahari, Fingla, Khandapara, Brahimdiha.	4200	2750	
Jhargram Block	2014-2015 2015-2016	1,450	10- Khalseuli, Nischindipur, Ramchandrapur, Chupka, Bolla, Banstola, Ramchandrapur, Ganakkata, Bandhgora, Damodarpur.	7200	5750	
Gopiballavpur-I Block	2014-2015 2015-2016	2,800	Korbonia, Ashonboni, Murko, Parashia, Kapashiya, Gopinathpur, Tikayetpur, Janaghati, Manusbari, Madanshol, Baraknala, Sijua, Parulia, Gopiballavpur, Nayabasan.	6500	3700	

19. List of Places suitable for Landing of Helicopter

Block wise

Sl. No.	Name of Block	Name of the Site	Latitude (N)	Longitude(E)
1.	Jhargram	Gajasimul Ground (Mouza-Bara Banpur, JI No- 677, Plot No- 65,67,68)	N-22°20'41.05"	E-87°03'45.18"
2.		Jhargram Rajabari Ground (Near jhargram Rajbari Under Jhargram municipalty word No. 11)	N-22°25'46.52"	E-86°59'54.82"
3.		Pukuria Rajpara Football Ground	N-22°25'12.5"	E-86°58'15.5"
4.	Nayagram	Kharika Netaji Sadharan Pathagar & Club Ground	N-22°00' 29.3"	E-87°08' 35.6"
5.	Gopiballavpur-I	Chhatinasole Tarun Sangha Football Ground	N-22°11' 29.9"	E-86°55'25.6"
6.	Binpur-II	Muransole Kurumutu Club Ground	N-22°37' 58.97"	E-86°45' 56.60"
7.		Belpahari S.C. High School Ground	N-22°38' 6.72"	E-86°45' 50.56"
8.	Sankrail	Hatibandhi Play Ground	N-22°9' 36.33"	E-87°5' 6.32"

20. List of Places Suitable for Air Dropping of Relief Materials

Jhargram	<ol style="list-style-type: none"> 1. Gajasimul Ground (Mouza-Bara Banpur, JI No- 677, Plot No- 65,67,68) (N-22°20'41.05" E-87°03'45.18") 2. Jhargram Rajabari Ground (Near jhargram Rajbari Under Jhargram municipalty word No. 11) (N-22°25'46.52" E-86°59'54.82") 3. Pukuria Rajpara Football Ground (N-22°25'12.5" E-86°58'15.5") 4. Jhargram Jamda Circus Maidan (N-22°28'3.16" E-86°59'29.55")
Gopiballavpur-I	<ol style="list-style-type: none"> 1. Satma Gram Panchayat, JL-10 2. Hatibari Gram Panchayat, JL-01 3. Karbonia Gram Panchayat, JL-73 4. Asanboni Gram Panchayat, JL-65 5. Gopiballavpur Gram Panchayat, JL-208
Gopiballavpur-II	<ol style="list-style-type: none"> 1. Gangabandh (Pathbindhi G.P.) , JL-884 2. Baldi (Nota G.P.) , JL-93 3. Rentua (Kuliana G.P.) , JL-202 4. Ghoraidanga, JL-280
Sankrail	<ol style="list-style-type: none"> 1. Rohini, JL -252 2. Dahi, JL-104 3. Bishnupur, JL-263 4. Salboni, JL-98 5. Laudaha, JL-279 6. Rogra, JL-59 7. Kukrakhupi, JL-48 8. Amaldari, JL-244
Nayagram	<ol style="list-style-type: none"> 1. Kharikamathani Football ground, JL-148 2. Kalmapukuria High School ground, JL-75 3. Jamirpal Hospital ground, JL-235 4. Patina Jr. High School ground, JL-07

Binpur-I	<ol style="list-style-type: none"> 1. Lalgah High School ground, JL-790 2. Gohemidanga High School ground, JL-879 3. Dharampur School ground, JL-867 4. Nachinpur High School, JL-571 5. Belatikri Jamda Road, 762 6. Rana Rani High School, JL-735 7. Kantapahari Football ground, JL-591 8. Binpur Hospital Ground, JL-426 9. Andhari R.B. High School, JL-945
-----------------	---

21. RELIEF GODOWN UNDER JHARGRAM DISTRICT

Sl. No.	Name of Sub-Division / Block	Land schedule	Latitude (N)	Longitude(E)
1.	BDO Sankrail	<ul style="list-style-type: none"> • J.L. No. 252 • Mouza- Rohoni, Plot No. 315&316 	22°09' 8.47"(N)	87°05'3.16"(E)
2.	BDO Binpur-I	<ul style="list-style-type: none"> • J.L. No. 790 • Plot No. 33/659 	22° 35' 38.0"(N)	87°03' 24.4"(E)
3.	BDO Binpur-II	<ul style="list-style-type: none"> • J.L. No. 190 • Mouza- Muransole, Plot No. 74 	22° 39' 06.96"(N)	87° 03' 24.4"(E)
4.	BDO Gopiballavpur-I	<ul style="list-style-type: none"> • J.L. No. 257 • Mouza- Chhatinasole, Plot No. 424 	22° 11' 30.70"(N)	86° 55' 22.60"(E)
5.	BDO Gopiballavpur-II	<ul style="list-style-type: none"> • J.L. No. 287 • Mouza- Beliaberah, Plot No. 190 	22° 16' 04.6"(N)	86° 57' 14.9"(E)
6.	BDO Jamboni	<ul style="list-style-type: none"> • J.L. No. 113 • Mouza- Kherejora, Plot No. 125/247 	21° 47' (N)	86° 40'(E)
7.	SDOJhargram	<ul style="list-style-type: none"> • J.L. No. 395 • Mouza- Jangalkhash, 	22° 45'31.5"(N)	86° 9' 97.77"(E)
8.	BDOJhargram	<ul style="list-style-type: none"> • J.L. No. 395 • Mouza- Jangalkhash, Plot No. 782 	22° 26' 52.89"(N)	87° 00'17.94"(E)
9.	BDO Nayagram	<ul style="list-style-type: none"> • J.L. No. 266 • Mouza- Baligeria, Plot No. 102 	21° 59' 02.7"(N)	87° 06' 25.8"(E)

22. LIST OF CAMPING SITES IN JHARGRAM DISTRICT

22.1. JHARGRAM BLOCK

- | | |
|--|----------------------------------|
| 1. Sevayatan High School, | 10. All Pry. School, |
| 2. Sevayatan Girls' School, | 11. Joypur Pry. School, |
| 3. Dakshinsole Pry. School, | 12. Muraboni MSK, |
| 4. Community Hall, Badhora, Baida Pry. School, | 13. Indardanga Pry. School, |
| 5. Amjhuki Pry. School, | 14. Garmohan Pry. School, |
| 6. Ranchandrapur Pry. School, | 15. Kismat Balijuri Pry. School, |
| 7. Nedabahara GP Office, | 16. Khalsiuli High School, |
| 8. Nedabahara Pry. School, | 17. Chowkichati Pry. School, |
| 9. Salboni GP Office, | 18. Bardanga Jr. High School, |

19. Sagarbhanga Pry. School,

24. Patasimul SC High School,

20. Naharia Pry. School,

25. Asti Pry. School,

21. Aguiboni Pry. School,

26. Salguria Pry. School,

27. Aushpal Pry. School,

22. Ektal High School,

28. Prantik Service Station,

23. Baitagobindapur Pry. School,

29. Tuna Carage,

22.2. BINPUR-I BLOCK

1. Baita Srigopal Jr. High School, JL-901

13. Dalarampur Primary School,JL-468

2. Baita Primary School, JL-901

14. Papatpur Primary School,JL-478

3. Barkola Jr. High School,JL-817

15. Nachipur High School,JL-571

4. Gohomindanga High School,JL-879

16. Lalghata Primary School,JL-567

5. Bamalsini Primary School,JL-808

17. Khosaguri Primary School,JL-707

6. Chamtiarah Primary School,JL-803

18. Tilaboni High School,JL-463

7. Damujana Primary School,JL-811

19. Muraboni High School,-723

8. Lalgah R.K.Vidyapith,JL-790

20. Ranarani High School,JL-735

9. Lalgah Saradmoni Jr.High,

21. Fullerha Primary School,JL-909

School & Lalgah Pry.School JL-790

2. Balarampur Primary School,986

10. Birkanath Pry. School,JL-771

23. Dahijuri Mahatma Vidyapith,970

11. Kanthapahari Vidyapith, JL-591

24. Belatikri Primary School,762

12. Sijua Primary School, JL-572

22.3. SANKRAIL BLOCK

Name of school used as rescue shelter	Lat (N)	Long (E)
Rohini CRD High School	22.16419	87.08794
Ragra RNM Acadamy	22.18182	87.0304
Andhari Pry. School	22.17795	87.0678
Chhatri Jr. High School	22.23453	87.08853
Chhorda High School	22.24608	87.2212
Gobindapur Pry. School	22.24449	87.16101
Laudaha V A S T High School	22.14054	87.12802
Kalrui Pry. School	22.12186	87.12503
Bhangagarh BPHC	22.19245	87.21212

22.4. NAYAGRAM BLOCK

Name of rescue shelter with location and address	Lat. (N) & Long. (E)	
Patina S C High school	22°09'44"	87°00'14"
Rangamatia Pry. School	22°09'10"	87°01'21"
Pathardahara Pry. School	22°06'28"	87°01'12"
Kashia MSK	22°06'22"	86°58'51"
Bachhurkhoard SC Jr High School.	22°07'57"	87°04'01"
Barakhankhri AJKV Jr High School.	22°07'06"	87°05'39"
Kalmapukuria B.S.C.High School	22°08'21"	87°02'42"
Nimainagar MSK	22°03'43"	87°08'15"
Morchi Golapnath SC Jr High School	22°01'28"	87°03'29"
Khorika BMSC H.S. School	22°00'12"	87°08'32"
Nayagram Bani Vidhyapith(HS)	22°01'49"	87°10'15"
Tuphuria Pry. School	22°00'21"	87°11'15"
Khudmorai Gajendra SC High School.	21°58'43"	87°12'32"
Kumarpur Pry. School	21°59'38"	87°12'07"
Govindapur Pry. School	21°57'36"	87°08'43"
Banskuthi Jr High School	21°53'36"	87°03'47"
Baligeria SC High School	21°58'50"	87°06'07"
Nagripada SC Jr High School	21°54'50"	87°02'26"
Satpautia ICDS	21°56'32.49"	87°03' 59.76"

22.5. JAMBANI BLOCK:

Name of rescueshelter	Dimension	Breadth	Capacity
Gidhni Community Hall	Length-41 metre	20 metre	2000
Chichra High School	Length-250 metre	Breadth-55 metre	3500
Parsuli High School	Length - 90 Metre	Breadth- 10 Metre	1000

22.6. GOPIBALLAVPUR I BLOCK:

1. Babudumro High School,	Satma GP / Badudumro
2. Noagaon Community Hall,	Satma GP / Noagon
3. Bangsidharpur Pry. School,	Satma GP / Bangsidharpur
4. Madansole High School,	Amarda GP / Madansole
5. Madansole Pry. School,	Amarda GP / Madansole
6. Janaghati Pry. School,	Amarda GP / Janaghati
7. Manichberia Pry. School,	Amarda GP / Manichberia
8. Athangi Pry. School,	Amarda GP / Athangi
9. Morko Pry. School,	Sasra GP / Morko
10. Sasra Pry. School,	Sasra GP / Sasra
11. Tikayatpur Pry. School,	Sasra GP / Tikayatpur
12. Panchkahania High School,	Sasra GP / Panchkahania
13. Betkala Pry. School,	Sasra GP / Betkala
14. Shyamsundar Pry. School,	Saria GP / Shyamsundar
15. Sumitrapur Community Hall,	Saria GP / Sumitrapur
16. Ashui High School,	Saria GP / Ashui
17. Kaima Pry. School,	Saria GP / Kaima
18. Nayabasan J.K. Vidyapith	Gopiballavpur GP / Nayabasan
19. Sijua Pry. School,	Gopiballavpur GP / Sijua
20. Kapasia Pry. School,	Gopiballavpur GP / Kapasia
21. Subarnarekha College,	Gopiballavpur GP / Subarnarekha
22. Parulia Pry. School,	Gopiballavpur GP / Parulia
23. Topgeria Pry. School,	Alampur GP / Topgeria
24. Tentulia Pry. School,	Alampur GP / Tentulia
25. Gopalpur Pry. School	Alampur GP / Gopalpur
26. Bankra SS Vidyapith	Alampur GP / Bankra
27. Nimdiha Pry. School	Alampur GP / Nimdiha
28. Bhola Pry. School	Kendugari GP / Bhola
29. B.A.B. MSK	Kendugari GP / B.A.B
30. Mahipal Pry. School	Kendugari GP / Mahipal

22.7. GOIBALLAVPUR II BLOCK

1. Chorchita High School,	Chorchita GP / Chorchita
2. Kolesole Pry. School,	Chorchita GP / Kolesole.
3. Askola Pry. School,	Nota GP / Asksola
4. Dhadangri High School,	Nota GP / Asksola
5. Gohalura MSK	Tapsia GP / Gohalura
6. Sardiha Pry. School	Tapsia GP / Sardiha
7. Paikambi High School	Tapsia GP / Paikambi
8. Malincha High School & Pry. School	Kuliana GP / Malincha
9. Gundurghora Pry. School	Kuliana GP / Gundurghora
10. Rantua High School	Kuliana GP / Rantua
11. Beliaberah High School	Kuliana GP / Beliaberah
12. Balipal Pry. School	Kharbandi GP / Balipal
13. Ramchandrapur High School	Kharbandi GP / Ramchandrapur
14. Amdapal Pry. School	Kharbandi GP / Amdapal
15. Panchrkuhi Pry. School	Kharbandi GP / Panchrkuhi
16. Petbindhi DKM High School	Petbindhi GP / Petbidhi
17. Dangria Pry. School	Petbindhi GP / Dangria
18. Baghuasole High School	Petbindhi GP / Baghuasole
19. Mahapal High School	Petbindhi GP / Mahapal

22.8. BINPURII BLOCK

Block Flood Shelter



23. CONTACTS OF IMPORTANT OFFICIALS OF JHARGRAM DISTRICT

• Contact No. of District Level Officers, Jhargram:-

Sl. No.	Name of Officer	Designation	Mobile No.
1	Shri Sunil Agarwal WBCS (Exe)	District Magistrate	8348101000
2	Shri Pijush Kanti Goswami WBCS(Exe.)	Add. District Magistrate (G)	7719364401
3	Shri Prasanjit Chakraborty WBCS (Exe.)	Add. District Magistrate (D)	7719364501
4	Shri Dhiman Barai IAS	Add. District Magistrate (LR)	7719364409
5	Shri Avneet Punia IAS	Add. District Magistrate (ZP)	9732382281
6	Dr. Babulal Mahata WBCS (Exe.)	Sub Divisional Officer	8348691722/ 9933390773
7	Shri Santanu Ghosh WBCS(Exe.)	Dy. Sec, in-Charge ZP	8918548935
8	Shri Pratul Bhunia WBCS (Exe.)	DPLO	7719364502
9	Shri Ananya Jana WBCS (Exe.)	DP & RDO	8972551212
10	Smt. Dipanwita Patra WBCS (Exe.)	DM & DC	7719364415
11	Shri Kaushik Mukherjee WBCS (Exe.)	DM & DC	9434633873
12	Shri Shubhrangshu Mandal WBCS (Exe.)	DOMA	7908670729
13	Shri Shankha Subhra Dey WBCS (Exe.)	DM & FC	9734192480
14	Shri Basudeb Sarkar WBCS (Exe.)	DM & DC	9477179159
15	Shri Pralay Kumar Sarkar WBCS (Exe.)	DM & DC	9734088139
16	Shri Sanjay Malakar WBCS (Exe.)	DM & DC	9434985365
17	Shri Debasis Manna WBCS (Exe.)	DM & DC	7980002382
18	Shri Ramal Singh Birdi WBCS (Exe.)	DM & DC & NDC	9163400428
19	Shri Anup Mandal WBCS (Exe)	Dy. DL & LRO	9732687292
20	Shri Alok Purohit WBCS (Exe)	DM & DC	9434459601
21	Shri Rabindranath Gayen	DDMO	9073936745
22	Shri Amit Kumar Datta	RTO	9830934932
23	Shri Sibsankar Das	WBA & AS	9434161560

• Contact No. of Block Development Officers Under Jhargram District:-

Sl. No.	Name of Officer	Designation	Mobile No.
1	Abhigna Chakraborty WBCS (Exe.)	BDO, Jhargram	8348691751
2	Saikat De WBCS (Exe.)	BDO, Jamboni	8348691755
3	Anal Sarkar WBCS (Exe.)	BDO, Binpur-I	8348691757
4	Barendra Nath Bandyopadhyay WBCS (Exe.)	BDO, Binpur-II	8348691758
5	Debjyoti Patra WBCS (Exe.)	BDO, Gopiballavpur-I	8348691753
6	Nilotpal Chakraborty WBCS (Exe.)	BDO, Gopiballavpur-II	8348691754
7	Rohan Ghosh WBCS (Exe.)	BDO, Sankrail	8348691756/8240750906
8	Rituparna Chatterjee WBCS (Exe.)	BDO, Nayagram	9476185153

• Contact No. of Police Administration, Jhargram:-

Sl. No.	Name of Officer	Designation	Mobile No.
1	Shri Arijit Sinha, IPS	SP, Jhargram	9083269600
2	Shri Kalyan Sarkar, WBPS	Addl. SP, Jhargram HQ	9083269601
3	Shri Uttam Ghosh, WBPS	Addl. SP, (Ops.) Jhargram	9083269628
4	Bishnupada Bera	DSP HQ	9083269602
5	Shri Sabyasachi Ghosh	DSP(D&T)	9083269607
6	Shri Dhruvajyoti Mukhopadhyay	DSP, DIB	9083269606
7	Anindasundar Bhattacharya, WBPS	SDPO, Jhargram	9083209603
8	Amit Adhikary	IC, Jamboni	9083269612
9	Swarup Basak	IC, Binpur PS	9083269615
10	Biswajit Biswas	IC, Belpahari	9083269616
11	Sudip Banerjee	IC, Gopiballavpur	9083269611
12	Sudip Palodhi	OC, Beliaberah	9083269618
13	SI Khandkar Saifuddin Ahamad	OC, Sankrail	9083269617
14	Prasun Mitra	IC, Nayagram	9083269614

15	Arindam Bhattacharya	IC, Lalgarh	9083269523
16	Pranab Kanti Sahoo	IC, Jhargram	9083269613

• **Contact No. of Jhargram Municipality, Jhargram:-**

1.	Sri Horihar Bala	Excutive Officer JGM Municipality	9733056465
----	------------------	-----------------------------------	------------

• **District Level Officers (Line Department):-**

Sl. No.	Officer	Mobile No.
1	DFO, Jhargram	8807408741
2	DCF & S, Jhargram	7604068637
3	ARCS, Jhargram	6289450717
4	DICO, Jhargram	7407911188
5	SDI & CO, Jhargram	6296263825
6	DI, Primary, Jhargram	8240483609
7	AIS & DI of Schools (P/E)	7980568482
8	Asst. Engineer Jhargram ZP (ADL)	9434322392
9	Asst. Controller Legal Metrology	8371002426
10	AD (BAE & S) Addl. Charge Jhargram	9681105823
11	DDA (Admn), Jhargram	9474507117
12	EE PWD Roads	8777469618
13	EE PWD Civil	9836490857
14	ALC, Jhargram	9830671375
15	EE Housing Deptt.	9547227747
16	ACMOH, Jhargram	9474735857
17	AE (PWD) Elec. Jhargram	9874157715
18	EE PWD Elec. Jhargram	9007754193
19	AE PWD Civil. Jhargram	6297515361
20	ADEM/ JGM Ac Rly. Jhargram	9002081208
21	Div. Manager Jhargram Divisional WBSEDCL	7479000700
22	Exise Superintendent	9433506954
23	SDLRO, Jhargram	7001657714
24	Post Master of District	03221-255044
25	Asstt. Controller of Legal Metrology	8371002426
26	Asstt. Director Consumer Affairs	8910654811
27	AXE. ENGINEER, WRIDD	9434510310
28	ARD, Jhargram (Deputy Director)	9433450638
29	ADA, Jhargram (Soil Con. DPAP)	9733683465
30	Asst. Director of Fisheries	9748334176
31	SCF & S, Jhargram	9748332234
32	Asst. LAO, Jhargram	9734686785
33	DHO	9474470392
34	ADH	7098074816
35	Asst. Engineer(AM) Jhargram-I Sub-Division	03221255163
36	Asst. Engineer (AM) Jhargram-II Sub-Division	03221255163
37	Executive Engineer, Agri-Irrigation, Jhargram	9434510310

- **Contact Number of Officers under ARD Department, Jhargram:-**

District Level –Jhargram	Block	Phone No.
1 Dr.Kushal Pal DDARD, 9433450638	Jhargram	9800815250
2. Dr. Chanchal Dutta ADVRI,9609432425	Jamboni	9474303325
3. Dr. Sulata Mondal VO,SAHC, Jhargram,9432190870	Gopiballavpur-I	9434689207
4. Kumaresh Biswas, Pharmacist, SAHC Jhargram, 8513963991	Gopiballavpur-II	9635038392
5. Sudhir Chandra Mahata, Gr-D, SAHC Jhargram,	Sankrail	9732614756
6. Himanshu Mahata, Gr-D, SAHC Jhargram	Nayagram	8001129924
7. Dr. Debasis Karmakar Asst. Director, 9126420114	Binpur-I	7551863964
8. Amlan Roy, Asst. Superintendent, Live Stock, 9433194102	Binpur-II	7604010585

- **List of Contact Numbers of Officers under Health Department:-**

Sl. No.	Name of Officer	Designation	Mobile Phone No.
1	Dr Prakash Mridha	CMOH	8250995306
2	Dr Santanu Sahu	Dy. CMOH - I	9434385559
3	Dr Trideep Das	Dy. CMOH - II	8910695960
4	Dr Sumana Dasgupta	Dy. CMOH - III	9830839314
5	Dr Prithwis Akhuli	DMCHO	9733751670
6	Dr. Goutam Paik	DTO	8777609682
7	Dr. Manojit Biswas	ACMOH	8967914180
8	Dr. Indranil Sarkar	Superintendent, Jhargram DH & SSH	8250995321
9	Dr. Bidyut Patar	Superintendent, Gopiballavpur SSH	8622801526
10	Dr. Debasish Mahata	Superintendent-in-Charge, Nayagram SSH	7001569221
11	Dr. Jayanta Mahata	BMOH, Binpur RH	8972019166
12	Dr. Amarendra Nath Roy	BMOH, Belpahari RH	9831904742
13	Dr. Sitanath Hansda	BMOH, Gopiballavpur RH	9748780427
14	Dr. Kingsuk Roy	BMOH, Tapsia RH	8001940402
15	Dr. Basab Bijoyee Shit	BMOH, Bhangagarh RH	8250995331
16	Dr. Debasish Mahata	BMOH, Kharikamathani RH	7001569221
17	Dr. Krishnendu Dandapat	BMOH, Mohanpur RH	7501920837
18	Dr Prasenjit Nayek	Chilkgarh RH	8016249826
19	Dr. Kabita Ghosh	MOIC, Andharia P.H.C.	9434453768
20	Dr. Umul Murmu	MOIC, Dharampur P.H.C.	7407195601
21	Vacant	MOIC, Laghata P.H.C.	---
22	Dr. Dilip Kumar Bhakta	MOIC, Lalgarh P.H.C.	8348160489
23	Dr. Mongal Hembram	MOIC, Ramgarh P.H.C.	9475143622
24	Vacant	MOIC, Ergoda P.H.C.	---
25	Dr Chinmoy Dey	MOIC, Odulchua P.H.C.	9830326518
26	Dr Beby Baskey	MOIC, Silda P.H.C.	7407552977
27	Dr. Supta Bej	MOIC, Alampur P.H.C.	9474756764
28	Vacant	MOIC, Dhansole P.H.C.	---
29	Dr. Sanjib Majhi	MOIC, Sasra P.H.C.	9775083600

30	Dr Sushobhan Das	MOIC, Nota P.H.C.	8967593241
31	Dr Manima Sing	MOIC, Ramchandrapur P.H.C.	9679021856
32	Vacant	MOIC, Tentulia P.H.C.	---
33	Dr. Rupayan Roy	MOIC, Chinchira P.H.C.	9733711322
34	Dr. Sanchay Pandey	MOIC, Kapgari P.H.C.	7289942850
35	Vacant	MOIC, Chandri P.H.C.	---
36	Dr. Dola Banerjee	MOIC, Chubka P.H.C.	7797521107
37	Dr. Subhendu Dey	MOIC, Lauriadam P.H.C.	9051022488
38	Dr. Amal Murmu	MOIC, Manikpara P.H.C.	9474972965
39	Vacant	MOIC, Beligeria P.H.C.	---
40	Vacant	MOIC, Chandabila P.H.C.	---
41	Dr Sujata Roy	MOIC, Jamirapal P.H.C.	9647230424
42	Vacant	MOIC, Kultikri P.H.C.	---
43	Vacant	MOIC, Pathra P.H.C.	---

- **Quick Response Team (QRT) formed under Jhargram Division PWD to combat cyclone:-**

District	Division	Sub-Division	Section	Team Leader	QRT	QRT Station	Members	Equipments	Personnel	Remarks
Jhargram	Jhargram Division PWD	Jhargram Sub-division, PWD Pradip Kumar Biswas (A.E.) (M) 6297515361	Jhargram Section	Utpal Bar(M) 7001624146	QRT-1	PWD Division Office Building	Swapan Shit (M) 6295553499 ShyamSundar Banik (M) 9735348794	JCB with operator (01), Tractor /Pick Van-(01); Tree cutting Saw; Diesel Operated (02); Manual Saw (01) Axe (02)	Operator (06) Labour (08)	All Roads under Jhargram Section
			Lidhasuli Section	Bubai Kumar Ghosh(M) 9434172945	QRT-2	PWD Division Office Building	Swapan Shit(M) 6295553499 ShyamSundar Banik(M) 9735348794	- Do -	- Do -	All Roads under Lodhasuli Section
Jhargram	Jhargram Division PWD	Gopiballavpur Sub-division, PWD Md. Murshid Alam (A.E.) (M) 9903246608	Gopi-Section-I	Jayajiy Roy(M) 8371800504	QRT-3	Gopiballav pur	Manik Singh 7557027953 Sudip Karmakar 9474301628	- Do -	- Do -	All Roads under Gopiballavpur Section-I
			Gopi-Section-II	Rathin Kumar Mondal(M) 9432120391	QRT-4	Keshiary	Alok Rana 9732419422 Jishu Jana 9733707402	- Do -	- Do -	All Roads under Gopiballavpur Section-II
			Gopi-Section-III	Bijoy Kumrar Singh(M) 9933792103	QRT-5	Sankrail	Sunil Murmu 7076818648 Ashish Murmu 8145334520	- Do -	- Do -	All Roads under Gopiballavpur Section-III

• **Contact Number of Food & Supplies Department, Jhargram:-**

Sl. No.	Name of the Officer	Designation	Contact No.
1.	Sujit Halder	DCF & S	9007588470
2.	Md. Shadab Khan	SDCF & S	8670518244

District Storing Agent with Phone No.	Sl. No.	Block/Municipality	Sanctioned Unit	G.R dealer who received the G.R. from Dist. Storing Agent	Phone no. of dealer
Sri Sukendu Chakraborty 9932035558	1	Binpur-I	129	BDO Office	8348691757
	2	Binpur-II	150	Sri Tapan Kumar Mallick	9732875144
	3	Gopi-I	50	Dilip Sahoo	9732709509
	4	Gopi-II	48	Kamalendu Paira	9064547659
	5	Sankrail	87	Bomkesh Sahoo	9932929150
	6	Nayagram	50	Lamp, Chunaram Murmu	9800184089

	7	Jhargram	224	Gurupada Kundu	9932322584
	8	Jamboni	378	Paramananda Panda	9732690240
	9	Jhargram Municipality	246	Sri Sukendu Chakraborty	9932035558
Total-					

• **Forest Department of Jhargram District:-**

Sl. No.	Name/Designation	Area covered	Mobile phone No.
1.	ADFO, Jhargram	Jhargram, Jamboni, Binpur-II, Gopi-I, Gopi-II & Binpur-I Part	9432094812
2.	ADFO, Kharagpur	Sankrail & Nayagram Block	7872851608
3.	ADFO, Medinapur	Binpur-I Part	9775201177
4.	Purnendu Shit, DR/Fr.	Jhargram	9382219327
5.	Utpal Kumar Mondal, DR/Fr.	Jamboni	9614210644
6.	Uttam Kumar Mukherjee, DR/Fr.	Gopiballavpur-I	8116868501
7.	Tarun Kumar Sing, DR/Fr.	Gopiballavpur-II	7602356031
8.	Chittaranjan Maity, DR/Fr.	Binpur-I	8900261240
9.	Somnath Ghosh, DR/Fr.	Binpur-II	9800922044
10.	Raj Kumar Kar, DR/Fr.	Jhargram Municipality	9641247014
11.	Sri. Sambhu Charan Nayek	Nayagram	9064746613
12.	Akhtar Hossin	Nayagram, Chandabila	6296053822
13.	Sri. Dilip Mahato	Nayagram, Keshorrekha	9832953920
14.	Sri. Subhasish Sinha	Sankrail, Kalaikunda	9475190700

• **Contact Number of Block Level Inspector (F & S):-**

Sl. No.	Name of the Inspector/S.I	Block	Contact No.
1.	Prabodh Chandra Garai	Binpur-I	9732567020
2.	Pijus Das	Binpur-II	8436748962
3.	Dhananjoy Halder	Jamboni	7908762423
4.	Subhendu Maji	Gopiballavpur-I	9474403334
5.	Dhananjoy Halder	Gopiballavpur-II	7908762423
6.	Jamini Kanta Nanda	Nayagram	9732013163
7.	Prabodh Chandra Garai	Sankrail	9732567020
8.	Subhendu Maji	Jhargram	9474403334
9.	Biswajit Singh	Jhargra Municipality	8918541538

* **List of 100 Successful trend Aapda Mitra Volunteers in Jhargram District.**

Sl. No.	Name	Mobile Number	Residential address Block Name
1	Nivas Ranjan Das	7384975848	Sankrail
2	Souvik Khutia	8972317229	Sankrail
3	Tinku Giri	9749209897	Sankrail
4	Souman Das	6295958040	Sankrail
5	Chiranjit Rana	9749268593	Sankrail
6	Rahul Basanta	8653076483	Sankrail
7	Moumita Jana	7063300855	Sankrail
8	Sambhu Mahata	8972785509	Sankrail
9	Arati Saren	7029015858	Sankrail
10	Banashre Mahata	7679168652	Sankrail
11	Munna Mahata	6294132305	Sankrail

12	Surajit Mandal	9749842061	Sankrail
13	Madhusudan Rana	6026386518	Sankrail
14	Shibu Bhunia	8670298887	Sankrail
15	Amal Dalai	7602104503	Sankrail
16	Sayan Pradhan	9093709992	Sankrail
17	Pratima Malik	8509463668	Sankrail
18	Sourav Jana	8158981881	Nayagram
19	Nitay Nayek	9635934345	Nayagram
20	Siladitya Bhunia	9265608185	Nayagram
21	Mamoni Patra	8436646672	Nayagram
22	Alpana Hembram	7595887399	Nayagram
23	Bhagyadip Singha	9064038138	Gopi-I
24	Souvik Jana	9635487046	Gopi-I
25	Chanchala Nayek	8597489025	Gopi-I
26	Amit Kr. Dey	7586819138	Gopi-I
27	Bimal Hansda	6294919055	Gopi-I
28	Ranjit Khamri	8967635556	Gopi-I
29	Hemanta Ghosh	7319515948	Gopi-I
30	Saktipada Bera	7477539044	Gopi-I
31	Rajib Kumar Mahapatra	8207238936	Gopi-II
32	Sandip Bag	9800703184	Gopi-II
33	Jhotan Ghosh	9932689381	Gopi-II
34	Satyanranjan Barik	8972978081	Gopi-II
35	Subhajit Barik	9609269439	Gopi-II
36	Dipak Dehuri	9635161863	Gopi-II
37	Sourav Senapati	9064815818	Gopi-II
38	Madhumita Patar	6294234612	Gopi-II
39	Saroj Kumar Sing	8918572694	Gopi-II
40	Amit Bhuniya	8240281714	Gopi-II
41	Ankit Santra	9800231664	Gopi-II
42	Rakesh Maity	6294639521	Gopi-II
43	Saroj Santra	7477763328	Gopi-II
44	Manas Rana	8637869283	Gopi-II
45	Dip Kumar Senapati	8918539481	Gopi-II
46	Prakash Nath	9679015152	Gopi-II
47	Suraj Paira	9635991723	Gopi-II
48	Ganesh Khamri	7364857213	Gopi-II
49	Tapan Paul	9800423468	Gopi-II
50	Santu Kr. Ghosh	6294179278	Gopi-II
51	Mahadeb Giri	8637343318	Gopi-II
52	Asit Bhuniya	9002334032	Gopi-II
53	Pijush Ghosh	9933066567	Gopi-II
54	Binoy Mahata	9002174915	Jhargram
55	Asit Kr. Mahata	7076929213	Jhargram
56	Probodh Mahata	8967960520	Jhargram
57	Kalyan Mahata	8159048519	Jhargram
58	Chaitak Mahata	6296709974	Jhargram
59	Biplab Mahata	6295517937	Jhargram
60	Anjan Singh	9635382483	Jhargram

61	Gangadhar Murmu	6294860495	Jhargram
62	Joydeep Mahata	9064116456	Jhargram
63	Santanu Mahata	9635500134	Jhargram
64	Nantu Mahata	7908520682	Jhargram
65	Shyam Charan Hembram	6297497182	Jhargram
66	Kalyan Mahata	7477548499	Jhargram
67	Srimanta Mahata	7602711775	Jhargram
68	Kajal Mahata	9609730607	Jhargram
69	Indrajit Shit	9002417144	Jhargram
70	Sanju Ray	7001831780	Jhargram
71	Shyamal Mahata	9800056370	Jhargram
72	Lita Hansda	9734622093	Jhargram
73	Bapi Saren	8967455090	Jhargram
74	Subhadip Das	9641435357	Jhargram
75	Karuna Mahata	7551874694	Binpur-I
76	Mallick Hansda	8967066578	Binpur-I
77	Prasanta Roy	7586929068	Binpur-I
78	Paban Mahata	8670086283	Binpur-I
79	Swapan Mahata	9679616136	Binpur-I
80	Dhananjay Mahata	6294126610	Binpur-I
81	Jatin Mahata	6297882818	Binpur-I
82	Uttam Mandi	9800593836	Binpur-I
83	Sanjay Mahata	7001062520	Binpur-I
84	Tusta Mahata	8617073963	Binpur-I
85	Somen Murmu	9647879407	Binpur-I
86	Bibhas Murmu	7584966408	Binpur-I
87	Sonu Mukhi	8348188152	Binpur-II
88	Kabita Murmu	9002639848	Binpur-II
89	Kherwal Bir Saren	6295351167	Binpur-II
90	Marshal Murmu	9775177961	Binpur-II
91	Basudev Pal	7679801350	Binpur-II
92	Dipak Das	7001172796	Jamboni
93	Uttam Mahata	9083620269	Jamboni
94	Dipankar Das	6295677632	Jamboni
95	Chandrai Mandi	6296535332	Jamboni
96	Mrinmay Das	9932720159	Jamboni
97	Maheswar Murmu	8509457490	Jamboni
98	Rajendranath Saren	8101577708	Jamboni
99	Soumyadip Mahata	7001684102	Jamboni
100	Ananda Shaw	9064987853	Jamboni

• **Name list of the Officer & Personnels & Others of Jhargram Fire Station:-**

Sl. No.	Name	Rank	Mobile Number
1	Jadunath Hembram	Station Officer	9732850627
2	Ranjit Dhak	Leader	9933976536
3	Samir Kumar Sing	„	9732552302
4	Sambhunath Murmu	„	9732552776
5	Charan Murmu		8670984382
6	Shibdas Saren	„	7477387533
7	Palas Modak	F.E.O.D	9593479989

8	Tapan Kumar Roy	„	9932562120
9	Biswajit Pal	„	9734845471
10	Monmatha Sing	„	8001528570
11	Pintu samanta	„	9434104970
12	Amit Kundu	„	9830551101
13	Shaktipada Patra	F.O	7501291901
14	Tuhin Chandra Routh	„	9609289503
15	Swapan Kumar Das	„	9547612082
16	Raghunath Maghi	„	9734404015
17	Utpal Kr Nandi	„	9674288010
18	Tridib Ghosh	„	8946066929
19	Dinesh Mahata	„	9732558453
20	Sk. Manjur Alam	„	9051122323
21	Atanu Maity	„	8436053664
22	Swarup Murmu	A.F.P	6297509132
23	Nantu Das	„	8967136080
24	Souvik Giri	„	7047196780
25	Md. Ibrahim	„	8436114044
26	Santanu Sen	„	9679878255
27	Bivas Majumder	„	7602898323
28	Santanu Maity	„	9002596103
29	Uttam Ghosh	A.F.O	9547995254
30	Subrata Bera	„	9679677989
31	Souvik Das	„	8116225372
32	Kalyan Mahata	„	8348334830
33	Subrata Shit	„	8768412656
34	Mithun Das	„	9134551359
35	Tanmoy Kumar Barik	„	9641940374
36	Indrajit Ghar	A.F.O	9775557585
37	Subhranil Jana	„	8927451010
38	Subrata Ghosh	„	8670317345
39	Dinesh Mahata	„	9933693002
40	Rathindra Nath Hembram	„	9679926300
41	Soumen Das	„	9564546718
42	Tanmoy Kumar Maity	„	8967313937
43	Abhijit Singha	„	9126683946
44	Sahadeb Manna	„	9800092008
45	Sisir Barik	„	7866052853
46	Kanchan Mahata	„	9635975608
47	Hareesh Bhuniya	„	7001245281
48	Sagar Bhuniya	„	8918400366

24. Disaster Management Related Datas of South Eastern Railway (Jhargram Sub- Division)

LOCATIONS VULNERABLE :

1.Manned Level Crossing:

Locations	Inbetween Stations
130/15-17	KHEMASULI – SARDIHA
133/21-23	KHEMASULI – SARDIHA
136/15-17	KHEMASULI – SARDIHA
137/23-25	KHEMASULI – SARDIHA
140/13-15	SARDIHA – JHARGRAM
142/1-3	SARDIHA – JHARGRAM
144/19-21	SARDIHA – JHARGRAM
146/1-3	SARDIHA – JHARGRAM
149/5-7	SARDIHA – JHARGRAM
152/23-25	SARDIHA – JHARGRAM
155/1-3	JHARGRAM – GIDHNI
157/1-3	JHARGRAM – GIDHNI
160/25-161/1	JHARGRAM – GIDHNI
162/5-7	JHARGRAM – GIDHNI
164/15-17	JHARGRAM – GIDHNI
165/19-21	JHARGRAM – GIDHNI
166/25-166/1	JHARGRAM – GIDHNI
168/17-19	JHARGRAM – GIDHNI
169/19-21	GIDHNI – KANIMAHULI
170/19-21	GIDHNI – KANIMAHULI
172/15-17	GIDHNI – KANIMAHULI
173/19-21	GIDHNI – KANIMAHULI

2. Un Manned Level Crossing:

Locations	Inbetween Stations
143/11-13	SARDIHA – JHARGRAM

3. Major Girder Bridges :

Locations	Inbetween Stations
a) 142/23-25	SARDIHA – JHARGRAM
b) 167/11-13	JHARGRAM – GIDHNI

4. Elephant Corridor near Railway Track:

a) SARDIHA – JHARGRAM
b) JHARGRAM – GIDHNI
c) GIDHNI - KANIMAHULI

5. Major Station Yards :

a) SARDIHA – km 138
b) JHARGRAM – km 153
c) GIDHNI – km 168

6. Telephone Numbers :

Assistant Divisional Engineer- Jhargram -9002081208
Station Manager Jhargram – 9002086272

25. Melas in the District where large crowds gather with date & location

1. **Jungle Mahal Utsab:** This year 6th State Jungle Mahal Utsab held on for the period from 22.01.20 to 26.01.20 at the local Nanibala High School Jhargram. The District of Purulia, Bankura, Birbhum and Jhargram participated in the Utsab. Different Govt. & Non Govt. Organization have made their stalls and near about 1(one) Lakh people enjoyed the Utsab. The main attraction of this Utsab is cultural program (Dance, Drama, Songs etc.) which were performed by the local tribal artists.
2. **Jhargram Mela:** Jhargram Mela is one of the important Mela which is held on 23rd January every year since 1976. The Mela is organized by the local people and it is held at Ghoradhora near Jhargram stadium. Local artists display their handicraft, important items made by the bamboos and other necessary items which are essentials for in the local people. More than 1.50 lakh people participate the Mela.
3. **Sabala Mela:** This year, District Sabala Mela held on 20.01.2020 to 25.01.2020 at the ground of officers club, Jhargram. Many Govt. and Non Govt. organization took part in the Mela and near about 25,000 people visited the Mela.
4. **Hul Dibas:** The Hul Dibas of the District is generally held on 30th June every year in the office complex of the District Collector & Sevayatan and Gopiballavpur area. Large no of people participate in the programme.
5. **Chhat Puja:** This year Chhat puja is celebrate in some parts of Jhargram District held on it is generally organised in the bank of Subarnarekha & Kanchaboti River various ponds of Jhargram District. It is also celebrated in the bank of Subarnarekha and Kangsabati River. More than 25,000 people took part in the Chhat puja celebration
6. **Makar Sankranti (Damadar Utsab):** It is another Utsab of this district which held on 16.01.2019 in the bank of the river Subarnarekha at Nayagram, Gopiballavpur and Sankrail. This Utsabis also known as Makar Sankranti which is celebrated by the all section of the people of Jhargram District. The local tribal (Santal) community took part in the Utsab with great enthusiasm.
7. **Republic Day:** This year republic day held on 26th January in the Jhargram Stadium. The national Flag was hoisted by the District Magistrate Jhargram in presence of the Superintendent of Police, Jhargram. Different Govt. organization demonstrated their departmental tableau in the programme. 5,000nos of local people and students of local educational institutions participated in the programme.

8. At a Glance – All Melas at Jhargram

Sl. No.	Name of event/ Mela	Date(Approx.)	Location	No. of gathering
1.	Jungle Mahal Utsab	22.01.2020-26.01.2020	Nanibala High School, Jhargram	1 Lakh
2.	Jhargram Mela	23 rd January Every Year	Ghoradhora near Jhargram Stadium	1.50 Lakh
3.	Sabala Mela	20.01.2020-25.01.2020	Officers Club Ground, Jhargram	25000
4.	Hul Dibas	30 th June Every Year	District Collectorate Compound, Sevayatan, and Gopiballavpur area.	20000
5.	Chhat Puja	13.11.2020	Subarnarekha and Kansabati river.	25000
6.	Makar Sankranti	16.01.2020	Subarnarekha at Nayahram, Gopiballavpur and Sankrail	2.50 Lakh
7.	Republic Day	26.01.2020	Jhargram Stadium	4500

26. LIST OF ACRONYMS

NDMA	National Disaster Management Authority
SDMA	State Disaster Management Authority
DDMA	District Disaster Management Authority
DDMC	District Disaster Management Committee
NCMC	Natural Crisis Management Committee
NCRMP	National Cyclone Risk Mitigation Project
NDRF	National Disaster Response Force
SDRF	State Disaster Response Fund
DDMO	District Disaster Management Officer
BDMO	Block Disaster Management Officer
SDO	Sub-Division Officer
SDDMO	Sub-Divisional Disaster Management Officer
BDO	Block Development Officer
CBDM	Community Based Disaster Management
DMC	Disaster Management Community
NEC	National Executive Committee
NEOC	National Emergency Operation Centre
DMD	Disaster Management Department
GP	Gram Panchayat
NDMF	National Disaster Mitigation Fund
NDRF	National Disaster Response Fund
EWS	Early Warning System
FAO	Food and Agriculture organisation
FMP	Flood Management Planning
GIS	Geographic Information Systems
GOI	Government of India
SCMG	State Crisis Management Group
SMS	Safety Management Systems
SOP	Standard Operating Systems
HRD	Human Resource Development
IRS	Indian Remote Sensing Satellites
ISRO	Indian Space Research Organization
NGO	Non Governmental Organization
NIDM	National Institute of Disaster Management
CBO	Community Based Organisation
DCG	District Crisis Group
IAP	Incident Action Plan
VDMA	Village Disaster Management Authority
T/R/U	Total / Rural / Urban
HRVA	Hazard, Risk&Vulnerability Assessment
ACWC	Area Cyclone Warning Centre
CWDS	Cyclone Warning Dissemination System
EWS	Early Warning System

**Control Room of
Disaster Management Section
Jhargram District**

**Phone No: 03221-258228
Email ID: jhargramdm@gmail.com**