

# FOREWORD

Malda district is a unique district not only in West Bengal but also in the whole of India because of its location advantage. It shares 165.5 km international border with Bangladesh. It shares boundaries with Bihar and Jharkhand in South west and also bounded by North Dinajpur and South Dinajpur in the north , east by Bangladesh and south by Murshidabad respectively. Due to positional advantage and proximity to Bangladesh it is very much important in international trade.

It is called the gate way of North Bengal. It is situated in the midst of Kolkata and Siliguri and separated from the southern districts by the river Ganga. An area of 3733 sq km of land classified as Tal, Diara and Barind stretches in north from 25°32'80" N and 24°40'20" N latitude and its easternmost extremity is 88°28'10" and westernmost is marked by 87°45'50" of longitude.

Malda district consist of two Sub Division, fifteen Blocks and two Municipalities. As per census 2011, total population is appr. 39,97,929 with 52% of Hindu and 48 % of Muslim population. Majority of the population depends on agriculture and other allied industry. This district is also called as “Mango Valley” due to its trade volume nearly about ₹250 crores per year followed by Silk Trade.

This district is highly flood prone. Major rivers are Ganga, Mahananda, Fulohar, Kalindri and Tangon all of them are in eastward motion. As a result this district faces initial thrust of flood water entering from catchment areas i.e Bihar and Jharkhand. Out of fifteen blocks Harishchandrapur-II , Ratua-I, Manikchak, Kaliachak-II and Kaliachak-III block are most vulnerable to flood and erosion . A large no of people are put to hardship to such flood and erosion.

Malda and Murshidabad are plunged by perennial flood problem .Due to eastern tilt of the lay of the land in West Bengal , the gap between the main tributaries of the Ganga-Padma river is closing at a rapid rate with some inter distance being less than 1000 mts. which is reducing day by day.

A series of strong retired embankments should be echeloned in depth over these tributaries to rebut flooding.

Not all disasters, particularly natural disasters, can be prevented but the risk of loss of lives and properties can be mitigated with a good and executable disaster management plan. To meet the emergent situation caused due to flood/erosion a contingency plan 2016-2017 has been devised. To enrich the plan important information/ reports have been received from important offices of this district. Efforts have been made to learn from our earlier mistakes and to incorporate new / innovative ideas in the planning process.

I hope that this action plan would act as a good handbook to all concerned.

**District Magistrate,  
Malda**



# Content

Sl. No.	Items	Page No
1.	District Map	1
2.	Road Map of Malda	2
3.	Vulnerability Map	3
4.	Maps of Important Rivers	4
5.	Brief History of Flood in Malda	5
6.	Scenario of past floods in Malda	7
7.	Some important aspects of Malda	8
8.	District Profile	10
9.	Rainfall / Water level / Stock of Relief Materials	15
10.	Areas vulnerable in respect of Flood	16
11.	District level flood contingency plan	17
12.	Important contact nos.	19
13.	Helipad / High Grounds	23
14.	Ferry Ghat details	24
15.	Do's & Don'ts in respect of all Disasters	28
	<b>Plans of Line Departments</b>	
16.	Contingency Plan of Malda Irrigation Division	37
17.	Contingency Plan of Health Department	40
18.	Contingency Plan of Civil Defence	44
19.	Contingency Plan of Food & Supplies	46
20.	Contingency Plan of Food Processing Industries & Horticulture	49
21.	Contingency Plan of Animal Resources Development	50
22.	Contingency Plan of Public Health Engineering	54
23.	Contingency Plan of Textiles (Sericulture)	55
24.	Contingency Plan of Water Resources investigation & Development	56
25.	Contingency Plan of Agriculture (Admn)	62
26.	Contingency Plan of District Inspector of Schools (SEC. EDN.)	70
27.	Contingency Plan of Indian Red Cross Society	77
	<b>Plans of Blocks &amp; Municipalities</b>	
28.	Contingency Plan of Harischandrapur-II Development Block	78
29.	Contingency Plan of Ratua-I Development Block	90
30.	Contingency Plan of Manikchak Development Block	111
31.	Contingency Plan of Kaliachak-II Development Block	130
32.	Contingency Plan of Kaliachak-III Development Block	189
33.	Contingency Plan of Gazole Development Block	199
34.	Contingency Plan of Bamangola Development Block	231
35.	Contingency Plan of Habibpur Development Block	249
36.	Contingency Plan of Old Malda Development Block	277
37.	Contingency Plan of Englishbazar Development Block	286
38.	Contingency Plan of Kaliachak-I Development Block	297
39.	Contingency Plan of Chanchal-I Development Block	315
40.	Contingency Plan of Chanchal-II Development Block	324
41.	Contingency Plan of Harischandrapur-I Development Block	341
42.	Contingency Plan of Ratua-II Development Block	350
43.	Contingency Plan of Englishbazar Municipality	379
44.	Contingency Plan of Old Malda Municipality	381

\*\*\*\*\*





**INDIA**  
**WEST BENGAL**  
**DISTRICT MALDAH**

KILOMETRES  
0 5 10 15 20 25

DISTRICT DAKSHIN DINAJPUR

DISTRICT UTAR DINAJPUR

DISTRICT MURSHIDABAD

BOUNDARY, INTERNATIONAL .....

" STATE .....  
" DISTRICT .....  
" C. D. BLOCK .....

HEADQUARTERS : DISTRICT, POLICE STATION, C.D. BLOCK .

NATIONAL HIGHWAY ..... NH 34

STATE HIGHWAY ..... SH 10

OTHER IMPORTANT ROADS .....

RAILWAY LINE WITH STATION, BROAD GAUGE .....

RIVER AND STREAM .....

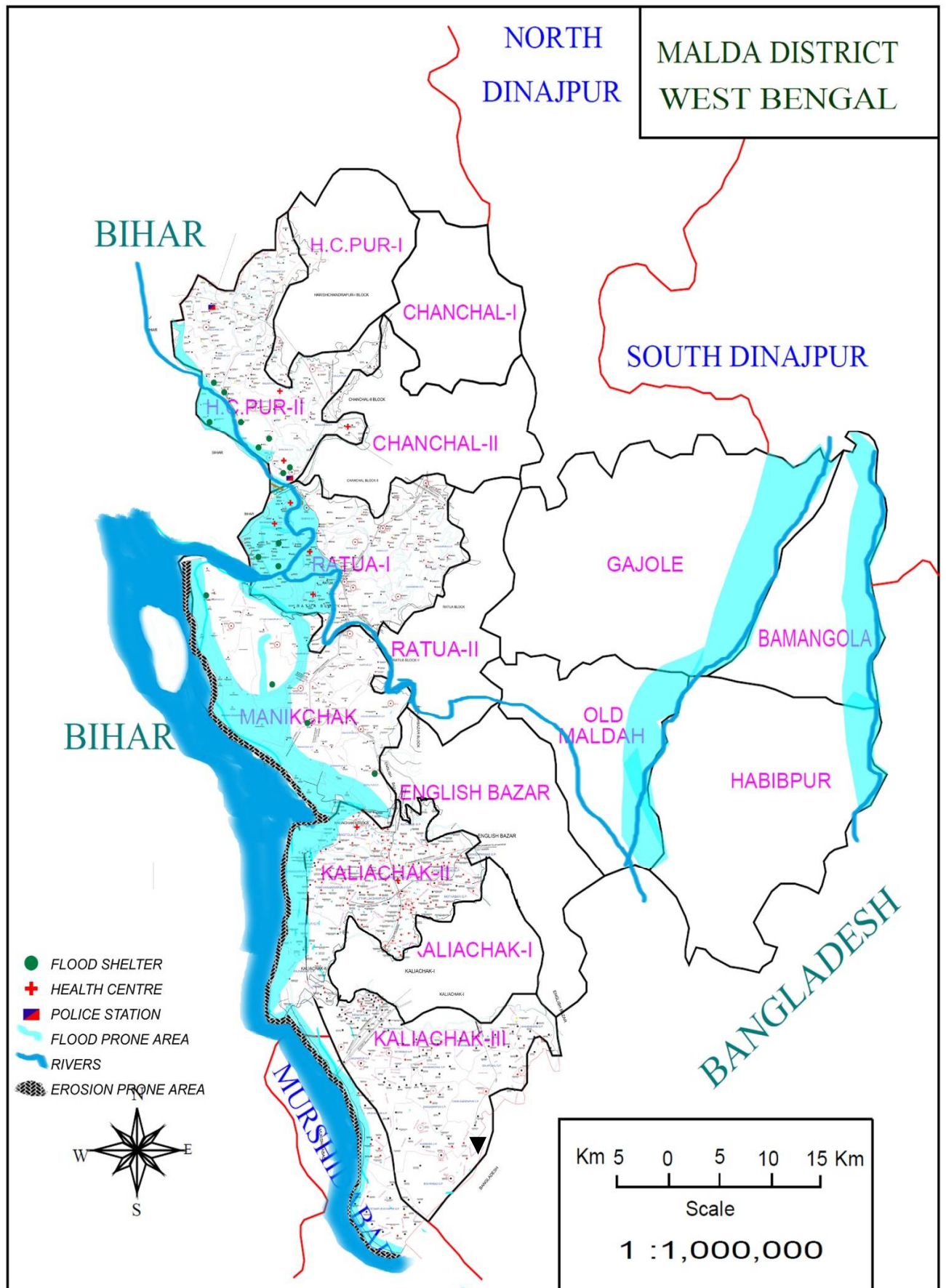
LOCATION OF STATUTORY TOWNS .....

LOCATION OF CENSUS TOWNS .....

## Road Map of Malda

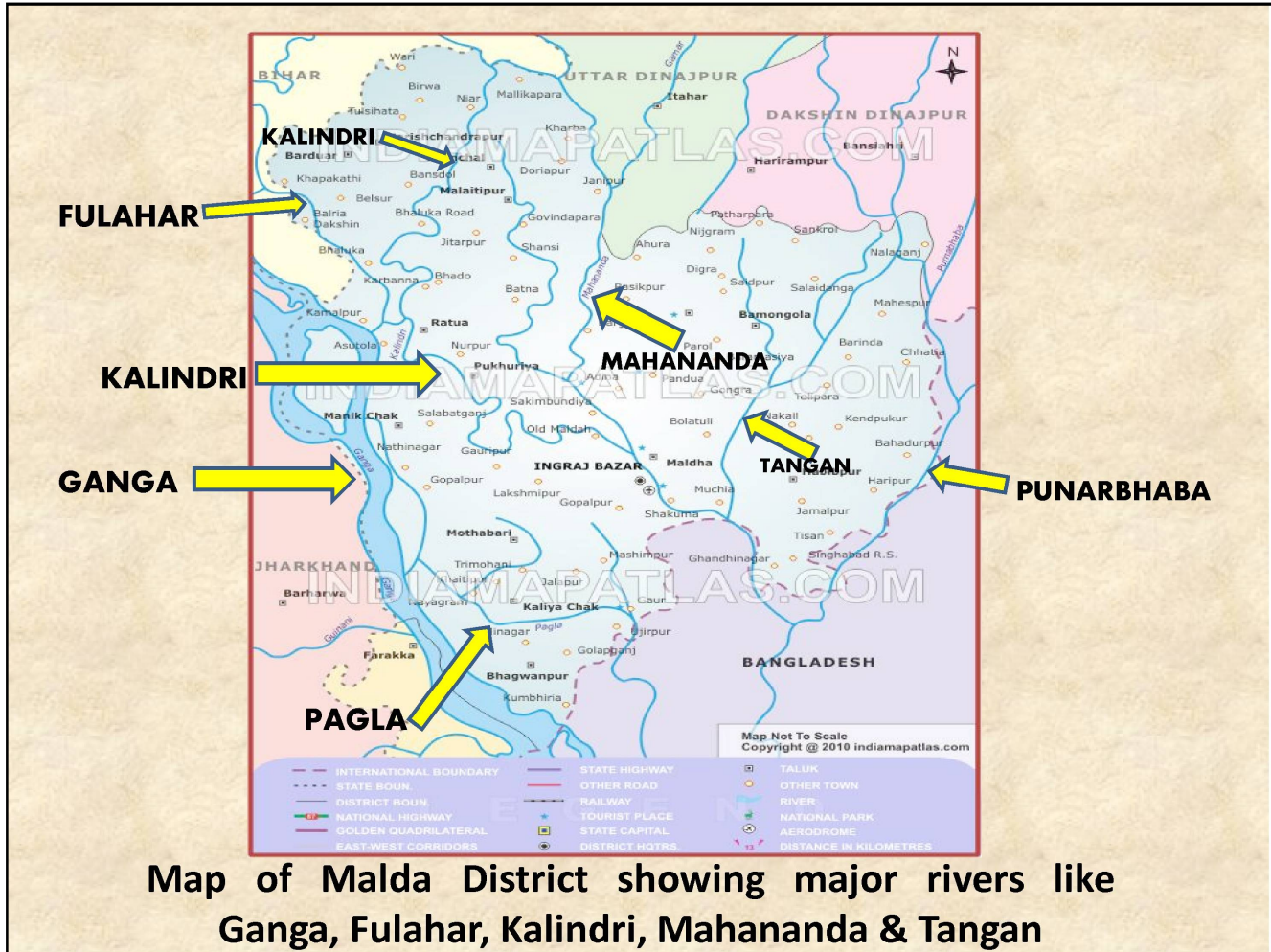


# **Flood Vulnerability Map**





## Map of Important Rivers



## **A BRIEF HISTORY OF FLOODS IN MALDA**

Floods of destructive character are of frequent occurrence in Malda. Between 1850 and 1870, there occurred three several inundations, which caused great distress in all parts of the district especially in the low lands along the rivers. After 1870, the years of high flood were 1875, 1885, 1906, Floods also affected the district in the years 1918, 1922, 1935 and 1948. In the recent past, severe inundation was experienced in the years 1987, 1988, 1991, 1995 and 1996.

These floods resulted not so much from rain in the District but due to overflow of water in the rivers caused by rainfall in the upper catchments areas. Most of the rivers and streams in Malda, the most important of which is the Ganges take their rise in the Himalayan mountains and are therefore, susceptible to sudden inflow of huge water caused by the melting of snow or by excessive rainfall in the mountains.

Successive heavy rainfall for three days in 1995 caused serious water logging and flash floods in Malda Town due to inadequate drainage system. In the years 1996, part of Malda district experienced a record 40 days continuous flood due to heavy rains in upper catchments areas of the river Ganges. The loss of lives and damages of properties caused by the flood was also considerable.

In the first phase, erosion of newly constructed 5<sup>th</sup> embankment started at Gopalpur in Manikchak Block on 04.07.1998. Huge river water flushed into country side affecting huge area of Gopalpur G.P. of Manikchak Block and K.B. Jhoubona G.P. of Kaliachak-II Block. In the 2<sup>nd</sup> phase, flood water spread into more Block areas between 30.07.1998 & 07.08.1998.

Fresh flood occurred in the third phase due to heavy rainfall in the district and upper catchment areas and flood water affected all the Blocks and the Municipalities. Rise of water level of different rivers namely Ganga, Fulohar and Mahananda caused unprecedented devastation in the district. This flood inundated almost the entire area of the district and caused dislocation of traffic and unanticipated damage of Govt. as well as private properties. This calamity has taken a lot of human and cattle lives. The depth of the flowing flood water varied from 4 feet to 10 feet in various parts of the district.

District administrative machinery along with the line departments of the District was engaged in relief and rescue works on war footing with the help of Army.

The National Highway, the State Highway and other roads of the district were sub-merged in many places resulting in disruption of communication.

Flood of 1999 inundated northern parts of the district. Some blocks in the southern parts of the district had also been severely affected. The National Highway, Gazole-Alal Road, Kotowali-Puhuria more and Manikchak-Ratua road were submerged and damaged in some places causing disruption of communication, particularly with the northern parts of the district. Due to disruption of road communication, relief materials had to be dispatched through Railway Services.

Many voluntary organisations like R.K. Mission, Bharat Sevashram Sangha, Kashi Biswanath Seba Samity, Red Cross Society, Lutheran World Service, Lions Club, Bharat Scouts & Guide, CARE, etc. rendered services in flood affected areas.

Flood situation in the year, 2003 was not so grim in comparison to that of 1999, but the menace of erosion played havoc. The advancement of the Ganges and Fulhar went apace for the past few years playing mockery with whatever attempts put to effect to check the onslaught of erosion. The spurs and embankments erected to curb the rate of erosion had been failed continuously. Placement of porcupines and boulder-pitching on river embankments to some extent could show a little in the face of great threat.

Flood occurred in the second phase due to heavy rainfall in the district and upper catchment areas. Rise in water level of different rivers, namely Ganga, Fulhar and Mahananda caused inundation of several areas of Malda district. Erosion and flood went hand in glove to wreck devastation in the district. Almost 236 Nos. of villages with nearly 1.64 lakh population were severely affected. Approximately 5043 hec. Of cropped area affected.

The administrative machinery along with different departments of the district rose to the occasion in relief and rescue work on war footing. Many voluntary organisations rendered commendable service in flood affected areas. Strict vigil was maintained to oversee the situation through liaison officers and Flood Co-ordination Committee meetings were held daily. Need based sub-allotments of relief materials, sinking of tube wells and deployment of medical teams at the affected areas were made. All out efforts were made to save electric power supply stations.

The district is fortunate enough to have a respite from the menace of flood and Erosion during 2005, 2006, 2007 & 2008 in a row. During 2006 heavy & incessant rainfall from 21.09.2006 to 25.09.2006 has created a flood like situation in almost all blocks under this district. During 2007 a vast part of Harishchandrapur-II & Ratua-I blocks were inundated due to sudden erosion of Bhaluka embankment at Harishchandrapur-II block. The threat of flood and erosion still hangs over the district this year also. With the forecasted arrival of monsoon, the countdown already has started this year also.

\*\*\*\*\*



## **Pictures of past Flood / Erosion**

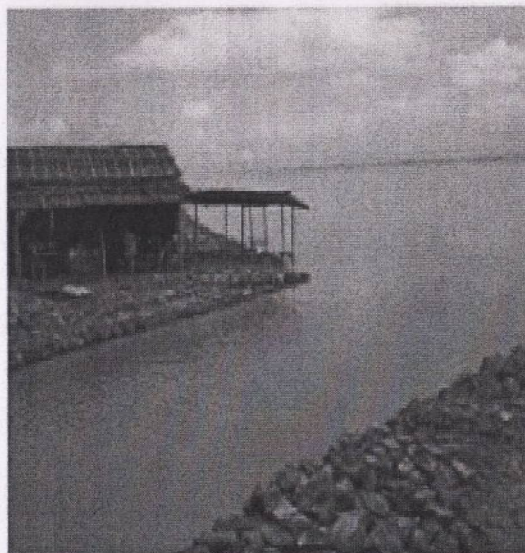
Malda



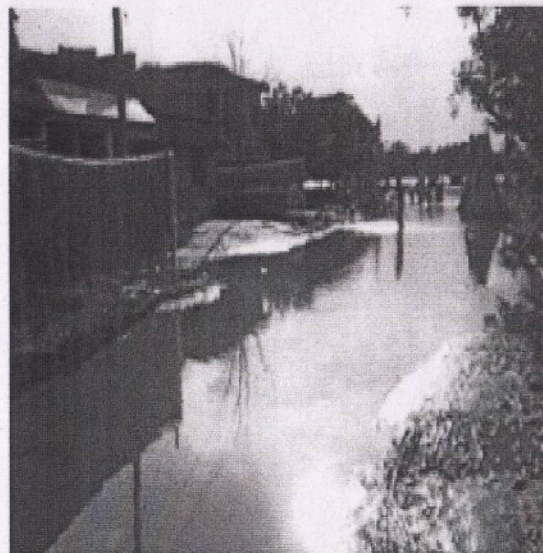
Bank erosion at Kalichak-III Block, July, 2003



Flooding near Ganga-Paglia River, September, 2011



Damage of boulder pitching bank near Manikchak, Sept-2011



Flooding at Ratua Town, Sept-2011

# **SOME IMPORTANT ASPECTS OF MALDA DISTRICT**

## **INTRODUCTION**

Malda District is the gateway to North Bengal. This District comprises with 2 Sub-Divisions, 15 Blocks and 2 Municipalities under the administrative control of Jalpaiguri Division.

## **GEOGRAPHICAL LOCATION**

This District is bounded on the North by North Dinajpur District (West Bengal) and the District of Purina (Bihar). On the East, it is partly bounded by the District of South Dinajpur (West Bengal) and the District of Rajsahi (Bangladesh), on the South by Murshidabad (West Bengal) and the District of Santhal Parganas (Jharkhand).

## **River system**

The rivers those traverse this district from north, north-west and north-east to the south are Ganga, Fulohar, Mahananda, Bhagirathi, Tangon, Kalindri, Punarbhaba and Pagla. The main river Ganga with its tributaries Fulohar, Bhagirathi and Kalindri enters this district at Gaduri of Bhutni Char of Manikchak block and flow over the block Manilchak, Kaliachak-II and Kaliachak-III. Flood frequently caused due to erosion and overflow of excessive rainfall of catchment areas.

River	Entry point	Runs through the blocks	Length in district	Tributaries	End point
Ganga	Gaduri of Bhutni Char of Manikchak	Manikchak, Kaliachak-II & Kaliachak-III	172 kms	Fulohar, Bhagirathi and Kalindri	Pardeonapur (Kaliachak-III)
Mahananda	Junction of Chanchal-I, Ratua-II & Gazole	Gazole, Habibpur, Oldmalda & Englishbazar	886 kms	Kalindri Pagla	Aiho (Habibpur)
Punarbhaba	North-eastern part of Bamangola	Bamangola	64.4 kms	Haria	Eastern boarder of Bamangola
Tangon	Junction of Bamangola & Gazole	Bamangola, Oldmalda, Habibpur & Gazole	64.6 kms	Chunakhali Khal	Mahananda
Kalindri	Mianghat (Harishchandrapur-II)	H.C pur-II, Englishbazar, Manikchak & Ratua-I	Not available	Fulohar	Mahananda at Bachamari (Old Malda)

## **CLIMATE**

The climate of the district is rather extremely very hot and sultry during Summer season, with rains and moisture in the air throughout the year. Basically, there are four seasons in the year. The cold season start about the middle of November and continues till the end of February. The period from March to May is the summer season. The rainy season starts in June with the coming of South-West monsoons and continues till the middle of September. October and the first half of November constitutes the post monsoons season. The normal rainfall is 1485 mm. The maximum precipitation occurs during the period from June to September. The maximum rainfall recorded during the year 2007 was 1713.6 mm.

## **TOPOGRAPHY**

This district consist mainly of low lying plains, sloping towards the south with undulating



areas on the north-east. The north-eastern part of the District contains a elevated tracts. the soil of Malda is alluvium in nature. and found both side of the river Mahananda which divides the district into two region flowing from north to south. The soil of eastern region is comparatively unfertile and commonly known as "Barind". The western region is divided into two parts by the river Kalindri. The northern low lying area, vulnerable to inundation in rainy season is known as "Tal" and the southern, the comparatively fertile and thickly populated part is called as "Diara". River Ganga flows along the south-western boundary of the district.

#### **INDO-BANGLADESH BORDER**

The total length of the Bangladesh boarder is 165.5 kms and bordering blocks are Bamangola, Habibpur, Old Malda, Englishbazar, Kaliachak-I and Kaliachak-III.

#### **ETHNICAL AND ANTHROPOLOGICAL CHARACTERISTICS**

The population of this district is mainly rural. A large no of families had settled from erstwhile East Pakistan has in bordering blocks namely, Bamongola, Habibpur, Malda, Kaliachak. The "Barind" areas are inhabited mostly by a huge Santhal Population most of them live on sericulture and silk product. The population of "Barind" areas are solly dependent on agriculture as such they are to remain in small hamlets.

The language of the majority of people is Bengali. But a certain percentage of the population in the West and North is of Behari origin and most of them speak in Hindi or Khotta ( which is a mixture of Hindi and Bengali). This class, though largely retained their own languages, are gradually acquiring Bengali. A considerable number of Maithili Brahmins who speak in Maithili are inhabitate in Araidanga, Milki, Noghoria, Atgama, Amirity and Mirjadpur area.

Among the scheduled castes population, there are 59 sub-communities of which Rajbanshi, Namasudra, Polia, Tiyer, Keet and Poundra are the main sub-castes. Among the tribal population there are 38 Sub-communities of which Santhal, Oraon, Mores, Mundas and Malpaharias are main sub-communities. About 88% of the tribal population are concentrated in the "Barind" areas comprised in four blocks namely, Gazole, Bamongola, Habibpur and Old Malda. Since the tribal population of this district is quite high, it goes without saying that the development of the tribals. Both scheduled tribes and scheduled castes people of this district are stil economically as well as educationally very much backward.

#### **THE ECONOMY**

The economy of the district is basically agrarian one and one of the most underdeveloped district West Bengal. The backwardness is characterised by low per capital income, low agricultural production, lack of industry, shortage of capital and entrepreneurship, lack of infrastructure and Labour surplus is another cause.

No mine found in this district. Inspite of irregular rain and unfertile land people has to depends on crops like paddy, jute, maize, wheat, pulses, oil seeds and sugarcane.

Malda occupies an important place in the state for production of raw-silk yarn. The annual estimated production of raw-silk yern in this district is about 85% of the total output of the State which. Mango is another important aspect of Malda's economy. About forth-five thousand acres of land are covered by mango orchards. This district has famous for its "Sundari" and "Malaberry" variety and due to huge production of mango the district is known as "Valley of Mango".

\*\*\*\*\*

District Profile : Malda District								
1.	Geographical Area	3733 Sq Kms (As per Census 2011)						
2.	Geographical Location	24 <sup>0</sup> 40'20"N to 25 <sup>0</sup> 32' 08"N						
		87 <sup>0</sup> 45'50"E to 88 <sup>0</sup> 28'10" E.						
3.	No. of Subdivisions	2						
4.	No. of Police Stations	11 ( Out Post – 13 )						
5.	No. of Municipalities	2						
6.	No. of Blocks/Panchayat Samitis	15						
7.	No. of Gram Panchayats	146						
8.	No. of Gram Sansads	2008						
9.	No. of Mouzas	1814						
10.	No. of Villages	3701						
11.	Population (Census 2011)	Male		Female			Total	
	RURAL	17,68,336		16,78,849			34,47,185	
	URBAN	283,205		258,455			541,660	
	Total Population of the District	20,51,541		19,37,304			39,88,845	
	Population as per Religion (2001 Census)	Hindu	Muslim	Sikh	Buddhist	Jain	Others & Christian	
		1621468	1636171	283	164	293	22350 & 8388	
	SC Population (2011 census)	8,35,430						
	ST Population (2011 census)	3,13,984						
	Total Main workers	10,50,995						
	Total Cultivators	219241						
	Total Agri Labourers	322452						
	Total Population in household industry	98383						
	Other workers	410919						
	Marginal Workers	486852						
	Non-workers	2450998						
12.	General Education (2012)							
	No. of Primary Schools:	1888						
	No. of Middle/Junior H. School	112 ( Including New Setup 105)						
	No. of Secondary Schools	137						

	<b>No. of Higher Secondary/Multipurpose Schools:</b>	<b>119</b>
	<b>No of Madrashah School:</b>	<b>12</b>
	<b>No of Junior Madrashah School:</b>	<b>19</b>
	<b>No of High Madrashah School:</b>	<b>38</b>
	<b>No of New Setup Madrashah School:</b>	<b>8</b>
	<b>No. of Colleges</b>	<b>8</b>
13.	<b>Professional &amp; Technical Education: (2012)</b>	
	<b>Engineering &amp; Technical School (Govt)</b>	<b>3</b>
	<b>No of Engineering Collage (Private)</b>	<b>1</b>
	<b>No of Vocational Training Centre (VTC) at different Schools:</b>	<b>145</b>
	<b>College: Teachers' Training (Govt)</b>	<b>1 (B.ED)</b>
		<b>1 (PTTI)</b>
	<b>No of Private B.ED</b>	<b>5</b>
	<b>No of Private D.ED</b>	<b>5</b>
	<b>No of Central School</b>	<b>1</b>
14.	<b>Special Education (2012)</b>	
	<b>Baisc Literacy Centre</b>	<b>25112</b>
	<b>Lok Siksha Kendra</b>	<b>146</b>
	<b>No of MSK</b>	<b>108</b>
	<b>No of Sishu Siksha Kendra(SSK)</b>	<b>618</b>
15.	<b>Libraries Reading Rooms and TLCs (2012)</b>	
	<b>Public Library</b>	<b>105</b>
	<b>Free Reading room</b>	<b>108</b>
	<b>TLC</b>	<b>56260</b>
16.	<b>HEALTH &amp;FW (2012)</b>	
	<b>Medical Collage</b>	<b>1</b>
	<b>District Hospital</b>	<b>1</b>
	<b>Sub Division Hospital</b>	<b>1</b>
	<b>Hospitals</b>	<b>11</b>
	<b>Health Centres</b>	<b>45</b>
	<b>Clinics</b>	<b>432</b>
	<b>Dispensaries</b>	<b>7</b>
	<b>BPHCs</b>	<b>10</b>
	<b>Rural Hospitals</b>	<b>5</b>
	<b>Primary Health Centres</b>	<b>35</b>
	<b>Sub Centres</b>	<b>511</b>
	<b>Total Beds</b>	<b>1259</b>
	<b>Family Welfare Centres</b>	<b>16 (15 Public; 1 Private)</b>
	<b>ICDS Projects</b>	<b>16 (15 Blocks , 1 Municipality)</b>

	<b>AWW Centres</b>	<b>5573</b>
17.	<b>No. of Cinema Houses (2012)</b>	<b>27</b>
18.	<b>AGRICULTURE &amp; Allied (2012)</b>	
	<b>Normal Rainfall</b>	<b>1485.2 mm.</b>
	<b>Total Area.</b>	<b>373300 Hec</b>
	<b>Forest</b>	<b>1680 Hec. { Reserve- 806; Protected-378; Vested Waste Land - 509.80}</b>
	<b>Cultivable Area:</b>	<b>2,80,000 Hec.</b>
	<b>Net Cultivable Area:</b>	<b>2,59,921 Hec.</b>
	<b>Orchard and Horticultural Crops:</b>	<b>75000 Hec.</b>
	<b>Pasture and other grazing Land:</b>	<b>435 Hec.</b>
	<b>Gross Cropped Area:</b>	<b>4,74,701 Hec.</b>
	<b>Cropping Intensity:</b>	<b>196</b>
	<b>Cultivable Waste Land:</b>	<b>671 Hec.</b>
	<b>Marginal Holding (below 1.0 acre)</b>	<b>310706; Area-171105 Hec. (05-06)</b>
	<b>Small Holding (1.0-2.0 acre)</b>	<b>49860; Area-81798 Hec. (05-06)</b>
	<b>Medium Holding (2.0-4.0acre)</b>	<b>15012; Area-40121 Hec.</b>
	<b>Medium Holding (4.0-10.0acre)</b>	<b>991; Area-4864 Hec.</b>
	<b>Large Holding (10.0 acres and above)</b>	<b>01; Area-10 Hec. (05-06)</b>
	<b>Vested Land Distributed (30-9-2002)</b>	<b>30332.00 Hec.; { SC-39310, ST-29168; Othrs.-82893}</b>
	<b>Area Irrigated</b>	<b>120067 { HDTW – 6150, MDTW – 242, LDTW – 641, STW – 78.494 , RLI – 8600, Others Sources – 24627, Tank – 1308, Net Irrigated Area – 1,44,588 Hec., Land Under Non Agricultural Use – 87,940 Hec.}</b>
	<b>Minor Irrigation</b>	<b>Tank – 254, HDTW – 326, MDTW – 18, LDTW – 108, STW – 33837, RLI – 384, ODW – NIL, Others - 445</b>
	<b>Fertilizer Consumed</b>	<b>Nitrogen- 21910 Tones; Phosphorus- 14380 Tones; Potassium- 13430 Tones.</b>
	<b>No. of Agri-Implement Hub</b>	<b>3 (Habibpur, Gazole, Chanchal-I)</b>
	<b>LIVESTOCK (2012)</b>	<b>3892930 ( All)</b>
	<b>Veterinary Hospitals etc</b>	<b>SAHC-4, BAHC-15, ABAHC-15, ADAC- 146, AI Centres-146 (Prani Bandhu) and 100 (Govt.)</b>
19.	<b>Cooperative And Banking (2012):</b>	
	<b>Central Banks</b>	<b>Societies- 1, Members- 690</b>
	<b>Primary Land Mortgage Banks</b>	<b>Societies- 1, Members- 6199</b>
	<b>Agricultural Societies</b>	<b>218, Members- 109252</b>
	<b>Non Agri Credit Societies</b>	<b>Societies- 308, Members - 13594</b>
	<b>All Credit Societies</b>	<b>Societies- 414, Members- 119086</b>
	<b>Non- Credit Societies</b>	<b>Societies- 112, Members- 3756</b>
	<b>Total No. of Credit and Non-Credit Societies</b>	<b>526, Members- 122846</b>
	<b>COMERCIAL BANKING</b>	<b>Rural- 134, Semi Urban- 19, Urban- 8, Total- 145{Ave. Population /Branch- 24600}</b>
20.	<b>INDUSTRY (2012)</b>	
	<b>Small Industry ( Regd. Cottage &amp; Small scale Industry)</b>	<b>2481, Employment- 14857 (after implementation of MSMED act 2006)</b>
21.	<b>POWER</b>	

	<b>Total no. of villages electrified</b>	<b>1773</b>
	<b>Consumption of Electricity ( in thousand KWH)</b>	<b>Domestic – 77560</b>
		<b>Commercial – 13454</b>
		<b>Industrial – 16199</b>
		<b>Public Lighting – 598</b>
		<b>Agri Irrigation &amp; Dewatering – 31627</b>
		<b>Public water works &amp; Sewarage Pump – 4187</b>
		<b>Total – 143625.</b>
22.	<b>No of Enterprises</b>	
	<b>Agri</b>	<b>Rural- 526 Urban – 15, Total – 541</b>
	<b>Non-Agri</b>	<b>Rural – 1881, Urban – 445, Total – 2326</b>
23.	<b>Regulated Market (2012)</b>	<b>Principal Market yard – 2, Sub Market yard – 17</b>
24.	<b>Market ( all categories)</b>	<b>136</b>
25.	<b>Regional Research Station on Subtropical Fruits by ICAR (proposed)</b>	<b>1</b>
26.	<b>Jute purchasing center under JCI (2012)</b>	<b>5</b>
27.	<b>Govt. Farms (all categories)</b>	<b>9</b>
28.	<b>Cold Storage</b>	<b>5 ( 4 Multipurpose)</b>
29.	<b>MR Shop (2012)</b>	<b>762</b>
	<b>TRANSPORT &amp; COMMUNICATION</b>	
30.	<b>Registered Motor Vehicles (as on 21/08/2012)</b>	<b>Heavy Goods vehicles – 3872</b>
		<b>Medium Goods Vehicle – 336</b>
		<b>Light Goods Vehicle – 2998</b>
		<b>Three Wheeler Goods Vehicle - 96</b>
		<b>Jeep Taxi – 756</b>
		<b>L.M.V (Car) – 6391</b>
		<b>L.M.V. (Van) – 86</b>
		<b>L.M.V.( JEEP/GYPSY) – 162</b>
		<b>Bus - 252</b>
		<b>Mini bus – 2</b>
		<b>Maxi Cab - 51</b>
		<b>OMNI Bus – 409</b>
		<b>Omni Bus ( Private) - 1285</b>
		<b>Tractor - 4646</b>
		<b>Trailers –1725</b>
		<b>Motor Cycle – 62970</b>
		<b>Scooter - 2112</b>
		<b>Ambulance - 116</b>
		<b>Three Wheeler (Passenger) – 715.</b>
	<b>PWD</b>	<b>Surfaced – 677.50 km Un surfaced – 5.00km. Total – 682.50 km.</b>

	<b>Zilla Parishad/Panchayet</b>	<b>Surfaced – 579.50 km, Un surfaced – 269.50 km., Total – 849.00 KM</b>
	<b>Municipalities</b>	<b>247.85 km., Un surfaced – 240.74 km</b>
		<b>Total- 488.59 km</b>
	<b>Railway Station</b>	<b>12 (Main Stations)</b>
31.	<b>POST and Telegraph (2012)</b>	
	<b>Post Office</b>	<b>37 (Departmental), 296 (Branch Office)</b>
32	<b>BSNL</b>	<b>Total 57 ( Under Malda SDCA – 29, Bulbulchandi SDCA- 8, Chanchal SDCA – 19, and Malda Main - 1)</b>

**COMPARATIVE FIGURES OF WATER LEVEL**  
(IN RESPECT OF PREVIOUS YEARS)

Name of Rivers	Gauge Point	Extreme danger level(Mts)	Highest danger level reached in the year(Mts.)					
			2010	2011	2012	2013	2014	2015
Ganga	Manikchak	25.30	24.68	25.64	25.25	25.95	24.65	24.47
Fulhar	Teljana	28.35	28.50	28.46	27.92	28.94	28.65	27.38
Mahananda	Englishbazar	23.50	20.12	21.65	20.20	21.05	19.87	20.96

**RAINFALL RECORD**

Month	Normal Rainfall (mm)	Rainfall of the years								
		2007	2008	2009	2010	2011	2012	2013	2014	2015
January	10.9	0	54.7	0.1	0	1.2	11.8	0	0	17.5
February	10.8	35.1	0.1	6.9	1.03	6.9	0	14.7	61.81	10.2
March	11	34.9	17.05	3.6	0	9.8	3.8	1.5	1.43	33.0
April	39.1	02.5	15.03	0	26.5	35.6	44	52	12.42	76.0
May	117.5	115	71	237.9	123.56	156.0	31.9	72.4	147.98	120.6
June	229.4	416.9	399.04	73.3	262.57	320.4	131	243.9	246.93	253.4
July	353.1	588.1	363.06	235	211.42	252.6	270.4	145.3	322.35	358.1
August	302.4	211.3	327.06	321.4	178.64	387.6	140.4	323.4	217.23	320.1
September	296.6	255.4	233.05	109.4	218.78	248.4	219.6	146.5	252.40	169.6
October	91.8	51.2	56.05	209.6	102.5	24.2	78.4	288.5	33.60	15.0
November	12.3	2.4	0	1.9	6.04	0	30.8	3.2	0	0.1
December	10.3	0	0	0	3.4	0	0	0	0	0.9
Total	1485.0	1713.6	1539.02	1199.1	1134.4	1442.7	962.2	1291.4	1296.11	1374.5

**STOCK POSITION OF RELIEF MATERIALS AS ON 27.05.2016**

Sl No	Name of materials	Stock of District Godown	Stock of Zonal Godown
1	Tarpaulin	19407 pcs	55306 pcs
2	Dhuti	4236 pcs	34383 pcs
3	Saree	2343 Pcs	56310 pcs
4	Lungi	5869 Pcs	36513 pcs
5	Children Garments	6349 pcs	12730 pcs
6	Salwar Kamiz	7022 set	31350 set
7	Pajama Panjabi	1679 set	19783 set
8	Male wrapper	4782 pcs	35343 pcs
9	Blanket	32 pcs	14143 pcs
10	Disaster Kits	2815 pkt	1500 pkt
11	Dignity Kits	Nil	5000 pcs

## AREAS VULNERABLE IN RESPECT OF FLOOD

SI No	Name of Blocks	Name of the G.P.	G.P wise vulnerable villages	Adjoining rivers
1.	H.C.Pur-II	Doulatnagar	Daulatnagar, Musulmanpara, Mihahat & Janakipur.	Mahananda & Fulahar
		Bhaluka	Hattichapa & Par Bhaluka.	
		Islampur	Islampur, Chandpur & Chandipur.	
2.	Ratua-I	Debipur	Debipur ,Terashia, Balupur & Durgapur.	Fulhar , Koshi & Kalindri
		Mahanandatola	Bankutola, Janjalitola, Bajitpur, Dharmatola, Badantola, Jagabandhutola, Sambalpur & Sudamtola.	
		Bilaimari	Ramayanpur,Ruhimari, Gangaramtola, Nakkati, Nayabilaimari,Dewanwala, Khasmahal & Ajitola.	
		Kahala	Kalutola, Asutola, Suryapur, Kamalpur, Kahala, Haragobindapur & Narattampur.	
		Baharal	Nimtalli, Sahapur Uttar, Sahapur Dakshin & Baharal.	
3.	Manikchak	Gopalpur	Kamaltipur,Sahabattola(part),Balutola, Nasutola(part), Kalitola, Iswartola(part) & Elahitola(part).	Ganga & Fulhar
		Dharampur	Wahedmara, Barabagan(part) & Sonapur.	
		Manikchak	Ramnagar,Jotpatta,Rabidaspara,Sibantola,2No.Bridge para,Darbari tola, Narayanpur, Narayanpur Id gaha para, Manikchak ghat Bandh Para, Jalalpur (part), New sonapur, Mankud, Domhat, Chamatola. Madantola & Palpara.	
		Dakshin Chandipur	Mahendratola,Raghunath tola,Bhabani tola,Bipin tola, Durgaram tola,Payari tola, Panchu tola,Ratan tola, Duyani char,Bhojan tola,Jaipaltola, Sukdev tola, Bhim tola, Nayan tola,Lutihara, Debu tola, Krishnatola, Bhabanathtola, Ganesh tola, Nabadiptola,Amintola & Pulintola bandh.	
		Hiranandapur	Gadai, Nanditola,Mathurtola,Bagdukra, Benutola colony, Kaluton tola,Rajkumar tola, Bagedantola, Piyaritola, Debutola, Anantalaltola,Giridharotola, Gourangatola ,Domontola, Lutihara, Baikunthatola & Chabiltola.	
		Nazirpur	Laksikol(part), Laskarpur(part), Haripur(part) & Jitmanpur(part).	
4.	Kaliachak-II	Bangitola	Jote kostuty, Mahadevpur, Bintola, Sadipur, Gosaihat & Chowdhutyola.	Ganga
		Uttar Panchanandapur-I	Dolboxtola, Ramlaltola(part), Loharditola, Sultantola, Laskaritola, Paglaghat Bus stand, Jinerditola & Nasarattola.	
		Uttar Panchanandapur-II	Dhelfora, Jitnagar & Jugaltola.	
		Hamidpur	Shibutola, Etwaritola, Shripur colony, Piaritola(east & west) Tofi, Mathabhanga, Jatintola, Chumkitola, Chechrutola, Khatiakhana char & 8 No.Spar bandh.	
		Rajnagar	Nayagram Model & Bromottar.	
5.	Kaliachak-III	Birnagar-I	Sanaharitola, Ananattola, Sarkartola & Chinabasar.	Ganga
		Birnagar-II	Dinutola.	
		Lakshmipur	Shimultola, Jiaratola, Moladtola & Bhangatola.	
		Kumbhira	Chaipara, Sukpara, Kumbhira, Hijinagar, Mohanpur & Jainpur.	
		Bakhrabad	Deonapur, Bakhrabad Char, Hatatpara, Sabdalpur, abirajtola & Sukdebpur.	
		Pardeonapur-Sovapur	Paranupnagar, Parlalpur, Paranantapur, Sovapur, Pardeonapur, Khoarpara & Bidyanathpur.	

\*\*\*\*\*



## **DISTRICT LEVEL FLOOD CONTINGENCY PLAN**

### **Pre-flood arrangements :-**

- Holding meetings of District, Block, Gram Panchayat and Gram Sansad level Disaster Management Committees and updating of contingency plan.
- Functioning of Control room in Collectorate as well as in the office of every G.P., Blocks, line departments specially police, Irrigation, Agriculture, Animal Resource, PHE and Heal Department.
- Joint inspection of vulnerable embankments with irrigation officials. Repair of sluice gates, flood protective embankments, breaches and rain cuts. Installation of heavy duty pumps for pumping out of stagnant water from Malda Town.
- Identification of vulnerable areas, vulnerable groups and people and mapping thereof. Repair and maintenance of flood shelters.
- Communication of river gauge readings of various rivers issued by flood forecasting cell, Malda and Central Water Commission, Patna to respective SDOs, BDOs and GPs.
- Dissemination of rainfall, weather and flood reports received from Government and IMD.
- Installation of temporary Police RT sets at different vulnerable points in addition to eight irrigation TR Sets.
- Arrangements for storage of adequate relief materials in every block relief go-down. Stock of Sub-Divisional Officer, Chanchal is also to be enriched.
- Rolling stock of Kerosene oil to be maintained at MR Dealer, Big dealer and Agent level. Rolling stock of rice at the rice millers' level and adequate stock in FCI Go-down.
- Formation of repaid response teams in all level from out of the DMT members and civil Defence volunteers. Formation of medical RRT at each BPHC level to cope with medical exigency.
- Boats, Seep boats and other accessories to be kept ready. Preparation of list of boat owners and make it available with BDO and Gram Panchayat.
- Keeping liaison with Army officials tagged with the district.
- Conduct of mock drill as many as possible.

### **Activities during flood :-**

- Control room will function round the clock. R.T. Set, Telephone and Fax will be done in working condition.
- People will be made alert with study of gravity of situation and evacuation will be taken up to the people of high risk zone.
- Boats and other conveyance will be deployed in strategic point.
- Shelter Management with drinking water facility and sanitation arrangement will be ensured.
- Necessary steps are being taken up for sinking and re-sinking of tube-wells and setting up of latrine is being ensured through Total Sanitation Programme in the identified flood shelter.
- Health system development scheme have been taken up for better health service to the vulnerable people. NGOs have been mobilised to this work also.
- Co-ordination meeting with deferent line department will be under taking to follow up Rescue, Relief and Rehabilitation Programme and to analysis the problem and action taking decision.
- Post disaster arrangement will be done providing financial assistance for rebuilding of damage houses, restoration of rural assets and alternative crop cultivation. Bank or other financial institution will be mobilised for this purpose.

\*\*\*\*\*

**3. (d) Important Telephone Numbers:**

Sl. No.	Name of Head Office	Telephone Numbers		Mobile Numbers
		Office	Residence	
1	Sabhadhipati, Malda Zila Parishad	253042	258725/255038	9733311888
2	District Magistrate, Malda	252381/267182	252415/253030	9775844844
3	Superintendent of Police, Malda	252520	255699	8373072200
4	Additional District Magistrate(G), Malda	252351	253051	8981885358
5	Additional District Magistrate(D), Malda	253049	253127	9832066956
6	Additional District Magistrate(DDM/LR)	252355		9434738110
7	Additional Executive Officer, Zila Parishad	252358	258725	9434205400
8	Sub-Divisional Officer, Sadar Malda	252733	2523608	9434055073
9	Sub-Divisional Officer, Chanchal	252872		9434308900
10	Secretary, Malda Zila Parishad	252328		9434738395
11	Chairman, English Bazar Municipality	252324		9434095102
12	Chairman, Old Malda Municipality	260235	260644	9434149857
13	District Relief Officer, Malda	252058		9874949330
14	Additional Superintendent of Police, Malda	252661		8697731567
15	Deputy Superintendent of Police(HQ), Malda	254148		
16	Executive Engineer, I&W, Malda			9434303928
17	Executive Engineer, MED, Malda			9434242474
18	CMOH, Malda	254611	252280	
19	DVO, Malda	252407		
20	Deputy Director, Animal Husbandry	252147		9331275525
21	Secretary Red Cross Society, Malda	250293		
22	Principal Agriculture Officer, Malda			9474619061
23	Deputy Director, Sericulture, Malda	252291	252474	
24	Executive Engineer, PHE, Malda	220250		
25	Sub-Divisional Controller, F&S, Malda	220442		
26	District Controller, F&S, Malda	252591		9475676140
27	Area Manager, FCI, Malda	252344		9002694780
28	Divisional Officer, Fire Brigade, English Bazar	278854		9830841642
29	Fire Station, English Bazar	278854		
30	Fire Station at Harishchandrapur-I Dev.Block	03513-244121		9593439087
31	O.C., Fire Station, Chanchal	03513-252111		9832685593
32	O.C., Civil Defence, Malda	252017		9434245961 9474080834

33	MD, Indian Oil Corporation	260508 260449 260542		9434060449
34	General Manager, Farakka Barrage	03485-253644 253335 253332 253294		
35	Deputy General Manager / AGM(TS), NTPC Farakka	03485-251811 226020		9434096181 9434752877 9415342209
36	WBSEDCL(N)	03513-251266		
37	WBSEDCL(S)	03512-253591 03512-253437		
38	The Chief Executive Officer (Confed)	033-22377012		9062923568

### Contact No. of Non Governmental Organizasions:

Sl. No.	Name of Non Governmental Organizasions	Telephone Numbers		Mobile Numbers
		Office	Residence	
1	IMA	252132		
2	Red Cross	25093		9800007403
3	St. John Ambulance	252751		
4	Bharat Sevashram	260459		
5	Ram Krishna Mission	252479		
6	Lions Club	252398		
7	Malda Club	253276		
8	Malda Chamber of Commerce	266028		
9	Sanskriti O Samaj Unnayan Parishad	03512-267423		9434012392

### Contacts Number of Block Development Officers:

Sl. No.	Name of Block	Office Telephone No.	BDOs' Contact No.
1	Harishchandrapur - 1	03513-255228	9564445422 9434738491
2	Harishchandrapur - 2	03513-255249	9775273180 9434738492
3	Chanchal - 1	03513-252223	9434738494
4	Chanchal - 2	03513-265660	9434738496
5	Ratua - 1	03513-266229	9434738489
6	Ratua - 2	03513-282250 03512-286277	9434308919 9433217933 8768903769
7	Gazole	03512-235330	9434738456
8	Bamangola	03511-266339	9163634402 9434738458
9	Habibpur	03511-252214	7384189944
10	Old Malda	03512-260239	9434738459
11	English Bazar	03512-252297 03512-220672	9475093244 9836556585
12	Manikchak	03512-272326	9735002085
13	Kaliachak - 1	03512-244285	9434738341
14	Kaliachak - 2	03512-248626	9434738482
15	Kaliachak - 3	03512-222526	9002203538



## Important Police Officials

SL NO	DESIGNATION	LAND PHONE/FAX	MOBILE
1	SP Malda	03512-252520	9836127277
2	Addl SP Malda	03512-252661	8697731567
3	Dy SP(Hq), Malda	03512-252148	9434001088
4	Dy SP(D&T), Malda	03512-252148	9800118074
5	Dy SP DIB, Malda	03512-252385	9434166259
6	SDPO Chanchal	03513-251092	9775802304
7	Dy SP CID, Malda		8145701035
8	DIO-I, Malda	03512-252349	9836075556
9	RI, Malda	03512-252951	9832060559
10	CI Gazole	03512-235338	9733237709
11	CI Ratua	03513-266090	9832246013
12	Court Inspr. Malda		9733440485
13	Inspr. A/H		9434166715
14	DIO-II, Malda	03512-252349	7797602039
15	IC Englishbazar PS	03512-252071	9733329080
16	IC Kaliachak PS	03512-244310	9434235028
17	IC Malda PS	03512-260222	9733008144
18	IC Habibpur PS	03511-252664	9474434803
19	IC EB Woman PS	03512-220398	9434633830
20	IC Baishnabnagar PS	03512-204282	9735010329
21	IC Chanchal PS	03513-252256	9734355393
22	IC Harishchandrapur PS	03513-255215	7797996906
23	OC DCRB, Malda	03512-221025	9735900690
24	RO (I)		8145879474
25	OC Manikchak PS	03512-272333	9734911268
26	OC Gazole PS	03512-235327	9733419947
27	OC Bamongola PS	03511-265555	9735092102
28	OC Ratua PS	03513-266222	9733131477
29	OC Pukhuria PS	03512-286211	9836478444
30	OC Bhutni PS		8145879062
31	OC Watch	03512-252349	9775401987

**Helipads/High Grounds:**

Block	Sl. No.	Ground	Lat	Long
Harishchandrapur -I	1	Harishchandrapur High School Ground.	25.4164417	87.8776409
	2	Tulsihata High School	25.0108312	88.1411123
	3	Kushida High School	25.5271221	87.9457112
Harishchandrapur -II	1	Bhaluka Irrigation Bunglow Ground.	25.2840129	87.8851056
	2	Teljana Irrigation Bunglow Premises.	25.3710357	87.8380134
	3	Doulat Nagar School Ground.	25.4211922	87.8294726
Manikchak	1	Manikchak Sikshaniketan	25.0679753	87.9032943
	2	Najirpur Football Ground.	25.1287689	87.9071015
Ratua-I	1	Samsi College Ground	25.2772843	88.0114901
	2	Ratua Football Ground	25.2004887	87.9259168
Ratua-II	1	Pukuria High School.	25.1466843	88.0167926
Kaliachak-III	1	South Malda College (Lakshmipur GP)	25.0402023	88.0281012
	2	Baishnabnagar High School Field.	25.2477523	88.296212

### **DETAILS OF FERRY GHATS UNDER MALDA DISTRICT AS ON 18.05.2016**

SI No	Name of Block	Name of ghat with location	Name of River	Name of lessee	Cont. No	Name of Divers/swimmers	Cont.No.
01	English bazar	Lakshighat at Narhatta G.P.				1.Chiranjit Karmakar 2.Mir Amir Ali 3.Bankim Swarnakar 4.Sibu Saha 5.Chiranjit Mandal 6.Sumit Karmakar 7.Prasenjit Gupta 8.Rajat Saha 9.Sagar Halder 10.Kundan Ram 11.Shreebas Das 12.Mamon Hossain 13.Suman Hossain 14.Najibul Anwar 15.Md. Imran 16.Subrata Roy	8759054002 9614964980 9614891120 9563019941 9614368246 8759163979 9593866063  9932603342 9831105108 8759538135 9614272721 8436191478 9002545662 9614980084 9800317200
02.	Ratua-I	1.Nakkatti Ghat/Debipur G.P.  2.Shibpur Ghat/Kahala G.P.  3.Sambut Ghat/Mahananda tola G.p.	Fulahar	Abdul Bari  Satish Mandal Basukinath Yadav	9733159605  9733107357 9733208522	1.Chinmoy Mandal 2.Anil Ghosh 3.Lakhshan Mandal 4. Golap Mandal 5. Atul Ghosh 6. Sadhin Ghosh  1.Ranjan Maldal 2. Matilal Saha 3. Tipu Mandal 4. Tapan Basak  1.Lakshan Jadav 2. Panchu Jadav 3. Sankar Jadav 4. Durga Jadav 5. Daya Jadav 6. Bibhu Jadav	8145776013 8768858968 9734956047 8348706059 9735425362 7404457032  ----- ----- ----- -----  9647365087 9932097299 8348973028 9851121824 9593009947 8768455280
03.	Kaliachak-I	1.Nashpara Ghat/Jaluabadhal G.P.  2.Khirki Kadamtala Ghat	Bhagirathi	Zakir Sk.  Gokul Ghosh		1.Mostafijur Rahaman 2.Nabab Sk 3.Mahabub Sk  1.Mithun Mandal 2.Biswanath Mandal 3.Saroj Ghosh 4.Sushil Mandal 5.Bikash Mandal	8016275300  8116264303 7319221107   9932294562



						2. Hudaib Sk 3. Kalam Sk 4. Pintu Mandal 5. Firoz Sk.	9933643546
04.	Bamangola	1. Daulatpur Ghat/Madnabati G.P. 2. Kadubari(Rangamatia)Ghat 3. Shibdangi Ghat  4. Chhotopatheri Ghat/Chandpur G.P. 5. Dakatpukur Ghat/Bamangola G.P. 6. Machhuakandar Ghat/Jagdala G.P.				1. Esahak Ali 2. Irfan Ali 3. Emrul Kais 1. Shibnath Mandal 2. Gautam Sarkar 1. Matiur Rahaman 2. Tabjul Mian 3. Imran 1. Jayanta Mardi 2. Mansu Hembram  1. Baidyanath Roy 2. Kamal Roy 3. Sharat Sarkar 1. Uttam Mandal 2. Ashok Sarkar 3. Sankar Mandal	9734935133 7550808404 9734961675 9851779351 9851603592 9733332390  7872521200  9563820314 8759109292 9614636959 8967357710 9733232927
05.	Kaliachak-II	1. Tofi Spurs Ghat/Hamidpur G.P. 2. Khatiakhana Char Spurs Ghat 3. Pagla Ghat / Uttar Panchanandapur-II G.P. NB: All Ferry Ghats are maintained by Jharkhand Govt.					
06.	Kaliachak-III	1. Nimitita Ghat/Sovapur 2. Dhuliyon Ghat/parlarpur 3. Dhulian Deonapur Phultala Parshibpur Ghat & Khutigari (Settled by L&LR Dept. Malda)  4. Arjunpur-Kulidiara – Brahmangram Ghat & Khutigari (Settled by L&LR Dept. L&LR)		1. Ajat Gha 2. Hasu Saikh 3. Jalal Saikh 4. Raju 5. Ram Ghuti 6. Abeg Ali 7. Anarul Islam 8. Evenath Saikh 9. Ashu 10. Eusuf Saikh 11. Josrah 12. Rajen 13. Dhiren Choudhury 14. Tofi 15. Abu Kalam Sarbari Prasad Das	9593481260 9732794672 9732189924 9735591663 7602816097 7872088542 9775689349  9732656961  9732044715 9775067216  8145395955 9735409157 7076057209  7407320046 9732430218  9734061538	1. Farman Ali 2. Soleman Ali 3. Ismile Ali 4. Sanjay Mandal 5. Vivekananda Das 6. Rina Bibl 7. Sadhana Das 8. Mamani Mandal	9733342306 9733333170 9609704806 7797174834 9733338501 Not found 9609704806 8768173682

				Enterprise Ashraful Hoque	9773341307		
07.	Gazole	Nil	NA	NA	NA	NA	NA
08.	Manikchak	1.Rajmahal- Manikchak Ghat & Khutigari ( Settled by L & LR Dept.Malda)  2. Manikchak ghat,Manikchak G.P 3. Sankartola ghat, Mathurapur G.P 4. Kalitola ghat, Nazirpur G.P		1.M/S Rajkishore Singh & Ors. 2.Suti Thana Co-operative Transport Society Ltd	9199713715		
09.	Habibpur	Nil	NA	NA	NA	NA	NA
10.	Ratua-II	<b><u>A)Sripur-II G.P.</u></b> 1.Raninagar Babhundanga Ghat. 2.Chator Darapara Ghat. 3.Chator Banitola Ghat. 4.Raninagar Shoshan Ghat. 5.Raninagar Ghat. 6.Patua Ghat. <b><u>B)Sripur-I G.P.</u></b> 7.Harirampur Ghat. 8.Nazarpur ghat. 9.Tekna Ghat. 10.Gobindapur Ghat. 11.Askapara Ghat. <b><u>C)Sambalpur G.P.</u></b> 12.Haripur Ghat. 13.Balughat Ghat. 14. Kamdol Ghat. <b><u>D) Maharajpur G.P.</u></b> 15.Allahabad Ghat. 16.Rajapur Gujar Ghat. 17.Kasahadara Ghat. 18. Mahananda		Md. Neju	9679321101		

		19.Sultanganj Ghat. <b>E) Paranj G.P.</b> 20.Bazaqr Ghat 21.Chandpur Jelepara Ghat. 22. Paranj Ghat. <b>F) Araidanga G.P.</b> 23.Pirpur Ghat. 24.Chharamari Ghat. 25.Gouripur Ghat. <b>G) Pirganj G.P.</b> 26.Kutubganj Ghat. 27.Pirganj Ghat. 28.Satmara Ghat. 29.Borkal Ghat. <b>H) Pukhuria G.P.</b> 30.Nashipur Ghat. 31.Ghasinagar Ghat. 32.Koklamari Ghat.					
				Sayed Rabiul	8101498461		
				Sk Munser	9609773010		
11.	H.C.Pur-I	Nil	NA	NA	NA	NA	NA
12.	Chanchal-I	Nil	NA	NA	NA	NA	NA
13.	Chanchal-II	1.Chandrapara ghat. 2.Goalpara Ghat.					
14.	Old Malda	1.Borkol Ghat/Mahishbathani G.P. 2.Balarampur Ghat./Mahishbathani G/.P.	Mahananda				
15.	Harishchandrapur-II	1. Gobra Ghat /Daulatnagar G.P. 2. Par Valuka Ghat /Valuka G.P. 3. Bhuna Sadlichak Ghat/ Sadlichak G.p.  4.Lakhia Ghat /Daulatnagar G.P.	Fulahar   Jhumi				

GOVERNMENT OF WEST BENGAL  
Office of the District Magistrate & District Collector, Malda  
District Disaster Management Section

Notice No 138/DDM

Telefax : 03512-252058, e-mail ID : ddmaldacell@gmail.com

dt. 05.04.2016

NOTICE

An urgent meeting under the chairmanship of the District Magistrate will be held on 19.04.2016 at 12.00 noon in the Conference Hall of Malda Collectorate to review the status of preparedness for managing and mitigating the disaster impact of the natural calamities during the ensuing pre-monsoon cyclone and monsoon season. Block Development Officers, Executive Officers of Municipalities and all line departments are requested to attend in the meeting accompanied with Disaster Management Plan 2016-2017 positively which should be made on the basis of the National Disaster Management authorities guide lines. NDMA's website: ndma.gov.in.

All concerned are requested to make it convenient to attend the said meeting.

AGENDA :

- 1) Preventive measures to be taken in connection with Cyclone, Hail Storm, River Erosion and Flood in Malda District.
- 2) Arrangement of Early warning Message.
- 3) Miscellaneous

Memo No 138/1(75)/DDM

Copy to :-

1. The Additional District Magistrate (Gen), Malda.
2. The Additional District Magistrate (DDM), Malda.
3. The Additional District Magistrate (Dev), Malda.
4. The Additional Executive Officer, Malda Zillaparisad, Malda.
- 5-6. The Sub-Divisional officer Sadar/ Chanchal, Malda.
7. The Superintendent of Police, Malda.
8. The Chief Medical Officer of Health, Malda.
9. The Executive Engineer Irrigation Division, Malda.
10. The Executive Engineer Mahananda Embankment Division, Malda.
11. The Superintending Engineer PHE, Malda.
12. The Executive Engineer P.W.D Roads, Malda.
13. The Executive Engineer High Way Division -vii, Malda.
14. The Executive Engineer Agri-Mech, Malda-I Division, Malda
15. The Executive Engineer Agri-Mech, Malda-II Division, Malda
16. The Executive Engineer Water Resource Development, Malda.
17. The Divisional Manager WBSEDCL (North), Malda.
18. The Divisional Manager WBSEDCL (South), Malda.
19. The Deputy Director of Agriculture ( Admn.), Malda.
20. The Deputy Director, Fisheries, Malda.
21. The Deputy Director, Sericulture, Malda.
22. The Deputy Director, Horticulture, Malda.
23. The Deputy Director, ARD & Parisad Officer, Malda.
24. The Manager, BSNL, Malda.
25. The Officer-in-Charge Fire & Emergency Services, Malda.
26. The District Controller F&S, Malda.
27. The District Inspector of Schools(Secondary), Malda.
28. The District Inspector of Schools (Primary Education), Malda.
29. The Regional Transport Officer, Malda.
30. The Officer-in Charge, Civil Defence, Malda.
- 31-46. The Block Development Officers (all), Malda.
- 47-48. The Executive Officer, English Bazar /Old Malda Municipality, Malda.
- 49-58. The Secretary/ President, N.G.O.
- 59-60. The Sub-Divisional Disaster Management officer Sadar/ Chanchal, malda.
- 61-75. The BDMO/ BDMO in charge of all Blocks, Malda.,

Memo No 138/1(75)/1(4)/DDM

Copy forwarded for information and taking necessary action to:

1. The N.D.C., Malda, is requested to spare the conference Hall for that date and time and arrange refreshments for the participants.
2. The C.A. to the District Magistrate, Malda.
3. The C.A. to the Additional District (DDM), Malda.
4. Office file.

# ATTENDANCE SHEET

Sub: Meeting to review the status of preparedness for managing and mitigating of disaster impact of the natural calamities during the ensuing pre-monsoon cyclone and monsoon 2016.

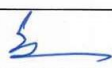

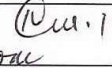

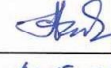
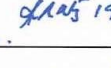
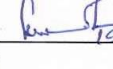

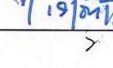
Date : 19.04.2016, Time : 12.00 noon

Venue : Conference Hall, 3<sup>rd</sup> floor, Collectorate Building.

Sl No	Name of Officials	Designation	Contact No	Mail ID No	Signature
01	Sri Sharad K. Dwivedi IAS	D.M			<i>[Signature]</i> 19/04/16
02	Md. Syed Waqar Raza IPS	S.P			<i>[Signature]</i> 19.4.16
03	Sri Debatosh Mandal WBCS(Exe)	ADM(G)			<i>[Signature]</i> Debatosh Mandal
04	Sri Padam Sunam WBCS(Exe)	ADM(Dev)			
05	Sri Malay Mukhopadhyay WBCS(Exe)	ADM(ZP)			<i>[Signature]</i> 19/4/16
06	Sri Kanchan Choudhury WBCS(Exe)	ADM(L&LR)			<i>[Signature]</i> 19/4/16
07	Sri Sandeep Nag WBCS(Exe)	SDO, Sadar			<i>[Signature]</i>
08	Sri Puspak Ray WBCS (Exe)	<i>SDO, Chanchal</i>			<i>[Signature]</i> 19.4.16
09	<i>Dr. Dilip Kr. Mandal</i>	<i>CMO, Malda</i>			<i>[Signature]</i>
10	<i>B.M.R. REDDY</i>	<i>D.D.A (Admin)</i>			<i>[Signature]</i> 19.4.16
11	<i>Munish Kumar</i> <i>Kurda</i>	<i>S.D.D.M.O</i> <i>Chanchal</i>	<i>78725770</i> <i>29</i>		<i>[Signature]</i> 19.04.16
12	<i>Anil Kr. Sinha</i>	<i>S.D.M.O</i> <i>Chanchal</i>	<i>9733364660</i>		<i>[Signature]</i> 19/4/16
13	<i>Dr D. Sarkar</i>	<i>Secy.</i> <i>Dist. Comm. Secy.</i>	<i>9800007403</i>		<i>[Signature]</i>
14	<i>D. Bag.</i>	<i>EE, Malda</i> <i>Highway Div.</i>	<i>9434173173</i>		<i>[Signature]</i>
15	<i>Kalyan Kr. Chakraborty</i>	<i>Sr. SOI CD</i>	<i>9474080834</i>		<i>[Signature]</i>
16	<i>Tanik Kr. Ghosh</i>	<i>Sr. SOI CD</i>	<i>8900283723</i>		<i>[Signature]</i>
17	<i>Dr. (Mrs.) Rehana</i>	<i>Secy. - D. Comm.</i>	<i>7872805443</i>		<i>[Signature]</i>
18	<i>G. I. B. B.</i>	<i>DPO</i>	<i>9434125033</i>		<i>[Signature]</i>
19	<i>Krishna Rupa Raptan</i>	<i>SSMO</i>	<i>9874949330</i>		<i>[Signature]</i>
20					
21					
22					
23					
24					
25					



Sl No	Name of Block v. Officers	Name of Block	Contact No	Mail ID No	Signature
26	B. Chakraborty	Gazole	9434738456	gazol.bdo@gmail.com	19/4/16
27		Bamangola			
28		Habibpur			
29	Suvendu Mandal	Old Malda	9434738459	oldmalda1@gmail.com	19.04.16
30	Subhasis Poddar BDMO	Englishbazar	9475093244	bdo.cb.mld@gmail.com	19.4.16
31	Utpal Mukherjee	Manikchak	9735002085	bdo.manikchak@gmail.com	19.4.16
32	KUNTAL BOSE	Kaliachak-I	9434738341	bdo.kaliachak1@gmail.com	19/04/16
33	Arjit Mukherjee	Kaliachak-II	9434738482	bdo.kaliachak2@gmail.com	19/4/16
34		Kaliachak-III			
35	S. K. Bhowman	Chanchal-I	9434738444	bdo.chanchal1@gmail.com	
36	ANUP CHAKRABORTY B.D.O in-charge	Chanchal-II	9674752945	bdo.chanchal2@gmail.com	19.4.16
37	Biplab Kr. Roy	Harishchandrapur-I	9564445422	bdo.harishchandrapur1@gmail.com	19/4/16
38	Krishna Chandra Das	Harishchandrapur-II	9434738492	harishchandrapur2@gmail.com	19.4.16
39	Pranab Chakraborty	Ratua-I	9434738489	bdo.ratua1@gmail.com	19/04/16
40	Mohan Maji	Ratua-II	9433279533	ratua2block@gmail.com	19/4/16
41		Amiya Adch	8972236320		19/4/16
42	Shibaji Sankar	E.B. Municipality	94341-86130		19.4.16
43	ASOK KUMAR DAS	English Bazar Municipality	9433794329	englishbazar.municipality@gmail.com	19.4.16
44	Ashok Chakraborty	E.B. Municipality	9434206650		19.4.16
45	Soumendra Nath Mandal	Gazole Dev. Block BDMO-IN-charge	9732080793	gazole.bdo@gmail.com	19.4.16
46	Chandam Karmakar	EE (AM), MID-I	9733445597	ee.am.malda2@gmail.com	19/4/16
47	Amit Baidya	AE (A-M), MALD-I (AM) S/DIVN.	9433351028	aemalda1@gmail.com	19.04.2016
48	Sujoy Dasgupta	Ramakrishna math malda	252479		19/04/2016
49	Akim Kundu RC	E.B.	7501634696		19.04.16
50	Pratim Roy	old malda	8145123408		Pratim Roy
51	UZZAL SAHA, Hony. General Secretary	Malda Merchants Chamber of Commerce	9434206618		Uzzal Saha 12.4.16

Sl No	Name of Officials	Designation	Contact No	Mail ID No	Signature
52	Somir Nanda Red Cross Society	Staff	980000187		
53	Sanjay Mandal	Red cross Voluntary	9614461729	redcrossmalda@gmail.com	
54	Narayan Senkar	Food & Supplies Malda.	9733170476		 19/04/16
55	NIRAJAN MITRA	Exe. officer	9433114436	hd malda municipality@gmail.com	 Cum. 19/4/16
56	Nanaj Kumar Baidya	Deputy Director of Fisheries (Sericulture)	943473094	maberi2@gmail.com	 19/4/16
57	Hiranmoy Mandal	AI of Schools DVs (PE), Malda	9775903763	dispe@gmail.com	 19.4.16
58	Dr. Bananwar Chakrabarty	DDARDd Po. Malda.	9331275525	ddmalda2007@gmail.com	 19/4/16
59	Abhis Choudhary	DISSE Malda	9474633613	disse malda@gmail.com	 19/4/16
60	Sumit Biswas	EE/MED I & W	9433319067	eemed25@gmail.com	 19/4/16
61	Anurash Kumar Singh	EE/MED	9434303928	malda irrigation @gmail.com	 19/4/16
62					
63					
64					
65					
66					
67					
68					
69					
70					
71					
72					
73					
74					
75					



## Disasters: Do's and Don'ts

### # Flood

# FLOOD	
Do's	Don'ts
• Tune to your local radio for warnings and advice.	• Do not allow children to play in, or near flood waters.
• Move to higher ground.	• Do not wander around in a flooded area.
• Move vehicles, equipments, chemicals, old persons, children, pregnant women, etc., to higher and safer places.	• Do not drive into water of unknown depth and current.
• Disconnect all electrical appliances.	• Do not eat food, which is affected by Flood waters.
• Turn off electricity and gas before you leave the house.	• Do not try to walk or drive through Flood waters.
• Tie your valuable items or articles and keep them in a safe and high place or bury it underground. Shift the livestock and cattle to safe places or high land. Keep some feed and fodder for them.	• Do not walk across bridges as they may collapse.
• Insure household articles, livestock and crop.	• Do not contact floodwaters to avoid contamination.
• Collect your survival kit or basic essentials before leaving your house.	• Do not walk through flowing water - currents can be deceptive, and shallow, fast moving water can knock you off your feet.
• Think of safety first during a flood.	• Do not swim through fast flowing water or you may get swept away or struck by an object in the water.
• Take care when walking through shallow waters.	• Do not drive through a flooded area as you may not be able to see abrupt drop-offs, and only half a metre of flood water can carry a car away.
• Avoid contact with flood waters as it may be contaminated with sewage, oil, chemicals or other substances.	• Do not return to your dwelling until an "All Clear" assurance has been given.
• If you have to walk in stagnant waters, use a pole or stick to ensure that you do not step into deep water, open manholes or ditches.	• Do not reconnect your power supply until a qualified engineer has checked it.
• Stay away from power lines - electrical current can travel through water. Report power lines that are down to the power company.	• Do not smoke or use candles, lanterns, or open flames indiscriminately.
• Look before you step - after a flood, the ground and floors are covered with debris, which may include broken bottles, sharp objects, nails, etc. Floors and stairs covered with mud and debris can be slippery.	• Do not dry buildings with mechanical dehumidifiers, which may draw out moisture too quickly and cause additional damage.
• Help in drying out of buildings by carefully removing mud, standing water, and water-logged	• Do not scrub or brush mud and other deposits from materials. This may cause further damage.



furnishings and debris.	
<ul style="list-style-type: none"> <li>Remove residual moisture gradually by allowing structures to dry naturally and by opening doors and windows.</li> </ul>	<ul style="list-style-type: none"> <li>Do not let water-damaged papers remain in wet boxes.</li> </ul>
<ul style="list-style-type: none"> <li>Document the damage for insurance purposes by taking notes or photographs.</li> </ul>	<ul style="list-style-type: none"> <li>Do not keep objects in dark, hot, stagnant air with high humidity—these conditions encourage mold.</li> </ul>
<ul style="list-style-type: none"> <li>Before removing items from water, prepare a clean, dry, well-ventilated temporary area for sorting and storing your objects. Wet objects should be moved only once because they are fragile, so setting aside such an area is vital.</li> </ul>	<ul style="list-style-type: none"> <li>Do not try to separate bundles of saturated paper.</li> </ul>
<ul style="list-style-type: none"> <li>Wear rubber gloves, and, if possible, a face mask, when handling items.</li> </ul>	
<ul style="list-style-type: none"> <li>Provide support for damaged objects when moving them, such as a cart, or a flat, sturdy surface.</li> </ul>	
<ul style="list-style-type: none"> <li>Seek the advice from an expert, if in doubt, about how to salvage any materials.</li> </ul>	
<b># Cyclone</b>	
<b>Do's</b>	<b>Don'ts</b>
<ul style="list-style-type: none"> <li>Check the house; secure loose tiles, carry out repair works for doors and windows.</li> </ul>	<ul style="list-style-type: none"> <li>Do not ignore warnings and go for sight-seeing near the sea.</li> </ul>
<ul style="list-style-type: none"> <li>Remove dead wood or dying trees that are lying close to the house; anchor removable objects like lumber piles, loose tin sheds, loose bricks, garbage cans, sign-boards, etc., which can fly in strong winds.</li> </ul>	<ul style="list-style-type: none"> <li>Do not allow children to play in, or near accumulated waters.</li> </ul>
<ul style="list-style-type: none"> <li>Keep some wooden boards ready so that glass windows can be boarded, if needed. Keep a hurricane lantern filled with kerosene, battery operated torches and enough dry cells or emergency lights in working condition.</li> </ul>	
<ul style="list-style-type: none"> <li>Demolish condemned buildings.</li> </ul>	<ul style="list-style-type: none"> <li>Do not drive into water of unknown depth and current.</li> </ul>
<ul style="list-style-type: none"> <li>Keep some extra batteries for transistors.</li> </ul>	<ul style="list-style-type: none"> <li>Do not eat food, which is affected by accumulated water.</li> </ul>
<ul style="list-style-type: none"> <li>Keep some dry non-perishable food always ready for emergency use.</li> </ul>	<ul style="list-style-type: none"> <li>Do not try to walk or drive through accumulated water.</li> </ul>
<ul style="list-style-type: none"> <li>Stay indoors and take shelter in the strongest part of your house.</li> </ul>	<ul style="list-style-type: none"> <li>Do not walk across bridges as they may collapse.</li> </ul>
<ul style="list-style-type: none"> <li>Listen to the radio and follow instructions.</li> </ul>	<ul style="list-style-type: none"> <li>Never swim through fast flowing water.</li> </ul>
<ul style="list-style-type: none"> <li>Find some kind of shelter if you are caught in the open.</li> </ul>	<ul style="list-style-type: none"> <li>Do not walk through flowing waters -currents can be deceptive, and shallow, fast moving water can knock you off your feet.</li> </ul>

<ul style="list-style-type: none"> <li>• Disconnect all electrical mains and appliances and turn off gas.</li> </ul>	<ul style="list-style-type: none"> <li>• Do not swim through fast flowing waters - you may get swept away or struck by an object in the water.</li> </ul>
<ul style="list-style-type: none"> <li>• Store or secure loose boards, corrugated iron, rubbish tins or anything else that could become dangerous.</li> </ul>	<ul style="list-style-type: none"> <li>• Do not reconnect your power supply until a qualified engineer has checked it.</li> </ul>
<ul style="list-style-type: none"> <li>• Tape up large windows to prevent from shattering.</li> </ul>	<ul style="list-style-type: none"> <li>• Do not smoke or use candles, lanterns, or open flames.</li> </ul>
<ul style="list-style-type: none"> <li>• Believe in the official information and ignore rumours.</li> </ul>	<ul style="list-style-type: none"> <li>• Do not worry about your property too much; it is your life that is more important.</li> </ul>
<ul style="list-style-type: none"> <li>• When a cyclone alert is on for your area, continue normal working, but listen to the radio warnings.</li> </ul>	<ul style="list-style-type: none"> <li>• Do not return until advised, after evacuation.</li> </ul>
<ul style="list-style-type: none"> <li>• Stay alert. Remember that a cyclone When your area is under cyclone warning get away from low-lying beaches or other low-lying areas close to the coast.</li> </ul>	<ul style="list-style-type: none"> <li>• Do not dry out buildings with mechanical dehumidifiers, as this may absorb all moisture too quickly and cause additional damage.</li> </ul>
<ul style="list-style-type: none"> <li>• Leave early before your way to high ground or shelter gets flooded.</li> </ul>	<ul style="list-style-type: none"> <li>• Do not scrub or brush mud and other deposits from materials. This may cause further damage.</li> </ul>
<ul style="list-style-type: none"> <li>• If your house is securely built on high ground take shelter in the safer part of the house.</li> </ul>	<ul style="list-style-type: none"> <li>• Do not let water-damaged papers alert means that the danger is within 24 hours.</li> </ul>
<ul style="list-style-type: none"> <li>• Board up glass windows or put storm shutters in place.</li> </ul>	<ul style="list-style-type: none"> <li>• Do not open any books or albums that were completely submerged. (Wet paper is very weak and will tear.)</li> </ul>
<ul style="list-style-type: none"> <li>• Provide strong suitable support for outside doors.</li> </ul>	<ul style="list-style-type: none"> <li>• Do not keep objects in dark, hot, stagnant air with high humidity, as these conditions encourage mold.</li> </ul>
<ul style="list-style-type: none"> <li>• If you do not have wooden boards handy, paste paper strips on glasses to prevent splinters.</li> </ul>	<ul style="list-style-type: none"> <li>• Do not try to separate bundles of saturated paper.</li> </ul>
<ul style="list-style-type: none"> <li>• Get extra food, which can be eaten without cooking. Store extra drinking water in suitably covered vessels.</li> </ul>	
<ul style="list-style-type: none"> <li>• If you are to evacuate the house, move your valuable articles to upper floors to minimize flood damage.</li> </ul>	
<ul style="list-style-type: none"> <li>• Small and loose things, which can fly in strong winds, should be stored safely in a room.</li> </ul>	
<ul style="list-style-type: none"> <li>• Be sure that a window and door can be opened only on the side opposite to the one facing the wind.</li> </ul>	
<ul style="list-style-type: none"> <li>• Make provision for children and adults requiring special diets.</li> </ul>	
<ul style="list-style-type: none"> <li>• If the centre of the cyclone is passing directly over your house, there will be a lull in the wind and rain lasting for half an hour or so. During this time do not go out; because immediately after this, very strong winds will blow from the opposite direction.</li> </ul>	



• Remain calm.	
• Wear sturdy shoes and clothing for protection. remain in wet boxes. Remove water damaged papers from wet boxes then air dry or freeze dry.	
• Collect your emergency survival kit before evacuation.	
• Move to the nearest shelter or vacate the area, if ordered by the appropriate authority.	
• Pack essentials for yourself and your family to last you a few days, including medicines, special foods for babies and children or elders.	
• At the shelter follow instructions of the person in charge.	
• Remain in the shelter until you have been informed to leave	
• You should remain in the shelter until informed that you can return to your home.	
• Get inoculation done against diseases immediately.	
• Strictly avoid coming into contact with any loose and dangling wires from the lamp posts.	
• If you are to drive, drive carefully.	
• Clear debris from your premises immediately.	
• Report the correct loss to appropriate authorities.	
<b># Drought</b>	
<b>Do's</b>	<b>Don'ts</b>
• Carry out early warning and drought monitoring on the basis of long, medium and short term forecast.	• Do not work in extreme heat anywhere.
• Arrange reasonable buffer-stock of food grain and fodder.	• Do not waste water anywhere.
• Ensure supply of good drinking water in rural area for human and livestock in drought affected areas.	• Do not leave children or cattle alone outdoors.
• Assess fodder requirement in drought affected areas and locate pockets where shortages are likely to occur and arrange supplies from outside.	• Do not depend on only agriculture based occupations.
• Encourage fodder cultivation, wherever feasible.	• Do not encourage deforestation and cutting of trees.

<ul style="list-style-type: none"> <li>• Rejuvenate traditional rainwater systems viz., Rivers, Nadis, Tankas, Khadins, etc.</li> </ul>	<ul style="list-style-type: none"> <li>• Do not follow single cropping pattern.</li> </ul>
<ul style="list-style-type: none"> <li>• Encourage rainwater harvesting for both the drinking and cropping.</li> </ul>	<ul style="list-style-type: none"> <li>• Do not grow water-intensive crops like paddy, sugar, etc., which consume a lot of water.</li> </ul>
<ul style="list-style-type: none"> <li>• Strengthen watershed management and irrigation system.</li> </ul>	<ul style="list-style-type: none"> <li>• Do not delay in providing agricultural input support like seeds and fertilizers to the farmers.</li> </ul>
<ul style="list-style-type: none"> <li>• Promote cultivation of potatoes, groundnut, oilseeds, and maize.</li> </ul>	<ul style="list-style-type: none"> <li>• Do not forget to involve community and self-help groups in drought management.</li> </ul>
<ul style="list-style-type: none"> <li>• Ensure management of human and livestock population to reduce pressure on fragile arid ecosystem.</li> </ul>	<ul style="list-style-type: none"> <li>• Do not take up new initiatives for execution without the approval of the appropriate authority.</li> </ul>
<ul style="list-style-type: none"> <li>• Encourage social forestry/Joint Forest Management.</li> </ul>	<ul style="list-style-type: none"> <li>• Do not discriminate in providing relief to the affected people.</li> </ul>
<ul style="list-style-type: none"> <li>• Ensure timely availability of credit, postponement of revenue collection, and repayment of short-term agriculture loan.</li> </ul>	<ul style="list-style-type: none"> <li>• Do not allow inclusion of the names of ineligible persons in the list for gratuitous assistance.</li> </ul>
<ul style="list-style-type: none"> <li>• Give boost to appropriate land-use planning (inter-cropping system).</li> </ul>	<ul style="list-style-type: none"> <li>• Do not procure fodder on any other price than fixed by the State Government.</li> </ul>
<ul style="list-style-type: none"> <li>• Promote implementation of crop and livestock insurance schemes.</li> </ul>	<ul style="list-style-type: none"> <li>• Do not allow hoarding and diversion of food grains from the Fair Price shops to open market.</li> </ul>
<ul style="list-style-type: none"> <li>• Consume food as per your basic requirement.</li> </ul>	<ul style="list-style-type: none"> <li>• Do not allow more than 500 cattle in each cattle camp.</li> </ul>
<ul style="list-style-type: none"> <li>• Make a habit to use water economically.</li> </ul>	<ul style="list-style-type: none"> <li>• Do not neglect inspection of the cattle camps.</li> </ul>
<ul style="list-style-type: none"> <li>• Ration food and water as per the needs of family members.</li> </ul>	
<ul style="list-style-type: none"> <li>• Take temporary shelter where water is available.</li> </ul>	
<ul style="list-style-type: none"> <li>• Provide provisions for cattle camp in drought affected area.</li> </ul>	
<ul style="list-style-type: none"> <li>• Seek alternate cropping/dry land farming.</li> </ul>	
<ul style="list-style-type: none"> <li>• Create Disaster Task Force in the concerned area to initiate relief measures immediately after the drought occurrence.</li> </ul>	
<ul style="list-style-type: none"> <li>• Train teams for drought damage assessment.</li> </ul>	
<ul style="list-style-type: none"> <li>• Do not delay in preparing agro-advisory bulletins based on crop contingency plans, and their wide dissemination among the farmers.</li> </ul>	
<ul style="list-style-type: none"> <li>• Contact the nearest Agriculture Office.</li> </ul>	
<ul style="list-style-type: none"> <li>• Involve Gram Sabha members in preventing spread of epidemics and infectious diseases.</li> </ul>	
<b># Earthquake</b>	
<b>Do's</b>	<b>Don'ts</b>
<ul style="list-style-type: none"> <li>• Repair deep plaster cracks in ceilings and foundations.</li> </ul>	<ul style="list-style-type: none"> <li>• Do not rent apartments in high rise multistoried buildings, without any earthquake proof</li> </ul>



	certification or in houses in a narrow street.
• Get expert advice if there are signs of structural defects.	• Do not rent houses adjacent to weakly constructed vulnerable old houses or any other weak structure, which can fall on your house during earthquake.
• Anchor overhead lighting fixtures to the ceiling.	• Do not rush to the doors or exits.
• Consult structural engineers for earthquake safety before constructing, buying or renting a house.	• Do not use the elevators.
• Follow Bureau of Indian Standards (BIS) codes relevant to your area for building standards.	• Do not go close to broken windows, mirrors, chimneys and furniture.
• Fasten shelves securely to walls.	• Avoid places where there are loose electric wires and do not touch any metal object in contact with them.
• Place large or heavy objects on lower shelves.	• Do not re-enter badly damaged buildings and don't go near damaged structures.
• Store breakable items such as bottled foods, glass, and bone china in low, closed cabinets with latches.	• Be aware that some earthquakes are actually foreshocks and a larger earthquake might occur. Do not move to unsafe places.
• Brace overhead light and fan fixtures.	• Do not come near the buildings, trees, streetlights, and utility wires.
• Repair defective electrical wiring and leaky gas connections. These are potential fire risks. Secure a water heater, LPG cylinder etc., by strapping it to the wall studs and bolting it to the floor.	• Do not enter the building until the shaking stops. The greatest danger exists directly outside buildings, at exits, and alongside exterior walls. Most earthquake-related casualties result from collapsing walls, flying glass, and falling objects.
• Store weed killers, pesticides, and flammable products securely in closed cabinets with latches and on bottom shelves.	• Do not use roads, bridges, or ramps that might have been damaged by the earthquake.
• Identify safe places indoors and outdoors.	• Do not light a match; move about or kick up dust; open your mouth
• Educate yourself and family members.	
• Be aware of the emergency telephone numbers (doctor, hospital, police, etc).	
• Keep away from old, tall or detached buildings, electricity wires, slopes and walls, which are liable to collapse.	
• Stop the vehicle away from buildings, walls, slopes, electricity wires and cables.	
• Leave your badly damaged house immediately.	
• Collect your emergency kit or water containers, food items and general and special medicines (especially for persons with heart complaints, diabetes, etc.).	
• Have a disaster emergency kit ready.	
• Develop an emergency communication plan.	
<b>If Indoors</b>	

<ul style="list-style-type: none"> <li>• DROP to the ground; take COVER by getting under a sturdy table or other piece of furniture; and HOLD ON until the shaking stops. If there isn't a table or desk near you, cover your face and head with your arms and crouch in an inside corner of the building.</li> </ul>	<ul style="list-style-type: none"> <li>• Do not turn on the water, gas and electricity.</li> </ul>
<ul style="list-style-type: none"> <li>• Protect yourself by staying under the lintel of an inner door, in the corner of a room, under a table or even under a bed.</li> </ul>	<ul style="list-style-type: none"> <li>• Do not turn on switches. There may be gas leaks or short-circuits.</li> </ul>
<ul style="list-style-type: none"> <li>• Stay away from glass, windows, outside doors and walls, and anything that could fall, such as lighting fixtures or furniture.</li> </ul>	<ul style="list-style-type: none"> <li>• Do not smoke and do not light matches or use a cigarette lighter.</li> </ul>
<ul style="list-style-type: none"> <li>• Stay in bed if you are there when the earthquake strikes. Hold on and protect your head with a pillow, unless you are under a heavy light fixture that could fall. In that case, move to the nearest safe place. without using a handkerchief or clothing; shout as it can cause you to inhale dangerous amounts of dust, if trapped under debris.</li> </ul>	<ul style="list-style-type: none"> <li>• Do not try to put out a fire, if you cannot, call the fire brigade.</li> </ul>
<ul style="list-style-type: none"> <li>• Use a doorway for shelter only if it is in close proximity to you and if you know it is a strongly supported, load bearing doorway.</li> </ul>	<ul style="list-style-type: none"> <li>• Do not move seriously injured people, unless they are in danger.</li> </ul>
<ul style="list-style-type: none"> <li>• Stay inside until the shaking stops and it is safe to go outside. Research has shown that most injuries occur when people inside buildings attempt to move to a different location inside the building or try to leave.</li> </ul>	<ul style="list-style-type: none"> <li>• Do not rush and worsen the situation of injured persons or your own situation. If you know that people have been buried, do not hesitate to tell the rescue teams.</li> </ul>
	<ul style="list-style-type: none"> <li>• Do not drink water from open containers without having examined it and filtered it through a sieve, a filter or an ordinary clean cloth.</li> </ul>
<b>If Outdoors</b>	
<ul style="list-style-type: none"> <li>• Stay wherever you are.</li> </ul>	
<ul style="list-style-type: none"> <li>• Move away from buildings, trees, streetlights, and utility wires.</li> </ul>	
<ul style="list-style-type: none"> <li>• Once in the open, stay there until the shaking stops. The greatest danger exists directly outside buildings, at exits, and alongside exterior walls. Most earthquake-related casualties result from collapsing walls, flying glass, and falling objects.</li> </ul>	
<b>If in a Moving Vehicle</b>	
<ul style="list-style-type: none"> <li>• Stop as quickly as safety permits and stay in the vehicle. Avoid stopping near or under buildings, trees, overpasses, and utility wires.</li> </ul>	
<ul style="list-style-type: none"> <li>• Proceed cautiously once the earthquake has stopped.</li> </ul>	



# Fire Buildings: Offices and Residences	
Do's	Don'ts
• Install smoke alarms.	• Do not loose calm.
• Place smoke alarms on every level in the building.	• Do not paint over smoke/heat detectors.
• Test and clean smoke alarms once a month and replace batteries at least once a year.	• Do not let trash, such as old newspapers and magazines, etc., accumulate.
• Replace smoke alarms once every 10 years.	• Do not smoke near flammable liquids.
• Review escapes routes with your family.	• Do not smoke in bed or when drowsy or medicated.
• Make sure windows are not nailed or permanently shut.	• Do not overload extension cords or outlets, if you need to plug in two or three appliances.
• Consider escape ladders if your building has more than one level, and ensure that burglar bars and other anti theft mechanisms that block outside window entry are easily opened from the inside.	• Do not leave electrical appliances or equipment continued to be energized when they are not in use, especially after office/working hours.
• Clean out storage areas. Never use gasoline, benzene, naphtha, or similar flammable liquids indoors.	• Do not put liquid or thing that is flammable or combustibile near an electrical switchboard or an enclosure containing electrical components.
• Store flammable liquids in approved containers in well-ventilated storage areas.	• Do not touch bare electrical wiring.
• Be careful when using alternative heating sources.	• Do not enter a damaged building, if you detect heat or smoke.
• Place heaters at least three feet away from flammable materials. Make sure the floor and nearby walls are properly insulated.	• Do not try to open a safe or strong box as it could hold intense heat for several hours.
• Keep matches and lighters up high, away from children, and, if possible, in a locked cabinet.	• Do not use cardboard boxes, wooden crates or other receptacles that are made of combustibile material as makeshift rubbish bins at your place.
• Have the electrical wiring in your building checked by an electrician.	• Do not accumulate unwanted items at your place.
• Inspect extension cords for frayed or exposed wires or loose plugs.	• Do not use corridors, walkways or passageways that form part of the emergency escape route at your place.
• Make sure outlets have cover plates and no exposed wiring.	• Do not remove ceiling boards or use ceiling voids for storage.
• Escape through a window, if door is hot. If you cannot escape, hang a white or light-colored sheet outside the window, alerting fire fighters to your presence.	• Do not use fragile containers to store flammable liquids.
• Open the door slowly and ensure fire and/or smoke is not blocking your escape route.	• Do not use or operate dirty or greasy equipment/machinery.
• Crawl hugging to ground to save from inhaling smoke while escaping through building on fire.	• Do not leave heavy machinery operating or running unattended.
	• Do not run through the smoke. People die more by inhaling smoke than from fire.

# Heat Wave	
Do's	Don'ts
• Drink 2 to 3 litres of water per day or sufficient water, as often as possible, even if not thirsty.	• Do not go out in the hot sun, especially between 12 noon to 3 p.m.
• Wear lightweight, light-coloured, loose, porous natural fibre clothes.	• Do not undertake strenuous activities; avoid work outside during 12 noon to 3 p.m.
• While traveling, carry water with you.	• Do not consume alcoholic, caffeinated or carbonated drinks, which dehydrate the body.
• If you work outside, keep hat and clothing damp.	• Do not eat high-protein foods, which increase metabolic heat.
• Use umbrella, sunscreen as sun burn limits your ability to cope up with heat.	• Do not leave children or pets in parked vehicles.
• If you suffer chronic illness or feel ill, see a doctor.	• Do not come directly in touch with sunlight.
• Use ORS, home made indigenous drinks like lassi, torani (rice water), lemon sharbat (lemon water), butter milk, etc., which help to rehydrate the body, and protect us from sunstroke.	
• Keep animals in the shade with plenty of water.	
• Keep your home cool with curtain, shutters or awnings on the sunny side and open windows at night.	
• Use fans, damp clothing and have frequent cool showers.	
• When a person is affected by heat wave, ensure the person lies down in a cool place; wipe her/him with a wet cloth/wash the body frequently.	
• Pour normal water on the head of the affected person to bring down the body temperature.	
• Use an icepack on the head of the affected person.	

This Disaster Management Plan 2016-17 has been made from in-service experience and literatures collected from various sources and should be thoroughly checked and modified by any addition and alteration if found applicable by Specialists and due acceptance from our administrative department of WRIDD is required.